



# Thomas County KS

## Community Health Needs Assessment

---



**May 2012**

**VVV Research & Development INC.  
Olathe, KS**

# Community Health Needs Assessment

## Table of Contents

### I Executive Summary

### II Methodology

- a) CHNA Scope & Purpose
- b) Local Collaborating CHNA parties...the identity of any and all organizations with which the organization collaborated and third parties that engaged to assist with the CHNA.
- c) CHNA & Town Hall Research Process... a description of the process & methods used to conduct the CHNA, a description of how the organization considered the input of persons representing the community, and an explanation of the process/criteria used in prioritizing such needs.
- d) Community Profile (Demographics/Economics)... a description of the community served by the facility and how the community was determined. TABS 1-2

### III Community Health Status

- a) Town Hall CHNA Findings: Areas of Strengths & Areas to Change and/or Improve.”
- b) County Health Area of Future Focus... a prioritized description of all of the community needs identified by the CHNA.
- c) Historical Health Statistics – TAB 3-10

### IV Inventory of Existing County Health Resources

- a) Physician Manpower, Health Service Offerings, Detail Inventory of HC providers and Detail Listing local DOH.... a description of the existing health care facilities and other resources within the community available to meet the needs identified through the CHNA.

### V Detail Exhibits

- a) Patient Origin & Access to Care
- b) Town Hall Attendees, Notes & Feedback... who those persons are (with qualifications)
- c) Public Notice & News
- d) Primary Research Detail *Shaded lines note IRS requirements*

# **I. Executive Summary**

---

**[VVV Research & Development INC]**

## I. Executive Summary

The following report is the Community Needs Health Assessment for **Thomas County, KS** for 2012. Creating healthy communities requires a high level of mutual understanding and collaboration with community individuals and partner groups. The development of this assessment brings together community health leaders and providers along with local residents to research and prioritize county health needs and to document community health delivery successes. This health assessment will serve as the foundation for community health improvement efforts for the next three years.

The 2012 Community Health Needs Assessment (CHNA) brings together a variety of health status information. This assessment was coordinated and produced by VVV Research & Development INC from Olathe, KS under the direction of Vince Vandehaar, MBA. Important CHNA benefits for the sponsoring local hospital and health department, as well as for the community, are as follows: 1) Increases knowledge of community health needs and resources, 2) Creates a common understanding of the priorities of the community's health needs, 3) Enhances relationships and mutual understanding between and among stakeholders, 4) Provides a basis upon which community stakeholders can make decisions about how they can contribute to improving the health of the community, 5) Provides rationale for current and potential funders to support efforts to improve the health of the community, 6) Creates opportunities for collaboration in delivery of services to the community and 7) Provides guidance to the hospital and local health department for how it can align its services and community benefit programs to best meet needs.

The Patient Protection and Affordable Care Act (ACA) requires all non-profit hospitals to conduct a community health needs assessment (CHNA) every three years and adopt an implementation strategy to meet the needs identified by the CHNA.

### **Health Priorities:**

2012 Health Needs - Thomas County KS (Ranked)			
#	Health Areas of Future Focus N=33	Counts	%
1	Mental Health (Awareness of Providers / Funding)	22	17%
2	Obesity (#)	17	13%
3	Specialty Services (Chemo, Radiation, Dialysis, Surgery)	16	12%
4	Uninsured (#)	16	12%
5	Dentists (That Accept Medicaid)	14	11%
6	Need additional Home Health services	13	10%
7	Teen Pregnancy	9	7%
8	Transportation (HC)	6	5%
9	Chronic Disease	6	5%
10	Social Services - funding cuts	6	5%
TOTAL		125	100%



### **Key Community Health Needs Assessment Conclusions (Secondary Research)**

- KS HEALTH RANKINGS: According to 2012 RWJ County Health Rankings study, Thomas County's highest State of KS ranking (of 100 counties) was in Health Behaviors - Tobacco Use, Diet/Exercise, Alcohol Use, and Sexual Activity (18<sup>th</sup>) with Social Economic factors ranked 19<sup>th</sup>. Thomas's lowest ranking was in Mortality-Length of Life (77<sup>th</sup>).
- TAB 1: Thomas County has a high percentage of people living below the poverty level and people over 65 living below the poverty level. Voter turnout for county is slightly lower (reflects community involvement).
- TAB 2: Home ownership percentage and per capita income are lower in Thomas County. The number of children in poverty is low.
- TAB 3: Active school health/wellness activities occurring. However, the poverty status by school enrollment is high.
- TAB 4: Thomas County has a low percentage of premature babies and high percentage of mothers who initiate breastfeeding. However, there are higher rates of teen pregnancy and the percentage of mothers who receive prenatal care could be higher.
- TAB 5: High COPD and pneumonia rates. Total hospital discharges have decreased, however surgical percentage has increased. Preventable hospital stays are slightly higher in Thomas County.
- TAB 6: Financially the county has increased spending on mental health services, temporary assistance for families, and food assistance.
- TAB 7: Age adjusted years of life lost are high for diabetes, traffic incidents, and suicide but low for heart disease and cancer. Also, the risk for lead in housing is low. Adult obesity is slightly higher, but the number of STD cases is low.
- TAB 8: Thomas has a slightly higher rate of unemployment, but not as high as other counties. Hospital charity care is high and has increased since 2009.
- TAB 9: Mortality rates are high for chronic respiratory disease and suicide, also cancer, diabetes, and Alzheimer's mortality rates are of concern. Premature death is higher in Thomas County (correlated to suicide rates).
- TAB 10: Thomas County does not have as high of a success rate with fully immunizing children less than 24 months. However the county does have a high percentage of diabetic screenings.

## **II. Methodology**

---

**[VVV Research & Development INC]**

## II. Methodology

### a. Scope and Purpose

The new federal Patient Protection and Affordable Care Act requires that each registered 501(c)3 hospital conduct a Community Health Needs Assessment (CHNA) at least once every three years and adopt a strategy to meet community health needs. Any hospital who has filed a 990 will be required to conduct a CHNA. IRS Notice 2011-52 was released in late fall of 2011 to give notice and request comments.

#### **JOB #1: Meet/Report IRS 990 Required Documentation**

1. A description of the process and methods used to conduct the CHNA;
2. The identity of any and all organizations which the organization collaborated with and third parties that it engaged to assist with the CHNA;
3. A description of how the organization considered the input of persons representing the community (*e.g., through meetings, focus groups, interviews, etc.*), who those persons are, and their qualifications;
4. A prioritized description of all the community needs identified by the CHNA and an explanation of the process and criteria used in prioritizing such needs;
5. A description of the existing health care facilities and other resources within the community available to meet the needs identified through the CHNA; and
6. A prioritized description of all the community needs identified by the CHNA and an explanation of the process and criteria used in prioritizing.

Section 501(r) provides that a CHNA must take into account input from persons who represent the broad interests of the community served by the hospital facility, including individuals with special knowledge of or expertise in public health. Under the Notice, the persons consulted must also include

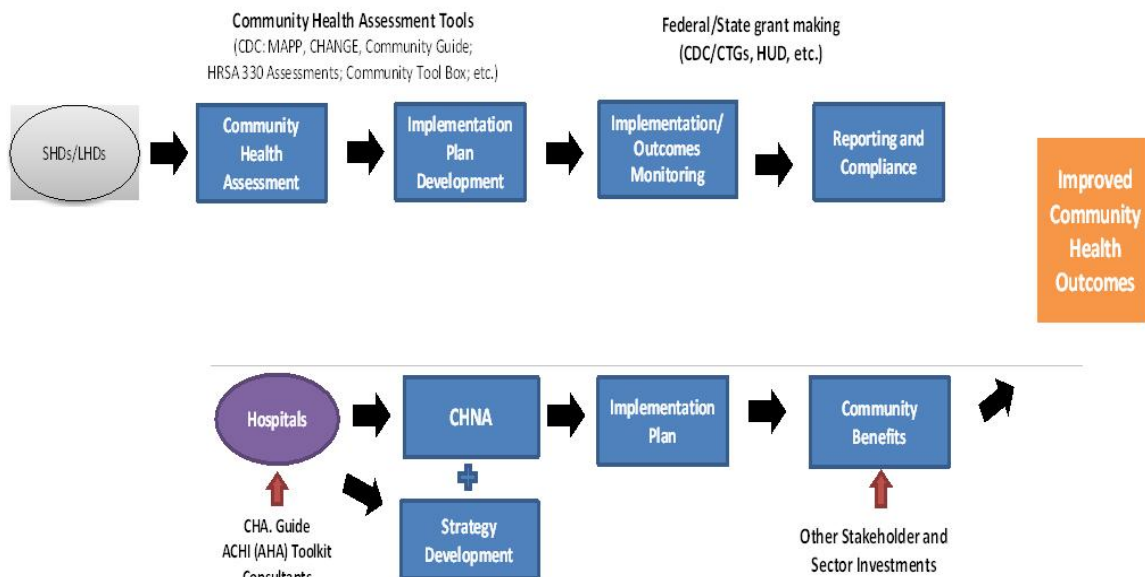
- a. Government agencies with current information relevant to the health needs of the community and
- b. Representatives or members in the community that are medically underserved, low-income, minority populations, and populations with chronic disease needs. In addition, a hospital organization may seek input from other individuals and organizations located in or serving the hospital facility's defined community (*e.g., health care consumer advocates, academic experts, private businesses, health insurance and managed care organizations, etc.*).

**JOB #2: Making a CHNA Widely Available to the Public** The Notice provides that a CHNA will be considered to be "conducted" in the taxable year that the written report of the CHNA findings is made widely available to the public. The Notice also indicates that the IRS intends to pattern its rules for making a CHNA "widely available to the public" after the rules currently in effect for Forms 990. Accordingly, an organization would make a facility's written report widely available by posting the final report on its website either in the form of (1) the report itself, in a readily accessible format, or (2) a link to another organization's website, along with instructions for accessing the report on that website.

*The Notice clarifies that an organization must post the CHNA for each facility until the date on which its subsequent CHNA for that facility is posted.*

**JOB #3: Adopt an Implementation Strategy (Hospital)** Section 501(r) requires a hospital organization to adopt an implementation strategy to meet the needs identified through each CHNA. The Notice defines an “implementation strategy” as a written plan that addresses each of the needs identified in a CHNA by either (1) describing how the facility plans to meet the health need, or (2) identifying the health need as one that the facility does not intend to meet and explaining why the facility does not intend to meet it. A hospital organization may develop an implementation strategy in collaboration with other organizations, which must be identified in the implementation strategy. As with the CHNA, a hospital organization that operates multiple hospital facilities must have a separate written implementation strategy for each of its facilities.

Great emphasis has been given to work hand-in-hand with leaders from both hospitals and the local county health department. As seen below a comprehensive Community Health Needs Assessment is required by both to “improve community health outcomes.” A common approach has been adopted to create the CHNA, leading to aligned implementation plans and community reporting.



## a2\_Community Health Needs Assessment

### Notice and Request for Comments Regarding the Community Health Needs Assessment Requirements for Tax-exempt Hospitals

IRS Notice 2011-52

#### **EXECUTIVE OVERVIEW**

#### **Applicability of CHNA Requirements to “Hospital Organizations”**

The CHNA requirements apply to “**hospital organizations**,” which are defined in Section 501(r) to include (1) organizations that operate one or more state-licensed hospital facilities, and (2) any other organization that the Treasury Secretary determines is providing hospital care as its principal function or basis for exemption.

#### **How and When to Conduct a CHNA**

Under Section 501(r), a hospital organization is required to conduct a CHNA for each of its hospital facilities once every three taxable years. *The CHNA must take into account input from persons representing the community served by the hospital facility and must be made widely available to the public.* The CHNA requirements are effective for taxable years beginning after March 23, 2012. As a result, a hospital organization with a June 30 fiscal year end must conduct an initial CHNA for each of its hospital facilities by June 30, 2013, either during the fiscal year ending June 30, 2013 or during either of the two previous fiscal years.

#### **Determining the Community Served**

A CHNA must identify and assess the health needs of the **community served** by the hospital facility. Although the Notice suggests that geographic location should be the primary basis for defining the community served, it provides that the organization may also take into account the target populations served by the facility (e.g., children, women, or the aged) and/or the facility’s principal functions (e.g., specialty area or targeted disease). *A hospital organization, however, will not be permitted to define the community served in a way that would effectively circumvent the CHNA requirements (e.g., by excluding medically underserved populations, low-income persons, minority groups, or those with chronic disease needs).*

#### **Persons Representing the Community Served**

Section 501(r) provides that a CHNA must take into account input from **persons who represent the broad interests of the community** served by the hospital facility, including individuals with special knowledge of or expertise in public health. Under the Notice, the persons consulted must also include:

- (1) government agencies with current information relevant to the health needs of the community and
- (2) representatives or members of medically underserved, low-income, and minority populations, and populations with chronic disease needs, in the community. In addition, a hospital organization may seek input from other individuals and organizations located in or serving the hospital facility’s defined community (e.g., health care consumer advocates, academic experts, private businesses, health insurance and managed care organizations, etc.).

**Required Documentation** The Notice provides that a hospital organization will be required to separately document the CHNA for each of its hospital facilities in a **written report** that includes

the following information: 1) a description of the community served by the facility and how the community was determined; 2) a description of the process and methods used to conduct the CHNA; 3) the identity of any and all organizations with which the organization collaborated and third parties that it engaged to assist with the CHNA; 4) a description of how the organization considered the input of persons representing the community (e.g., through meetings, focus groups, interviews, etc.), who those persons are, and their qualifications;

5) a prioritized description of all of the community needs identified by the CHNA and an explanation of the process and criteria used in prioritizing such needs; and 6) a description of the existing health care facilities and other resources within the community available to meet the needs identified through the CHNA.

### ***Making a CHNA Widely Available to the Public***

The Notice provides that a CHNA will be considered to be “**conducted**” in the taxable year that the written report of the CHNA findings is made **widely available to the public**. The Notice also indicates that the IRS intends to pattern its rules for making a CHNA “widely available to the public” after the rules currently in effect for Forms 990. *Accordingly, an organization would make a facility’s written report widely available by posting on its website either (1) the report itself, in a readily accessible format, or (2) a link to another organization’s website, along with instructions for accessing the report on that website. The Notice clarifies that an organization must post the CHNA for each facility until the date on which its subsequent CHNA for that facility is posted.*

### **How and When to Adopt an Implementation Strategy**

Section 501(r) requires a hospital organization to adopt an implementation strategy to meet the needs identified through each CHNA. **The Notice defines an “implementation strategy” as a written plan that addresses each of the needs identified in a CHNA by either (1) describing how the facility plans to meet the health need, or (2) identifying the health need as one that the facility does not intend to meet and explaining why the facility does not intend to meet it.** A hospital organization may develop an implementation strategy in collaboration with other organizations, which must be identified in the implementation strategy. As with the CHNA, a hospital organization that operates multiple hospital facilities must have a separate written implementation strategy for each of its facilities.

Under the Notice, an implementation strategy is considered to be “adopted” on the date the strategy is approved by the organization’s board of directors or by a committee of the board or other parties legally authorized by the board to act on its behalf. Further, the formal adoption of the implementation strategy must occur by the end of the same taxable year in which the written report of the CHNA findings was made available to the public. For hospital organizations with a June 30 fiscal year end, that effectively means that the organization must complete and appropriately post its first CHNA no later than its fiscal year ending June 30, 2013, and formally adopt a related implementation strategy by the end of the same tax year. *This final requirement may come as a surprise to many charitable hospitals, considering Section 501(r) contains no deadline for the adoption of the implementation strategy.*

## **II Methodology**

### **b) Collaborating CHNA parties**

Working together to improve community health takes collaboration. Listed below is an in depth profile of the local hospital & Health Department CHNA partners:

#### **Citizens Medical Center Profile**

**100 E. College Dr., Colby, KS, 67701**

**Chief Executive Officer: Kevan Trenkle**

**History:** Citizens Medical Center, Inc. – Thomas County was established in 1979 and incorporated in Kansas. The facility is a financially sound hospital that is not on the public tax rolls. The facility recently acquired a new 16-slice CT scanner. 35 physicians visit the facility on a regular basis to serve the medical needs of the community. Presently, Citizens Medical Center is a private, not-for-profit critical access hospital with 25 beds and emergency services.

**Mission Statement:** Our Mission at Citizens Medical Center, Inc. is in “Providing compassionate care that promotes dignity and well-being.”

**Vision:** CMCI has a vision to maintain a commitment to provide cutting edge healthcare.

**Citizens Medical Center offers** the following services to its community:

- Inpatient Medical Surgical Services
- Pediatric
- Obstetrics – Birthing and Post Partum Rooms, Nursery
- Medical Surgical Specialty Care
- Swing Bed Services
- Intermediate Nursing Care
- Alzheimer’s Special Care
- Chemotherapy Services
- Emergency Department
- Community Health Education
- Hospital-Based Outpatient Services
- Specialty Clinic Consultants
- Outpatient Rehabilitation Services (Physical, Occupational, and Speech Therapies)
- Radiology – Diagnostic
  - X-Ray, Flouroscopy Studies, MRI/MRA, Nuclear Medicine Studies, Ultrasound, CT Scanner, Digital Mammography, Bone Density Studies, Spect/CT Scanner
- Rural Health Clinic
- Social Work Services
- Cardiopulmonary Services
  - Cardiac Rehabilitation, Holter Monitoring, Stress Testing, EKGs, Oxygen and Heliox Therapy, IPV, Pulmonary Function Testing
- Laboratory
  - Drug Testing, Micro Biology Studies, Blood Bank, Direct Access Testing
- Surgical – Inpatient and Outpatient Surgeries
- Pharmacy Services

**Statistics and Staff:** It was reported in fiscal year 2011 that the facility had 724 admissions, 11,951 outpatient visits, 103 inpatient surgeries, and 2,413 Emergency room visits. Citizens Medical Center, Inc. has approximately 260 employees.

Citizens Medical Center, Inc. (CMCI) works closely with its affiliates, Prairie Senior Living Complex and Family Center for Health Care, as well as other community partners to identify the needs of the citizens, as defined by the citizens themselves and the organizations that address these concerns. Thomas County, compared to the surrounding counties (that also have residents who access healthcare locally), is one of the more densely populated counties in the northwest Kansas region.

## **Thomas County Health Department Profile**

**350 S. Range Ave., Ste. #2, Colby, KS, 67701**  
**Administrator: Kasiah Rothchild**

The Thomas County Health Department is open Monday through Friday from 8:00 am to 5:00 pm. Thomas County Health Department also has the Breastfeeding Boutique that offers breastfeeding supplies (bras, breast pumps, Bellaband, Maya wraps, milk storage, pillows, bracelets, and other baby items) for rent and purchase. The goal is to enhance mother's breastfeeding experience. In 2011 the Health Department offered a seasonal Flu Clinic to provide the vaccination in either injection or flu mist forms. The health department also offers WIC services through the Sherman County Health Department.

**Offerings:** Immunizations, TB skin tests, physicals (school, daycare), KAN Be Healthy Physical, lab work, RN & APRN Physicals, birth control, pregnancy tests, HIV/STD testing, and lactation classes.

Programs Immunizations, Public Health Preparedness, Maternal and Infant Program, Chronic Disease Risk Reduction, Family Planning.

Screenings: Hearing, vision, and pap smears.

**Mission:** To provide health services, environmental services and educational services to maintain and promote a health lifestyle for every individual in our community.

**Accreditation:** Thomas County Health Department is moving toward its accreditation through PHAB.

---

### **Thomas County Health Department**

350 S Range Avenue, Suite 2

Colby, KS 67701-2901

**Phone:** 785-460-4596

**FAX:** 785-460-4595

**E-mail:** [findir@thomascohealth.com](mailto:findir@thomascohealth.com)

### **Administrator:**

Kasiah Rothchild

### **Health Officer/Medical Consultant:**

J. Steven Bear, MD



## Sec II

### b2\_Consultant Qualifications



#### **VWV Research & Development, Inc.**

Company Profile: 601 N. Mahaffie, Olathe, KS 66061-6431 (913) 302-7264

#### **VINCE VANDEHAAR, MBA**

##### **Principal Consultant & Owner of VWV Research & Development, Inc.**

VWV Research & Development, Inc. was incorporated on May 28<sup>th</sup> 2009. With over 30 years of business & faculty experience in helping both providers, payors, and financial service firms obtain their strategic planning, research & development needs, Vince brings in-depth health industry knowledge, research aptitude, planning expertise, and energy. VWV Research & Development services are organized, formal processes of listening to the voice of the customer. Vince started his consulting business in May of 2009, after working for Saint Luke's Health System (SLHS) of Kansas City for 16 years. Note: Saint Luke's Hospital of Kansas City, SLHS's largest hospital, won the Malcolm Baldrige National Quality Award in March of 2003. The Baldrige examiners cited Vince's department as "Best Practice" in the areas of customer satisfaction, market research, and evaluation efforts (Kansas City Star 3/10/04).

**VWV Research & Development, INC. (Olathe, KS)** consultants have in-depth experience helping hospitals work with local Health Departments to engage community residents & leaders to identify gaps between existing health community resources & needs, and construct detailed strategies to meet those needs - while still adhering to the hospital's mission and budget. Over the past 20 years, Vandehaar has completed 8 comprehensive Baldrige aligned Community Health Needs Assessments for Saint Luke's of Kansas City System facilities (3 campuses) and was contracted to conduct 2 additional independent Dept. of Health consulting projects (prior to IRS 990 regs). Currently in 2012, VWV has 12 CHNA IRS aligned assessments underway for Kansas hospitals & Health Departments.

Vince Vandehaar, MBA is actively involved in the Kansas City community. He is a member the Greater Kansas City Employee Benefits Association, the Society for Healthcare Strategy & Market Development, the American Marketing Association Kansas City Chapter, and Co-Chair of the AMA Kansas City Healthcare Special Interest Group. In addition to these roles, from 2000 to 2008, Vince served as the state chairman for MHA's Data Committee and was a member of KHA's Data Taskforce.

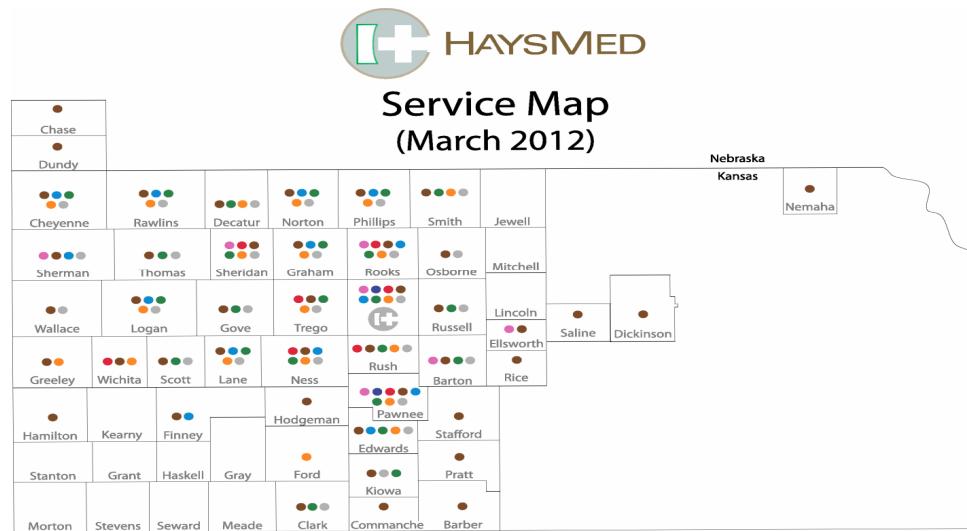
#### **Collaborating Consultants**

Megan Carollo, MBA - VWV Research & Development, Inc.  
Lead Project Coordinator & Planning Analyst

## II. Methodology

### c) CHNA & Town Hall Research Process

Our Community Health Needs Assessment process began in the fall of 2011. At that time an inquiry by Hays Medical Center (Hays, KS) to all Northwest Kansas Health Alliance member hospitals was communicated to explore the possibility of a “group buy” to meet IRS CHNA requirements. (Note: Most NW KS Alliance Network hospitals work closely with Hays Medical Center (see map below) to provide onsite IT, Telemedicine, Mobile Radiology, Bio-Medical services. In addition, many Hays based specialists will travel to neighboring counties to provide visiting outreach clinics.)



In late November of 2011 a meeting was called (hosted) by Hays Medical to learn more from the Northwest Kansas Health Alliance members (24) regarding their CHNA needs and to review the possible CHNA collaborative options. VVV Research & Development INC. from Olathe, KS was asked to facilitate this discussion with the following agenda: VVV Research CHNA experience, review CHNA requirements (regulations), discuss CHNA steps/options to meet IRS requirements, and to discuss the next steps.

#### **VVV CHNA Deliverables:**

- Uncover/Document Basic Secondary Research – Health of County. Organized by 10 TABS.
- Conduct Town Hall Meeting to discuss Secondary data and uncover/prioritize County Health Needs
- Conduct & Report Primary Research (valid N) - if elected by client.
- Prepare & Publish IRS aligned CHNA report to meet requirements

# VVV Alliance CHNA Hospital Work Plan

## Project Timeline & Roles 2012

Step	Date (Start-Finish)	LEAD	Task
1	THURS 12/29/2011	VVV / Alliance	Hold Kickoff Conference call (9 hospitals).
2	Due by 1/5/12	VVV	Buy Household 4 counties PO box file 5,600 names.
3	Due by Mon 1/9	VVV	Prepare Draft Paper/online CHNA survey. Send out online link Mon 1/9 for review.
4	Due by Mon 1/9	VVV	Finalize CHNA Basic Info categories on Basic_CHNAInfo_HospXXX.xls
5	Due by Friday 1/13/12. Send xls to VVV	All CHNA Hospitals (10)	Create Name/Address file of CHNA local participants (one per hospital) Determine interest level of area healthcare leaders.
6	Due by Friday 1/13/12. Send xls to VVV	All CHNA Hospitals (10)	Find KHA CD's. Send copy of Hospital report (documentation patient draw PSA) 2010 IP/OP reports PO101E, PO202E, PO103zip, OP TOT223E.
7	Friday 1/13/12	VVV / Alliance	Hold 2nd Conference call (4 Basic Plus hospitals ONLY) Review and update paper/online survey.
8	Friday 1/13/12	VVV / Alliance	Prepare/send out PR story to local media announcing upcoming Town Halls plus survey (4).
9	Due by Friday 1/27/12	VVV	Prepare 10 unique files of Basic_CHNAInfo_HospXXX. Start to collect Community Resource data.
10	Friday 1/27 & Monday 1/30	VVV / Alliance	Call EACH CHNA hospitals (9). Review Secondary Health Info Data items for your PSA. Call times TBD.
11	Surveys Out 1/16 - Due back by Friday FEB 10th CUTOFF	VVV	FIELD WORK 4 CHNA Basic plus hospitals: Mail CHNA Primary Research (Paper survey with online link) to PSA residents. Send 5600 - want 1,400 returns.
12	Friday 1/30/12 (2 weeks prior to meeting)	All CHNA Hospitals (10)	Prepare/send out Community TOWN HALL invitees to REQUIRED local list (Each hospital will use your data file and use VVV letter on your letterhead).
13	Mon 2/13 11:30-1pm, Mon 2/13 Dinner 5:30-7pm, Tues 2/14 Breakfast 7:30-9am & Tues 2/14 Lunch 11:30-1pm.	VVV / Alliance	TRIP #1 Town Halls. Visit, in order: (1) Norton County MON 2/13 - Lunch (2) Phillipsburg County MON 2/13 - Dinner and (3) Quinter County TUES 2/14- Breakfast. Conduct Community Roundtables - Review Basic CHNA info RANK priorities.
14	Mon 2/20 11:30-1pm, Mon 2/20 Dinner 5:30-7pm & Tues 2/21 Coffee 9-10:30am	VVV / Alliance	TRIP #2 Town Halls: Visit, in order:(1) Pawnee Valley MON 2/20 - Lunch (2) Clara Barton MON 2/20 - Dinner (3) Kiowa County Memorial TUES 2/21- Coffee 9am. Conduct Community Roundtables - Review Basic CHNA info RANK priorities.
15	Mon 3/5 Breakfast 7:30-9am, Lunch 11:30-1pm, Mon 3/5 Dinner 5:30-7pm & Tues 3/6 Breakfast 7:30-9am and Lunch 11:30-1pm.	VVV / Alliance	TRIP #3 Town Halls: Visit, in order: (1) Decatur County Mon3/5 Breakfast, (2) Colby County MON 3/5 - Lunch (3) WaKeeney County MON 3/5 - Dinner (4) Hays County TUES 3/6 - Breakfast/Lunch. Conduct Community Roundtables - Review Basic plus CHNA info RANK priorities.
16	On or before 4/20/12	VVV	Complete Analysis - Release Draft 1- seek feedback from County Leaders (Hospital & Health Dept.)
17	On or before 5/15/12	VVV	Produce & Release 9 CHNA reports (per community) Post online 9 CHNA.
18	After 5/15/12	All CHNA Hospitals (10)	Hold Board Meetings discuss CHNA needs, adopt an implementation strategy and communicate YOUR plan.

To meet IRS aligned CHNA requirements, a *four-phase methodology* was reviewed and approved as follows:

**Phase I – Discovery:** Conduct a 30 minute conference call with each CHNA hospital client and County Health Department. Review and confirm CHNA calendar of events. Explain and coach client to complete required participant database. In addition, schedule and organize 2-3 two day work trips to NW KS to conduct primary research recorded in Phase II activities.

**Phase II – QUALIFY Community Need:**

A) Conduct in-depth secondary research to uncover the following historical community health status. Use KS Health Matters, a joint venture between KHA and KDHE, Vital Statistics, County Health Rankings, etc. to document “current state” of county health organized as follows:



<b>TAB 1. Demographic Profile</b>
<b>TAB 2. Economic/Business Profile</b>
<b>TAB 3. Educational Profile</b>
<b>TAB 4. Maternal and Infant Health Profile</b>
<b>TAB 5. Hospitalization / Providers Profile</b>
<b>TAB 6. Behavioral Health Profile</b>
<b>TAB 7. Risk Indicators &amp; Factors</b>
<b>TAB 8. Uninsured Profile</b>
<b>TAB 9. Mortality Profile</b>
<b>TAB 10. Preventative Quality Measures</b>

B) Conduct primary research to uncover public health needs, practices and perceptions for hospital primary service areas. Both mail/online surveys are recommended with a survey response of 250 household or more.

**Phase III – QUANTIFY Community Need:** Conduct 90 minute Town Hall meeting at each county location. Each meeting reviews the CHNA secondary data, facilitated group discussion, and conducted a group ranking activity to determine the most important community health needs.

**Phase IV - Complete data analysis & create comprehensive Community Health Needs Assessment.** Post CHNA report findings to meet IRS CHNA criteria.

After consideration of Northwest Kansas Health Alliance CHNA “group buy”, the sponsoring hospital in collaboration with local Health Department chose the CHNA Basic option with the following project schedule:

Phase I: Discovery.....	Jan 2012
Phase II: Secondary / Primary Research.....	Jan - Feb 2012
Phase III: Town Hall Meeting.....	March 5, 2012
Phase IV: Prepare / Release CHNA report.....	April-May, 2012

Detail CHNA research & development steps are as follows;

	<b>Suggested Development Steps</b>
<b>Step # 1 Commitment</b>	<b><i>Determine interest level of area healthcare leaders (Hospital, Health Dept, Schools, Churches, Physicians etc), hold community meeting.</i></b>
<b>Step # 2 Planning</b>	<b><i>Prepare brief Community Health Needs Assessment Plan</i> - list goals, objectives, purpose, outcome, roles, community involvement, etc. Hold Community Kick-off meeting.</b>
<b>Step # 3 Secondary Research</b>	<b><i>Collect &amp; Report Community Health Published Facts. Gather data health practice data from</i> published secondary research sources i.e. census, county health records, behavioral risk factors surveillance, etc.</b>
<b>Step # 4a Primary Research</b>	<b><i>Conduct Community Roundtable (Qualitative Research). Review Secondary Research (Step3) with Community Stakeholders.</i> Gather current opinions and identify health needs.</b>
<b>Step # 4b Primary Research &lt;Optional&gt;</b>	<b><i>Collect Community Opinions. (Quantitative Research).</i> Gather current opinions (Valid sample size) regarding community health needs and healthcare practices. If appropriate, conduct Physician Manpower Assessment to determine FTE Physician need by specialty.</b>
<b>Steps # 5 Reporting</b>	<b><i>Prepare/Present comprehensive Community Health Needs Assessment report (to community leaders) with Recommended Actions to improve health.</i> &lt; Note: Formal report will follow IRS Notice 2011-52 regs &gt;</b>
	VVV Research & Development INC 913 302-7264

## **Overview of Town Hall Community Priority Setting Process**

Each community has a wealth of expertise to be tapped to conduct the CHNA. For this purpose, Town Halls are the perfect forum to gather community insight. Town Hall sessions were organized to provide an objective consensus-building method of reviewing and prioritizing county health issues. All Town Hall priority-setting and scoring processes involved the input of key stakeholders in attendance.

The individuals and organizations comprising the Town Halls were critically important to the success of the CHNA. The following list outlines partners invited to Town Hall: local hospital, public health community, mental health community, community-based clinics, service providers, local residents, community leaders, opinion leaders, school leaders, business leaders, local government, faith-based organizations and persons (or organizations serving them), people with chronic conditions, uninsured community members, low income residents, and minority groups.

Thomas County's Town Hall meeting was held over lunch on Monday March 5, 2012 at the City Limits Convention Center. Vince Vandehaar and Megan Carollo facilitated this 1½ hour session with thirty-three (33) community attendees. (Note detail roster of Town Hall attendees is listed in Section V.a) The following agenda was followed:

1. Welcome & Introductions
2. Purpose for the CHNA Town Hall and roles in the process
3. Presentation / Review of historical County Health Indicators (10 TABS)
4. Facilitate Town Hall discussion of data (probe health strengths / concerns). Reflect on size and seriousness of any health concerns cited and discuss current community health strengths.
5. Identify and rank top community health concerns. Encourage all Town Hall participants to vote (using 4 dots to cast votes) on priority issues.
6. Close meeting by reflecting on the health needs / community voting results.

(Note: At the end of each Town Hall session, WV encouraged all community members to continue to contribute ideas by going online and taking CHNA Additional Thoughts feedback survey.)

To review Town Hall discussion content, the next four pages document the Town Hall presentation and flow of public conversations. In addition, an example of the CHNA Additional Thoughts online feedback survey is provided.

## Community Health Needs Assessment Thomas County, KS Town Hall Meeting

Vince Vandelaar, MBA  
VVV Research & Development INC.  
Owner and Adjunct Marketing Professor

Olathe, Kansas 66061  
vmlvandelaar@aol.com

<http://sites.google.com/site/vvvresearchdevelopment/>  
Blackberry: 913-302-7264

## Community Health Needs Assessment (CHNA) Town Hall Discussion Agenda

- I. Opening / Introductions (10 mins)
- II. Review CHNA Purpose & Process (10 mins)
- III. Review Current County "Health Status" – Secondary Data by 10 TAB Categories plus preliminary results – paper/online CHNA survey N=390 (25 mins)
- IV. Collect Community Health Perspectives , Ask your opinion. (20 mins)
- V. Community Health Voting Activity: Determine MOST Important Health areas (20 mins)
- VI. Close / Next Steps (5 mins)

VVV Marketing & Development INC. Oct 2011

### I. Introduction:

Background and Experience



Vince Vandelaar MBA, VVV Marketing & Development INC  
Principal Consultant, Olathe, KS 913 302-7264

- ~ Professional Consulting Services: Strategic Planning, Marketing Management, Business Research & Development Focus : Strategy , Research , Deployment
  - ~ Over 25 years of experience with Tillinghast, BCBSKC, Saint Luke's
- Adjunct Professor - Marketing / Health Admin.- 24 years +
- Webster University (1988 – present)
  - Rockhurst University (2010 – present)

Megan Carollo MBA, Business Development  
Analyst

### I. Introductions: a conversation with the community.

Community members and organizations invited to CHNA Town Hall

**Consumers:** Uninsured/underinsured people, Members of at-risk populations, Parents, caregivers and other consumers of health care in the community, and Consumer advocates.

**Community leaders and groups:** The hospital organization's board members, Local clergy and congregational leaders, Presidents or chairs of civic or service clubs – Chamber of Commerce, veterans' organizations, Lions, Rotary, etc., Representatives from businesses – owners/CEO's of large businesses (local or large corporations with local branches), Business people & merchants (e.g., who sell tobacco, alcohol, or other drugs), Representatives from organized labor, Political, appointed and elected officials, Foundations, United Way organizations. And other "community leaders."

**Public and other organizations:** Public health officials, Directors or staff of health and human service organizations, City/Community planners and development officials, Individuals with business and economic development experience, Welfare and social service agency staff, Housing advocates - administrators of housing programs: homeless shelters, low-income-family housing and senior housing, Education officials and staff - school superintendents, principals and teachers, Public safety officials, Staff from state and area agencies on aging, Law enforcement agencies - Chiefs of police, Local colleges and universities, Coalitions working on health or other issues.

**Other providers:** Physicians, Leaders in other not-for-profit health care organizations, such as hospitals, clinics, nursing homes and home-based and community-based services, Leaders from Catholic Charities and other faith-based service providers, Mental health providers, Oral health providers, Health insurers, Parish and congregational nursing programs, Other health professionals

## Town Hall Participation (You)

- ALL attendees welcome to share.
  - Parking Lot
- There are no right or wrong answers.
- Only one person speaks at a time.
- Please give truthful responses.
- Have a little fun along the way.

## II. Purpose: Why conduct Community Health Needs Assessment?

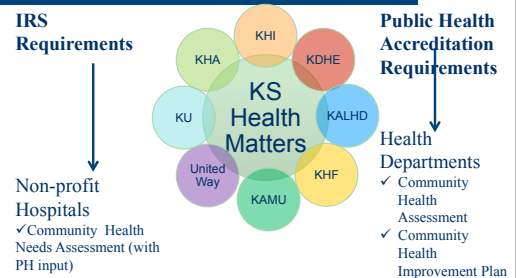
- To determine health-related trends and issues of the community.
- To understand/evaluate health delivery programs in place.
- To develop strategies to address unmet health needs.
- To meet Federal requirements – both local hospital & Health Department.

## II. Review CHNA Definition

A Community Health Needs Assessment (CHNA) is a systematic collection, assembly, analysis, and dissemination of information about the health of the community. *<NOTE: Some the data has already been collected (published) by local, state and federal public health organizations. Some data will be collected today.>*

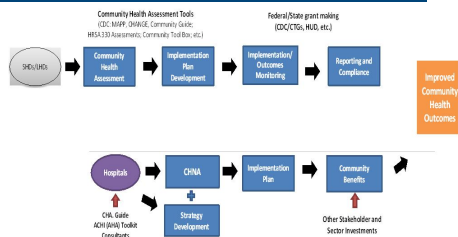
CHNA's role is to identify factors that affect the health of a population and determine the availability of resources to adequately address those factors.

## Kansas Partnership for Improving Community Health





## Community Health Needs Assessment Joint Process: Hospital & Health Department



## II. Required Written Report IRS 990 Documentation .....

- a description of the community served
- a description of the CHNA process
- the identity of any and all organizations & third parties which collaborated to assist with the CHNA;
- a description of how the organization considered the input of persons representing the community (*e.g., through meetings, focus groups, interviews, etc.*), who those persons are, and their qualifications;
- a prioritized description of all of the community needs identified by the CHNA and
- a description of the existing health care facilities and other resources within the community available to meet the needs identified through the CHNA.

## What is our Thomas County Health Score? Color Card Very Good (5)..... Fair (3).....Very Poor (1)



## III. Review Current County "Health Status" – Secondary Data by 10 TAB Categories (CARD)

TAB 1. Demographic Profile
TAB 2. Economic/Business Profile
TAB 3. Educational Profile
TAB 4. Maternal and Infant Health Profile
TAB 5. Hospitalization / Providers Profile
TAB 6. Behavioral Health Profile
TAB 7. Risk Indicators & Factors
TAB 8. Uninsured Profile
TAB 9. Mortality Profile
TAB 10. Preventative Quality Measures

#### IV. Collect Community Health Perspectives Ask your opinion. Your thoughts?

- ❑ Today: What are the *strengths* of our community that contribute to health
- ❑ Today: Are there healthcare services in your community / neighborhood that you feel need to be improved and / or changed?
- ❑ Tomorrow: What is occurring or might occur that affects the health of our community?

#### IV. Collect Community Health Perspectives Ask your opinion. Your thoughts?

- ❑ Share Town Hall Team Reports:
  - ❑ *Health strengths* of our community that contribute to health
  - ❑ Health improvements / Changes
- ❑ Conduct Town Hall health improvement vote (4 stickers per participant)
- ❑ TALLY results & Seek Town Hall reaction

#### V. Determine MOST Important Health Areas to Improve/Change. PROBE

- |                                |                                    |
|--------------------------------|------------------------------------|
| a. Aging Services              | m. Hospice                         |
| b. Chronic Pain Management     | n. Hospital Services               |
| c. Dental Care/Oral Health     | o. Maternal, Infant & Child Health |
| d. Developmental Disabilities  | p. Nutrition                       |
| e. Domestic Violence,          | q. Pharmacy Services               |
| f. Early Detection & Screening | s. Primary Health Care             |
| g. Environmental Health        | t. Public Health                   |
| h. Exercise                    | u. School Health                   |
| i. Family Planning             | v. Social Services                 |
| j. Food Safety                 | w. Specialty Medical Care Clinics  |
| k. Health Care Coverage        | x. Substance Abuse                 |
| l. Health Education            | y. Transportation                  |
| m. Home Health                 | z. Other _____                     |

#### Community Health Needs Assessment Town Hall Feedback Survey

<https://www.surveymonkey.com/s/YY3V2XH>

#### Questions Next Steps ?

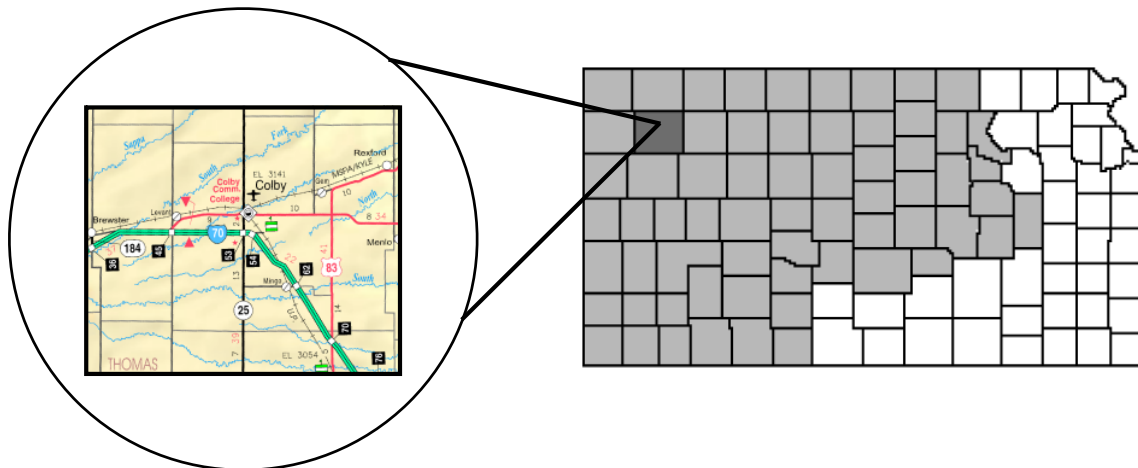
VVV Research & Development INC.  
vmlvandehaar@aol.com  
913 302-7264

## II Methodology

### d) Community Profile (Demographic/Economics)

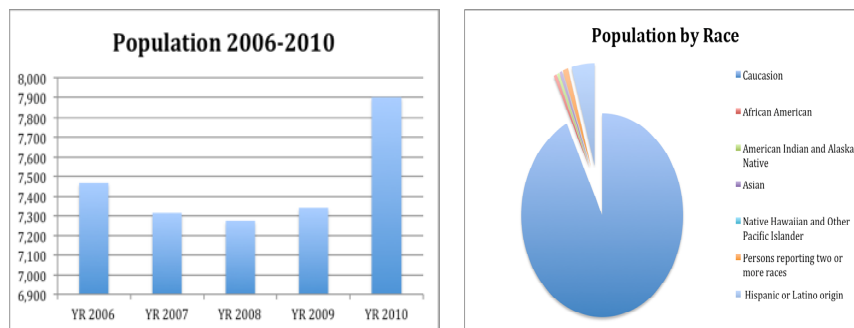
A description of community served

#### Thomas County Community Profile



#### Demographics

The population of Thomas County was estimated to be **7,900 citizens** in 2010, and had a 5.8% change in population from 2006 – 2010. The county covers 1,074.7 square miles and this area includes the Prairie Museum of Art & History, Cooper Barn, the Thomas County Courthouse, and the Northwest Research and Experiment Center<sup>1</sup>. The county has an overall population density of 7.4 persons per square mile, compared to the State average of 34.9 persons per square mile. The county is located in northwest Kansas and agriculture, fishing, hunting, construction, educational services, public administration, and accommodation & food service are the most common industries in its economy<sup>2</sup>. The county was founded in 1885 and the county seat is Colby<sup>3</sup>.



<sup>1</sup> <http://oasiontheplains.com/beourguest/attractions-a-recreation>

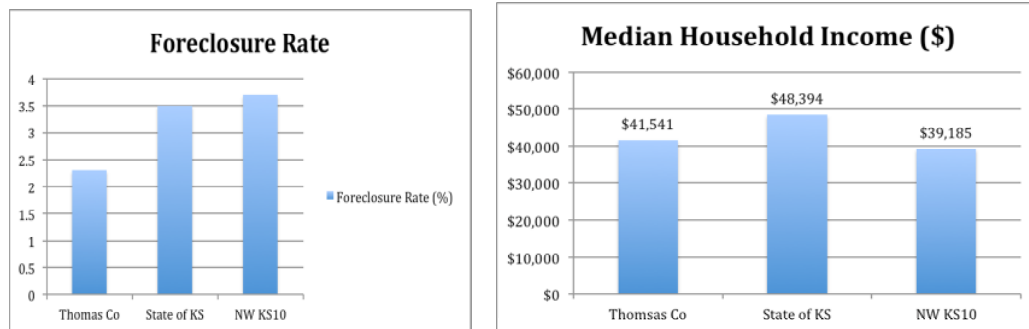
<sup>2</sup> [http://www.city-data.com/county/Thomas\\_County-KS.html](http://www.city-data.com/county/Thomas_County-KS.html)

<sup>3</sup> <http://www.skyways.org/counties/TH/>

The most populous communities of the region are Colby (6,957), Brewster (367) and Rexford (313)<sup>4</sup>. These three cities comprise roughly 75% of the County's total population and are approximately 20 miles apart from each other.

**The major highway transportation** access to Thomas County is U.S. interstate 70, which runs from the southeast corner through the center of the county in an east-west direction. Kansas highways 83 and 25 run north–south through the county, and Kansas Highway 24 runs east–west.

**Homeownership in Thomas County** is better than other counties in the region. Median price of an owner-occupied home in Thomas County is \$84,100– which is lower than the state median value of \$118,500. However, Thomas County only has a homeownership rate of 51.5%, significantly lower than both the state average (69.5%) and the NW Kansas region (71.9%). However, Thomas County's foreclosure rate (2.3%) is lower than both the state average (3.5%) and NW Kansas Region (3.7%).



**Employment** in Thomas County results in a median household income only 14% lower than the state average, and 6% higher than the NW KS Region. The slight income difference between the county and the state is validated by the average weekly wages; in Thomas County weekly wages were \$539 in June of 2011, 24% lower than the state weekly wage of \$754<sup>5</sup>. Private wage or salaried workers comprise 70% of the population; the remaining workforce is employed by the government (16%), self-employed (13%), or unpaid family work (1%)<sup>6</sup>. The percentage of unemployed workers in the civilian labor force in Thomas County is 3.6% compared to the state average unemployment rate of 7.0%<sup>7</sup>.

<sup>4</sup> <http://www.skyways.org/counties/TH/>

<sup>5</sup> <http://www.bls.gov/ro7/qcewks.pdf>

<sup>6</sup> [http://www.city-data.com/county/Thomas\\_County-KS.html](http://www.city-data.com/county/Thomas_County-KS.html)

<sup>7</sup> <http://www.ers.usda.gov/Data/Unemployment/RDList2.asp?ST=KS>

## Detail Demographics - Thomas County

			Sq	Per	Total	Gender		Age Ranges				
ZIP	CITY	ST	Miles	Capita	Pop10	M	F	00-17	18-44	45-64	65-74	75Plus
	Thomas, KS		1016	\$21,552	7900	3432	3604	1519	2585	1808	529	595
						49%	51%	22%	37%	26%	8%	8%
67701	COLBY	KS	723	\$26,182	6957	2946	3147	1305	2299	1552	425	512
67732	BREWSTER	KS	97	\$18,849	367	184	183	102	94	100	36	35
67753	REXFORD	KS	90	\$26,142	313	161	152	66	92	77	44	34
67743	LEVANT	KS	70	\$18,870	138	77	61	21	52	42	14	9
67734	GEM	KS	36	\$22,880	125	64	61	25	48	37	10	5
			Sq	Per	Total	Med	Moms	Ethnic		Insurance		
ZIP	CITY	ST	Miles	Capita	Pop11	Age	18-44	Hisp	White	MCare	Mcaid	No Ins
	Thomas, KS		1016	\$21,552	7900	36	1306	151	6743	1193	561	983
							19%	2%	96%	17%	8%	14%
67701	COLBY	KS	723	\$26,182	6957	35	1179	132	5824	993	490	855
67732	BREWSTER	KS	97	\$18,849	367	40	44	9	356	77	33	53
67753	REXFORD	KS	90	\$26,142	313	44	43	4	308	81	18	31
67743	LEVANT	KS	70	\$18,870	138	43	17	3	133	25	10	24
67734	GEM	KS	36	\$22,880	125	39	23	3	122	17	10	20

Source: Claritus

# **III. Community Health Status**

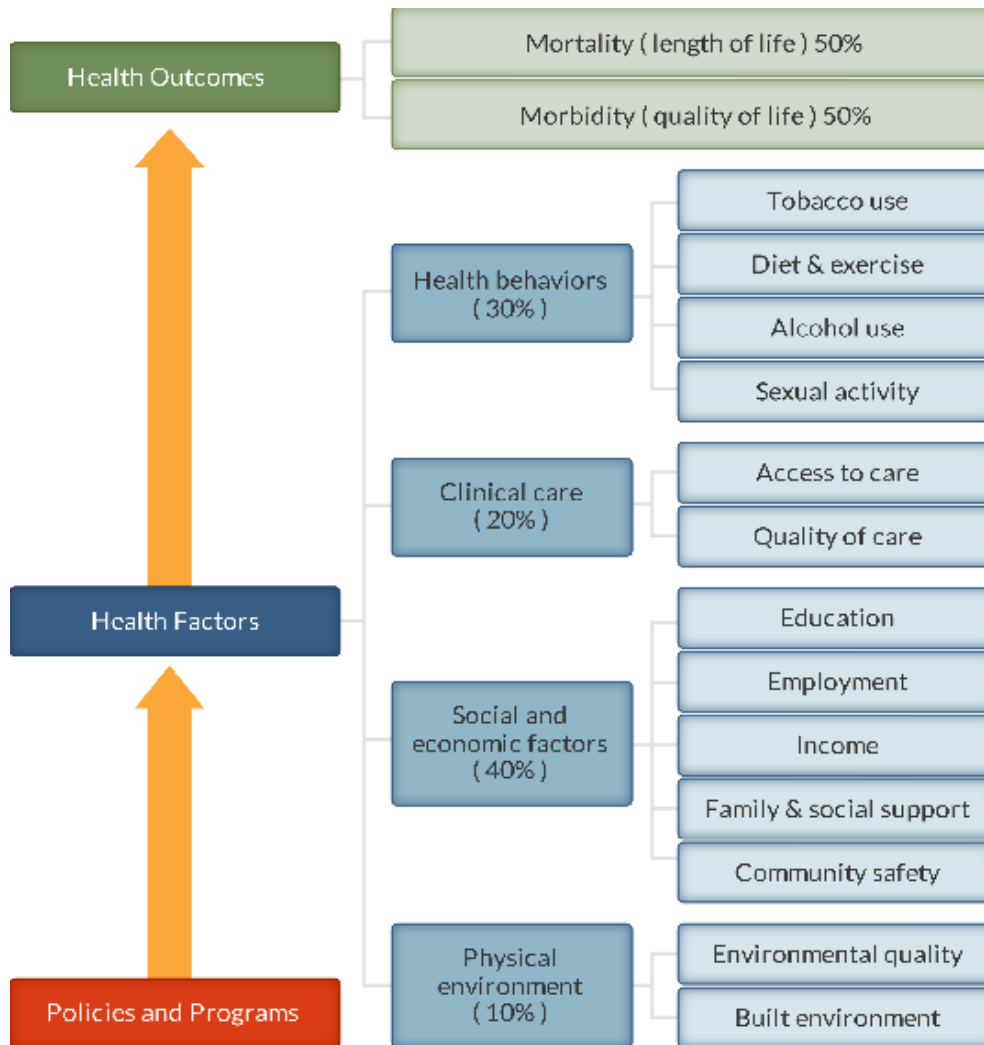
---

[VVV Research & Development INC]

**II. Community Health Status**  
**a. Historical Health Statistics**

**Health Status Profile – Thomas County KS**

This section of the CHNA reviews published quantitative community health indicators and results of our recent CHNA Town Hall. To produce this profile, VVV Research & Development staff analyzed data from multiple sources. This analysis focuses on a set of published health indicators organized by ten areas of focus (10 TABS), results from the 2012 County Health Rankings and conversations from Town Hall primary research. (Note: The Robert Wood Johnson Foundation collaborates with the University of Wisconsin Population Health Institute to release annual *County Health Rankings*. As seen below in model, these rankings are based on a number of health factors.)



County Health Rankings model ©2012 UWPHI

The County Health

## 2012 State Health Rankings for Thomas County, Kansas

County Health Rankings					
#	KS Rank of 100 counties	Definitions	Thomas Co KS	Trend	NW KS10
1	Physical Environment	Environmental quality	23		56
2	Health Factors		19		38
2a	Clinical Care	Access to care / Quality of Care	58		53
2b	Social & Econ Factors	Education, Employment, Income, Family/Social support, Community Safety	19		35
3	Health Outcomes		58		45
3a	Health Behaviors	Tobacco Use, Diet/Exercise, Alcohol Use, Sexual Activity	18		48
3b	Morbidity	Quality of life	30		45
3c	Mortality	Length of life	77		38
<a href="http://www.countyhealthrankings.org">http://www.countyhealthrankings.org</a>					

One of the IRS CHNA requirements is to understand community health strengths and weaknesses. Below is a table documenting Town Hall healthcare areas of strength and weakness relating to availability, access, and/or quality.

Thomas Co KS (N = 33)	
Town Hall Strengths Cited	Town Hall Weaknesses Cited
Excellent EMS services	Access to Home Health care services
Available fitness opportunities	Better access to specialists (Surgery, Ortho, Dialysis, Cancer Services)
High success rate with breastfeeding	Dentists who accept Medicaid
Low premature birth weight of babies born in community	Need to continue Economic development
Low unemployment rate	Need more mental health providers and better access to mental health services
Number of providers practicing in area. Surgeons coming to the area. Visiting doctors.	Obesity in the community
School lunch program	Lack of Social Services (state funds keep getting cut)
Very involved community (Colby). High survey response rate.	

During the course of our Town Hall meeting, participants had the opportunity to vote on what they



felt needs additional attention to improve community health. (Note: Each individual was given four (4) votes to distribute across health topics cited.) Below is a ranking of Town Hall findings.

<b>2012 Health Needs - Thomas County KS (Ranked)</b>			
#	Health Areas of Future Focus	Counts	%
1	Mental Health (Awareness of Providers / Funding)	22	17%
2	Obesity	17	13%
3	Specialty Services (Chemo, Radiation, Dialysis, Surgery)	16	12%
4	Uninsured	16	12%
5	Dentists (That Accept Medicaid)	14	11%
6	Home Health	13	10%
7	Teen Pregnancy	9	7%
8	Transportation	6	5%
9	Chronic Disease	6	5%
10	Social Services	6	5%
11	Heart Disease	3	2%
12	Substance Abuse	2	2%
13	Nursing Home	2	2%
<b>TOTAL</b>		<b>132</b>	<b>100%</b>

## Secondary Research

When considering the state of community health, it's important to review published health data by topic area. Below is a summary of key TABS of information collected:

**Tab 1 & 2 Demographics/Economics**

Business Quality Indicators www.healthmatters.com					
#	Business QuickFacts	Thomas Co	Trend	State of KS	NW KS10
1	Private nonfarm establishments, 2009	355		746,981	3,485
2	Private nonfarm employment, 2009	3,021		11,462,631	34,534
3	Private nonfarm employment, percent change 2000-2009	12.70%		1.60%	
4	Nonemployer establishments, 2009	734		173,946	7,441
5	Total number of firms, 2007	997		237,040	10,138
6	Households with Public Assistance (%)	2.2		2.3	1.5
#	Business QuickFacts	Thomas Co	Trend	State of KS	NW KS10
1	Unemployed Workers in Civilian Labor Force (%)	3.6			3.7
2	Per Capita Income (\$)	\$21,552		\$25,522	\$20,798
3	Median Household Income (\$)	\$41,541		\$48,394	\$39,185
4	Mean Travel Time to Work (Minutes)	12		18.7	12.7
5	Average Monthly WIC Caseload (per 1,000 population)	28.6		NA	25.4
Indicator <a href="http://www.countyhealthrankings.org">http://www.countyhealthrankings.org</a>		Thomas Co	Trend	State of KS	NW KS10
1	Children in poverty	12%		18%	17%
2	Fast food restaurants	50%		48%	45%

#	Pop History Vital Statistics	% Change 2006-2010	YR 2006	YR 2007	YR 2008	YR 2009	YR 2010
1	Thomas County Population	5.8	7,468	7,314	7,277	7,343	7,900
#	People QuickFacts		Thomas Co	TREND	State of KS		NW KS10
1	Households, 2005-2009		3,091		1,093,694		38,022
2	Persons per household, 2005-2009		2.2		2.46		2.2
3	Per capita money income in past 12 months (2009 dollars) 2005-2009		\$21,552		\$25,522		\$20,798
4	Median household income, 2009		\$44,836		\$47,709		\$40,685
#	HealthMatters.com Categories		Thomas Co	Trend	State of KS		NW KS10
1	Ratio of Children to Adults (% children to adults)		28.6		NA		27.8
2	Ratio of Elderly Persons to Adults (% elderly to adults)		24		NA		31.1
3	Ratio of Elderly Persons and Children to Adults (% elderly / children to adults)		52.6		NA		58.9
4	Voter Turnout (%)		67.7		72.3		71.2
5	People Living Below Poverty Level (%)		13.3		12.2		11.1
6	People Living 200% Above Poverty Level (%)		69.3		69.3		65.2
7	People 65+ Living Below Poverty Level (%)		9.5		8		8.0
8	People 65+ Living Alone (%)		26.1		29.6		27.9
9	Language other than English spoken at home, pct age 5+, 2005-2009		4.00%		9.90%		4.34%
Source U.S. Census Bureau: State and County QuickFacts. Data derived from Population Estimates, American Community Survey, Census of Population and Housing, Small Area Income and Poverty Estimates, State and County Housing Unit Estimates, County Business Patterns, Nonemployer Statistics, Economic Census, Survey of Business Owners, Building Permits, Consolidated Federal Funds Report							

**Tab 3 Public Schools Health Delivery Profile.** Currently school districts are providing on site primary health screenings and basic care.

#	Indicators	Thomas CO
1	Total # Public School Nurses	1
2	School Nurse is part of the IEP team Yes/No	yes
3	School Wellness Plan (Active)	yes
4	VISION: # Screened / Referred to Prof / Seen by Professional	587/14/NA
5	HEARING: # Screened / Referred to Prof / Seen by Professional	455/28/NA
6	ORAL HEALTH: # Screened / Referred to Prof / Seen by Professional	160/52/NA
7	SCOLIOSIS: # Screened / Referred to Prof / Seen by Professional	102/25/NA
8	# of Students served with no identified chronic health concerns	731
9	School has a suicide prevention program	yes
10	Compliance on required vaccinations (%)	95%

#	People QuickFacts <a href="http://www.healthmatters.com">www.healthmatters.com</a>	Thomas Co	Trend	State of KS	NW KS10
1	Students Eligible for the Free Lunch Program (%)	24.2			27.4
2	Poverty Status by School Enrollment (%)	7.4			5.7

- **TAB 4 Maternal and Infant Health Profile.** Tracking maternal & infant care patterns are vital in understanding the foundation of family health.

#	Vital Statistics: Maternal and Infant Health Profile, 2010	Thomas Co	Trend	KS	NW KS10
1	Total Live Births, 2006	108		40,896	1,107
2	Total Live Births, 2007	102		41,951	1,196
3	Total Live Births, 2008	108		41,815	1,145
4	Total Live Births, 2009	108		41,388	1,193
5	Total Live Births, 2010	115		40,439	1,136
6	Total Live Births, 2006-2010 - Five year Rate (%)	14.50		14.70%	
7	Low Weight Births (under 2,500 grams / 5 lb. 8 oz.)	23		9,961	191
8	Percent Premature (<37 weeks)	4.30%		8.8%	8.16%
9	Number of Stillbirths	0		168	3
10	Births with Prenatal Care in First 3 Months	88		29552	905
11	Percentage of Mothers Who Initiate Breastfeeding	87.8%		77.2%	80.8%
12	Mothers Who Smoke Any Time During Pregnancy	17		5919	194
13	Percentage of Mothers who Smoke Any Time During Pregnancy	14.8%		15%	18.6%

- **TAB 5 Hospitalization/Provider Profile** Understanding provider access and disease patterns are fundamental in healthcare delivery. Listed below are several vital county statistics.

KS Hospital Assoc PO103	Thomas County Residents			
	FFY2008	FFY2009	FFY2010	Trend
Total Discharges	1316	1174	990	
Total IP Discharges-Age 0-17 Pediatric	77	62	51	
Total IP Discharges-Age 18-29	141	125	79	
Total IP Discharges-Age 30-44	231	238	194	
Total IP Discharges-Age 45-64	178	158	133	
Total IP Discharges-Age 65+	425	311	277	
Psychiatric	27	33	27	
Obstetric	127	129	115	
Newborn	110	118	114	
Surgical %	21.60%	23.00%	25.5%	

• **TAB 5 Hospitalization/Provider Profile** (Continue)

#	HealthMatters.com Categories	Thomas Co	Trend	State of KS	NW KS10
1	Injury Hospital Admission Rate (per 100,000 pop)	752.62			820.9
2	Heart Disease Hospital Admission Rate (per 100,000 Pop)	329.23			338.6
3	Congestive Heart Failure Hospital Admission Rate (per 100,000 Pop)	368.54			277.7
4	Chronic Obstructive Pulmonary Disease (COPD) Hospital Admission Rate (per 100,000)	403.7			275.5
5	Bacterial Pneumonia Hospital Admission Rate (per 100,000)	785.35			662.3
6	Staffed Hospital Bed Ratio (per 1,000 Pop)	3.4			15.9
	<a href="http://www.countyhealthrankings.org">www.countyhealthrankings.org</a>	Thomas Co	Trend	State of KS	NW KS10
1	Preventable hospital stays	127		70	114
2	Primary care physicians per	1836		857	1,072

- **TAB 6 Social & Rehab Services Profile.** Behavioral health and rehabilitation care provide another important indicator of community health status. Below is a summary of the previous 3 years of assistance.

	Thomas Co						Trend
Source: Kansas Dept of	Persons Served			Annual Service Dollars			
Social & Rehab Services	FY 2009	FY 2010	FY 2011	FY 2009	FY 2010	FY 2011	
Substance Abuse (PIHP)	10	11	10	\$18,496	\$18,630	\$6,582	
Mental Health (PAHP)	122	130	145	\$228,942	\$176,860	\$229,686	
Home and Community Based Services							
Physical Disability	24	19	16	\$303,187	\$242,409	\$165,445	
Traumatic Brain Injury	1	0	0	\$527	\$0	\$0	
Developmental Disability	8	51	7	\$217,290	\$210,991	\$218,316	
Autism	0	0	0	\$0	\$0	\$0	
Major Services (Average per Month)							
Temporary Assistance for Families	50	48	68	\$67,034	\$59,517	\$83,703	
TANF Employment Services	23	20	33	\$4,806	\$4,129	\$13,108	
Child Care Assistance	34	46	48	\$105,731	\$163,646	\$140,373	
Food Assistance	357	441	472	\$411,793	\$582,994	\$650,834	

- **TAB 7 Health Risk Profiles.** Knowing community health risk factors and disease patterns can aid in the understanding “next steps” to improve health. Being overweight/obese; smoking, drinking in excess, not exercising, etc. can lead to poor health.

	Indicator <a href="http://www.countyhealthrankings.org">http://www.countyhealthrankings.org</a>	Thomas	Trend	KS	NW KS10
1	Adult obesity	31%		30%	32%
2	Adult smoking	17%		18%	18%
3	Excessive drinking	12%		15%	13%
1	Inadequate social support	12%		16%	15%
4	Physical inactivity	22%		24%	28%
2	Poor mental health days	2.6		2.8	2.6
3	Poor physical health days	2.4		3.0	2.8
5	Sexually transmitted infections	96		375	171

#	HealthMatters.com Categories	Thomas Co	Trend	KS	NW KS10
9	Age-Adjusted Years of Potential Life Lost - Cancer (Yrs p/ 100,000 Pop)	819.1			1529.0
11	Age-Adjusted Years of Potential Life Lost - Chronic Lower Respiratory Disease (Yrs p/ 100,000 Pop)	233.6			204.0
12	Age-Adjusted Years of Potential Life Lost - Diabetes	308.1			183.6
13	Age-Adjusted Years of Potential Life Lost - Heart Disease (Yrs p/ 100,000 Pop)	562.8			1156.4
15	Age-Adjusted Years of Potential Life Lost - Nephritis, Nephrotic Syndrome Nephrosis (Yrs p/ 100,000 Pop)	151.3			219.7
16	Age-Adjusted Years of Potential Life Lost - Suicide	803.5			712.7
17	Age-Adjusted Years of Potential Life Lost - Traffic Injury	1961.4			1434.8
18	Age-Adjusted Years of Potential Life Lost - Unintentional Injuries (Yrs p/ 100,000 Pop)	2817.4			2158.5

- **TAB 8 Uninsured Profiles.** Based on synthetic estimations, the number of insured is documented below. Also, the amount of charity care (last 3 years of free care) from area providers is trended below.

	Indicator <a href="http://www.countyhealthrankings.org">http://www.countyhealthrankings.org</a>	Thomas	Trend	KS	NW KS10
1	Uninsured	14%		15%	17%
#	Charity Care by Individual Facility	YR09	YR10	YR11	Trend
2	Local Hospital Charity Care	\$370,091	\$355,435	\$496,055	

- **TAB 9 Mortality Profile.** The leading causes of county deaths are listed below. Areas of higher than expected are so noted.

#	Causes of Death by County of Residence, KS 2010				
	Selected Causes of Death (ICD-10)	Thomas Co	Trend	State of KS	NW KS10
	<b>TOTAL</b>	87		24,428	
1	All Malignant Neoplasms	24		5,359	
2	Major Cardio-vascular Disease	23		7,504	
3	Disease of Heart	20		5,404	
4	Ischemic Heart Disease	11		3,169	
5	All Other Causes	10		3,961	
6	Other Malignant Neoplasms	9		1,138	
7	Other Heart Diseases	9		2,070	
8	All Other Accidents and Adverse	6		876	

#	HealthMatters.com Categories	Thomas Co	Trend	KS	NW KS10
1	Age-adjusted Alzheimer's Disease Mortality Rate per 100,000 population	26.7		28.6	28.1
3	Age-adjusted Cancer Mortality Rate per 100,000 population	169.7		187.8	169.8
4	Age-adjusted Cerebrovascular Disease Mortality Rate per 100,000 population	40.9		47.9	43.7
5	Age-adjusted Chronic Lower Respiratory Disease Mortality Rate per 100,000 population	65.4		55.4	48.2
6	Age-adjusted Diabetes Mortality Rate per 100,000 population	40.0		23	30.5
7	Age-adjusted Heart Disease Mortality Rate per 100,000 population	167.3		189.4	180.7
9	Age-adjusted Mortality Rate per 100,000 population	861.9		856.1	778.5
11	Age-adjusted Suicide Mortality Rate per 100,000 population	27.9		14.3	32.9

- **TAB 10 Preventive Health Profile.** The following table reflects future health of county. This information also is an indicator of community awareness of preventative measures.

	<a href="http://www.countyhealthrankings.org">www.countyhealthrankings.org</a>	Thomas	Trend	KS	NW KS10
1	Diabetic screening	90%		85%	82%
2	Limited access to healthy foods	5%		7%	10%
3	Mammography screening	64%		67%	68%
4	Poor or fair health (Self Assess)	14%		13%	11%

## Primary Research Findings

**Thomas County** also conducted primary research during the spring of 2012. Following are key questions revealing public feelings toward health delivery satisfaction, need for further education/focus and areas needing additional education and/or attention.

Community Healthcare Needs Assessment 2012							
In general, how would you rate the overall quality of the healthcare delivered to your community?							
Answer Options	Top 2 Boxes %	Very Good	Good	Fair	Poor	Very Poor	N
Thomas Co KS N=230	77.6%	28.8%	48.9%	16.4%	4.6%	1.4%	219
NW KS (4) N=1469	79.3%	30.4%	48.9%	16.8%	3.4%	0.5%	1380

• Community Healthcare Needs Assessment 2012						
In your opinion, how much of a problem are the following causes of diseases or disability in your community?						
	NW KS N=1469	Thomas CO N=230				
Answer Options	Major Problem %	0.594737	Not a Problem	Somewhat of a Problem	Major Problem	Don't Know
g) Obesity	57.3%	59.3%	4	73	113	20
a) Cancer	62.1%	52.2%	3	71	108	29
c) Drugs / Alcohol	58.5%	51.1%	10	75	93	32
b) Diabetes	54.1%	40.1%	5	81	90	35
d) Heart Disease	49.1%	30.6%	5	95	67	43
i) Respiratory Disease	23.7%	22.3%	9	100	48	53
f) Mental Disorders	24.6%	17.5%	17	84	29	77
h) Pneumonia / Flu	16.3%	16.8%	21	111	28	48
k) Stroke	23.7%	15.8%	13	106	24	66
m) Trauma	16.0%	11.9%	22	79	19	84
j) Sexually Transmitted Dis	16.5%	5.8%	26	63	12	108
l) Suicide	19.7%	3.8%	29	85	7	86
e) HIV / AIDS	3.8%	3.8%	78	23	4	104
Other (please specify)						

Community Healthcare Needs Assessment 2012									
	NW KS N=1469	Thomas CO N=230							
How satisfied are you with each of the following . . . ?	Poor / Very Poor %	Poor / Very Poor %	Very Good	Good	Fair	Poor	Very Poor	N/A	N
k) Mental Health Services	22.8%	26.4%	9	42	44	17	17	80	209
h) Home Health	8.5%	21.6%	9	47	31	17	7	100	211
b) Child Care	12.7%	10.1%	13	66	37	11	2	80	209
e) Emergency Room	8.6%	9.7%	53	93	30	13	6	20	215
a) Ambulance Service	3.6%	9.1%	26	82	41	11	4	51	215
p) Public Health Department	4.4%	7.2%	33	93	29	9	3	42	209
g) Family Planning Services	9.8%	6.9%	15	58	21	7	0	105	206
q) School Nurse	6.0%	6.7%	17	69	25	4	4	86	205
i) Hospice	6.2%	6.6%	33	60	21	3	5	88	210
d) Dentists	9.5%	6.5%	47	95	44	11	2	18	217
r) Specialist Physician care	9.6%	6.5%	53	86	35	7	5	27	213
l) Nursing Home	13.9%	6.0%	23	78	40	5	4	65	215
j) Inpatient Services	5.5%	5.8%	45	90	28	5	5	40	213
o) Primary Care	5.4%	5.5%	76	89	25	8	3	9	210
m) Outpatient Services	3.3%	3.3%	56	95	27	5	1	30	214
c) Chiropractor	2.6%	2.2%	90	78	13	2	2	32	217
f) Eye Doctor / Optometrist	2.3%	1.9%	108	85	11	3	1	10	218
n) Pharmacy	1.7%	0.9%	103	91	18	0	2	4	218
Other (please specify)									10

Community Healthcare Needs Assessment 2012						
How well do you feel our local health care providers are doing in addressing the health needs of the following age groups?						
	NW KS N=1469	Thomas CO N=230				
Answer Options	Poor / Very Poor %	Poor / Very Poor %	Very Good	Good	Fair	Poor
Infants	5.7%	7.1%	57	78	23	4
Age 1 - 12	4.7%	6.3%	50	91	24	6
Age 13 -17	5.1%	9.2%	48	81	28	10
Age 18 - 44	4.9%	6.7%	49	90	29	8
Age 45 - 64	6.0%	4.5%	50	84	34	4
Age 65 - 84	8.5%	8.9%	56	80	28	9
Over 85	9.7%	10.1%	45	71	27	8



Community Healthcare Needs Assessment 2012				
In your opinion, what areas need additional education or attention in our community? (Check all that apply)	NW KS N=1469	% YES	Thomas CO N=230	% Yes
l) Obesity	800	8.3%	138	9.2%
s) Teen Pregnancy	548	5.7%	107	7.1%
p) Preventative Healthcare	551	5.7%	103	6.9%
k) Nutrition	512	5.3%	93	6.2%
x) Wellness Education	490	5.1%	93	6.2%
c) Alcohol	625	6.5%	86	5.7%
b) Aging (Dementia)	598	6.2%	85	5.7%
a) Abuse / Violence	497	5.2%	76	5.1%
u) Uninsured	472	4.9%	70	4.7%
t) Tobacco Use	474	4.9%	68	4.5%
f) Chronic Diseases	332	3.5%	63	4.2%
i) Mental Illness	408	4.3%	63	4.2%
d) Alternative Medicine	304	3.2%	62	4.1%

Personal Health				
Compared to a year ago, how would you rate your overall health in general now?	NW KS N=1469	% YES	Thomas CO N=230	% Yes
Much better than a year ago	161	12.0%	27	12.6%
About the same	1129	84.2%	180	84.1%
Much Worse than a year ago	51	3.8%	7	3.3%
answered question	1341	100.0%	214	100.0%

Do you follow these health practices . . .?	NW KS N=1469	% YES	Thomas CO N=230	% Yes
If over 50, have you had a colonoscopy?	864	69.2%	133	63.9%
If male over 50, do you have annual prostate exams?	412	68.7%	57	63.2%
If female over 40, do you have annual mammograms?	848	79.8%	123	75.6%
If female, do you have a pap smear every other year?	1002	71.8%	148	73.0%
Do you get 2.5 hours a week of moderately intense physical activity?	1288	61.3%	203	61.1%

Are you. . .?	NW KS N=1469	% YES	Thomas CO N=230	% Yes
Eating right	1312	75.5%	210	76.7%
Using tobacco products	1307	11.5%	210	12.4%
Exercising	1307	69.2%	207	66.2%
Excessive Alcohol Consumption	1296	1.6%	205	2.4%

Finally reviewing open end comments is necessary to understand “word of mouth” trends. Below are tallies regarding services received outside community and suggestions for improvement.

<b>Thomas Co KS Summary - CHNA Open End Comments</b>					
#	Code	HC Themes	Q3 Received HC outside county last 2 yrs	Q4 Are there HC services that need to be improved?	Total
<b>Total Comments Open Ends N=230</b>			<b>162</b>	<b>105</b>	<b>267</b>
1	DENT	Dentists	21	7	28
2	SUR	General Surgery	20	1	21
3	SPEC	Specialist Physician care	14	7	21
4	EYE	Eye Doctor / Optometrist	15	2	17
5	ORTH	Orthopedics	14	1	15
6	DERM	Dermatology	10	3	13
7	DOCS	Physicians	1	11	12
8	EMER	Emergency	7	3	10
9	BH	Mental Health Services	1	8	9
10	OBG	Obstetrics/Gynecology	5	2	7
11	COMM	Communication	0	7	7
12	AMB	Ambulance Service	1	5	6
13	CANC	Cancer	4	2	6
14	FAC	Facility	0	6	6
15	HH	Home Health	1	5	6
16	PEDS	Pediatrics	3	2	5
17	DIAB	Diabetes	4	1	5
18	ONC	Oncology/RADO	4	0	4
19	RAD	Radiology	3	1	4
20	ACC	Access to Care	0	4	4
21	MAMO	Mammogram	4	0	4

## **IV. Inventory of Community Health Resources**

---

**[VVV Research & Development INC]**

Inventory of Health Services - Thomas County KS				
Cat	Services offered in county Yes / No	Hospital	HLTH Dept	Other
Clinic	Primary Care	yes		yes
Hosp	Alzheimer Center			
Hosp	Ambulatory Surgery Centers			
Hosp	Arthritis Treatment Center			
Hosp	Bariatric/weight control services			
Hosp	Birthing/LDR/LDRP Room	yes		
Hosp	Breast Cancer			
Hosp	Burn Care			
Hosp	Cardiac Rehabilitation	yes		yes
Hosp	Cardiac Surgery			
Hosp	Cardiology services	yes		yes
Hosp	Case Management	yes		
Hosp	Chaplaincy/pastoral care services	yes		
Hosp	Chemotherapy	yes		
Hosp	Colonoscopy	yes		
Hosp	Crisis Prevention			
Hosp	CTScanner	yes		
Hosp	Diagnostic Radioisotope Facility	yes		
Hosp	Diagnostic/Invasive Catheterization			
Hosp	Electron Beam Computed Tomography (EBCT)			
Hosp	Enrollment Assistance Services			
Hosp	Extracorporeal Shock Wave Lithotripter (ESWL)			
Hosp	Fertility Clinic			
Hosp	FullField Digital Mammography (FFDM)	yes		
Hosp	Genetic Testing/Counseling			
Hosp	Geriatric Services			
Hosp	Heart			
Hosp	Hemodialysis			
Hosp	HIV/AIDS Services		yes	
Hosp	Image-Guided Radiation Therapy (IGRT)			
Hosp	Inpatient Acute Care - Hospital services	yes		
Hosp	Intensity-Modulated Radiation Therapy (IMRT) 161			
Hosp	Intensive Care Unit			
Hosp	Intermediate Care Unit			
Hosp	Interventional Cardiac Catheterization	no		
Hosp	Isolation room	yes		
Hosp	Kidney			
Hosp	Liver			
Hosp	Lung			
Hosp	Magnetic Resonance Imaging (MRI)	yes		
Hosp	Mammograms	yes		
Hosp	Mobile Health Services			
Hosp	Multislice Spiral Computed Tomography (<64 slice CT)	yes		
Hosp	Multislice Spiral Computed Tomography (<64+ slice CT)			
Hosp	Neonatal			
Hosp	Neurological services			yes
Hosp	Obstetrics	yes		
Hosp	Occupational Health Services	yes		
Hosp	Oncology Services			yes
Hosp	Orthopedic services	yes		yes
Hosp	Outpatient Surgery	yes		
Hosp	Pain Management			
Hosp	Palliative Care Program			

Inventory of Health Services - Thomas County KS				
Cat	Services offered in county Yes / No	Hospital	HLTH Dept	Other
Hosp	Pediatric	yes	yes	
Hosp	Physical Rehabilitation	yes		yes
Hosp	Positron Emission Tomography (PET)			
Hosp	Positron Emission Tomography/CT (PET/CT)	yes		
Hosp	Psychiatric Services			
Hosp	Radiology, Diagnostic	yes		
Hosp	Radiology, Therapeutic			
Hosp	Reproductive Health		yes	
Hosp	Robotic Surgery			
Hosp	Shaped Beam Radiation System 161			
Hosp	Single Photon Emission Computerized Tomography (SPECT)			
Hosp	Sleep Center	yes		
Hosp	Social Work Services	yes		yes
Hosp	Sports Medicine			
Hosp	Stereotactic Radiosurgery			
Hosp	Swing Bed Services	yes		
Hosp	Transplant Services			
Hosp	Trauma Center			
Hosp	Ultrasound	yes		yes
Hosp	Women's Health Services		yes	
Hosp	Wound Care	yes		
SR	Adult Day Care Program			
SR	Assisted Living			yes
SR	Home Health Services			yes
SR	Hospice			yes
SR	LongTerm Care	yes		yes
SR	Nursing Home Services	yes		yes
SR	Retirement Housing			yes
SR	Skilled Nursing Care			yes
ER	Emergency Services	yes		
ER	Urgent Care Center			
ER	Ambulance Services			yes
SERV	Alcoholism-Drug Abuse			
SERV	Blood Donor Center			yes
SERV	Chiropractic Services			yes
SERV	Complementary Medicine Services			
SERV	Dental Services			yes
SERV	Fitness Center			yes
SERV	Health Education Classes	yes	yes	
SERV	Health Fair (Annual)	yes		yes
SERV	Health Information Center			
SERV	Health Screenings	yes	yes	
SERV	Meals on Wheels			yes
SERV	Nutrition Programs	yes		
SERV	Patient Education Center	yes		
SERV	Support Groups	yes		yes
SERV	Teen Outreach Services			
SERV	Tobacco Treatment/Cessation Program			
SERV	Transportation to Health Facilities			yes
SERV	Wellness Program			

Physician Manpower - Thomas County KS			
# of FTE Providers	Supply working in County		
	FTE County Based	FTE Visting	PA/NP
<b>Primary Care:</b>			
Family Practice	4.0	0.0	9.0
Internal Medicine	0.0	0.0	0.0
Obstetrics/Gynecology	0.0	0.0	0.0
Pediatrics	0.0	0.0	0.0
<b>Medicine Specialists:</b>			
Allergy/Immunology	0.0	0.1	
Cardiology	0.0	0.1	
Dermatology	0.0	0.1	
Endocrinology	0.0	0.0	
Gastroenterology	0.0	0.2	
Oncology/RADO	0.0	0.2	
Infectious Diseases	0.0	0.0	
Nephrology	0.0	0.0	
Neurology	0.0	0.1	
Psychiatry	0.0	0.0	
Pulmonary	0.0	0.1	
Rheumatology	0.0	0.1	
<b>Surgery Specialists:</b>			
General Surgery	0.0	0.2	
Neurosurgery	0.0	0.0	
Ophthalmology	0.0	0.1	
Orthopedics	1.0	0.5	
Otolaryngology (ENT)	0.0	0.1	
Plastic/Reconstructive	0.0	0.1	
Thoracic/Cardiovascular/Vasc	0.0	0.0	
Urology	0.0	0.2	
<b>Hospital Based:</b>			
Anesthesia/Pain	0.0	0.0	
Emergency	0.0	0.0	0.0
Radiology	0.0	0.0	
Pathology	0.0	0.0	
Hospitalist *	0.0	0.0	
Neonatal/Perinatal	0.0	0.0	
Physical Medicine/Rehab	0.0	0.0	
<b>TOTALS</b>	<b>5.0</b>	<b>2.2</b>	<b>9.0</b>

### Outreach Visiting Clinics -Thomas County KS

<b>SPECIALTY - DR NAME CITY, STATE</b>	<b>SCHEDULE</b>	<b>CONTACT FOR APPOINTMENT</b>	<b>LOCATION OF OUTREACH CLINIC</b>
<b>Allergy -</b> Dr Michael Volz Greenwood Village, CO	Twice a Month	<b>Citizens Medical Ctr</b> 785-460-1223 785-462-7511	<b>Citizens Medical Center</b> 100 E College Dr
<b>Cardiology -</b> Dr Christine Fisher Hays, KS	Monthly	<b>Doctors ofc does their own Scheduling</b> 888-625-4699 785-625-4699	<b>Citizens Medical Center</b> 100 E College Dr
<b>Dermatology -</b> Dr Karen Johnson Denver, CO	Monthly	<b>Citizens Medical Ctr</b> 785-460-1223 785-462-7511	<b>Citizens Medical Center</b> 100 E College Dr
<b>Diabetes -</b> Dr Phillips Challans Wichita, KS	Every other Month	<b>Doctor's ofc does their own Scheduling</b> 888-878-5101 316-687-3100	<b>Citizens Medical Center</b> 100 E College Dr
<b>General Surgeon -</b> Dr Charles Frankum Denver, CO	Four/Six times a month	<b>Citizens Medical Ctr</b> 785-460-1223 785-462-7511	<b>Citizens Medical Center</b> 100 E College Dr
<b>Gastroenterology -</b> Dr Jeffrey Huston Denver, CO	Three times a month	<b>Citizens Medical Ctr</b> 785-460-1223 785-462-7511	<b>Citizens Medical Center</b> 100 E College Dr
<b>Gynecology -</b> Dr David Forschner Denver, CO	Once a Month	<b>Citizens Medical Ctr</b> 785-460-1223 785-462-7511	<b>Citizens Medical Center</b> 100 E College Dr
<b>Hematology/Oncology -</b> Dr January Fields Hays, KS	Twice a Month	<b>Doctor's ofc does their own Scheduling</b> 785-623-5774	<b>Citizens Medical Center</b> 100 E College Dr
<b>Hematology/Oncology -</b> Dr Martin Rubinowitz Denver, CO	Once a Month	<b>Citizens Medical Ctr</b> 785-460-1223 785-462-7511 <b>Colby Medical &amp; Surg Ctr</b> 785-462-3332	<b>Citizens Medical Center</b> 100 E College Dr and <b>Colby Medical &amp; Surgical Center</b> 175 S Range Ave
<b>Neurology -</b> Dr Khoi Pham Parker, CO	Once a Month	<b>Citizens Medical Ctr</b> 785-460-1223 785-462-7511 <b>Colby Medical &amp; Surg Ctr</b> 785-462-3332	<b>Citizens Medical Center</b> 100 E College Dr and <b>Colby Medical &amp; Surgical Center</b> 175 S Range Ave
<b>Ophthalmology -</b> Dr William Clifford Garden City, KS	Twice a Month	<b>Doctor's ofc does their own Scheduling</b> 800-526-3937 620-275-7248	<b>Citizens Medical Center</b> 100 E College Dr and <b>Colby Medical &amp; Surgical Center</b> 175 S Range Ave
<b>Ophthalmology -</b> Dr William Keats Denver, CO	Two/Four times a Month	<b>Citizens Medical Ctr</b> 785-460-1223 785-462-7511	<b>Citizens Medical Center</b> 100 E College Dr
<b>Orthopedic - Hays Orthopedic</b> Dr Robert Bassett Hays, KS	Once a Month	<b>Doctor's ofc does their own Scheduling</b> 866-428-8221 785-628-8221	<b>Citizens Medical Center</b> 100 E College Dr
<b>Orthopedic - Western Orthopedic</b> Dr Rajesh Bazaz Denver, CO	Once a Month	<b>Citizens Medical Ctr</b> 785-460-1223 785-462-7511 <b>Colby Medical &amp; Surg Ctr</b> 785-462-3332	<b>Citizens Medical Center</b> 100 E College Dr and <b>Colby Medical &amp; Surgical Center</b> 175 S Range Ave

### Outreach Visiting Clinics -Thomas County KS

<b>SPECIALTY - DR NAME CITY, STATE</b>	<b>SCHEDULE</b>	<b>CONTACT FOR APPOINTMENT</b>	<b>LOCATION OF OUTREACH CLINIC</b>
<b>Orthopedic</b> - Western Orthopedic Dr Timothy Birney Denver, CO	Once a Month	<b>Citizens Medical Ctr</b> 785-460-1223 785-462-7511 <b>Colby Medical &amp; Surg Ctr</b> 785-462-3332	<b>Citizens Medical Center</b> 100 E College Dr and <b>Colby Medical &amp; Surgical Center</b> 175 S Range Ave
<b>Orthopedic</b> - Western Orthopedic Dr Admodios Hatzidakis Denver, CO	Once a Month	<b>Citizens Medical Ctr</b> 785-460-1223 785-462-7511	<b>Citizens Medical Center</b> 100 E College Dr
<b>Orthopedic</b> - Western Orthopedic Dr James Holmes Denver, CO	Once a Month	<b>Citizens Medical Ctr</b> 785-460-1223 785-462-7511	<b>Citizens Medical Center</b> 100 E College Dr
<b>Orthopedic</b> - Western Orthopedic Dr Kevin Nagamani Denver, CO	Once a Month	<b>Citizens Medical Ctr</b> 785-460-1223 785-462-7511 <b>Colby Medical &amp; Surg Ctr</b> 785-462-3332	<b>Citizens Medical Center</b> 100 E College Dr and <b>Colby Medical &amp; Surgical Center</b> 175 S Range Ave
<b>Orthopedic</b> - Western Orthopedic Dr Ted Parks Denver, CO	Once a Month	<b>Citizens Medical Ctr</b> 785-460-1223 785-462-7511 <b>Colby Medical &amp; Surg Ctr</b> 785-462-3332	<b>Citizens Medical Center</b> 100 E College Dr and <b>Colby Medical &amp; Surgical Center</b> 175 S Range Ave
<b>Orthopedic</b> - Hays Orthopedic Dr Vivek Hays, KS	Once a Month	<b>Citizens Medical Ctr</b> 785-460-1223 785-462-7511	<b>Citizens Medical Center</b> 100 E College Dr
<b>Otolaryngology (E/N/T)</b> - Dr Jerold Cossette Salina, KS	Once a Month	<b>Citizens Medical Ctr</b> 785-460-1223 785-462-7511	<b>Citizens Medical Center</b> 100 E College Dr
<b>Plastic Surgery</b> - Dr Conrad Tirre Denver, CO	Once a Month	<b>Citizens Medical Ctr</b> 785-460-1223 785-462-7511 <b>Colby Medical &amp; Surg Ctr</b> 785-462-3332	<b>Citizens Medical Center</b> 100 E College Dr and <b>Colby Medical &amp; Surgical Center</b> 175 S Range Ave
<b>Podiatry</b> - Dr Steven Larsen Hays, KS	Once a Month	<b>Citizens Medical Ctr</b> 785-460-1223 785-462-7511	<b>Citizens Medical Center</b> 100 E College Dr
<b>Podiatry</b> - Dr James Reeves Lawrence, KS	Once a Month	<b>Citizens Medical Ctr</b> 785-460-1223 785-462-7511 <b>Colby Medical &amp; Surg Ctr</b> 785-462-3332	<b>Citizens Medical Center</b> 100 E College Dr and <b>Colby Medical &amp; Surgical Center</b> 175 S Range Ave
<b>Pulmonary</b> - Dr Timothy Kennedy Denver, CO	Once a Month	<b>Citizens Medical Ctr</b> 785-460-1223 785-462-7511	<b>Citizens Medical Center</b> 100 E College Dr
<b>Rheumatology</b> - Dr David Korman Denver, CO	Every other Month	<b>Citizens Medical Ctr</b> 785-460-1223 785-462-7511	<b>Citizens Medical Center</b> 100 E College Dr
<b>Urology</b> - Dr Wallace Curry Hays, KS	Once a Month	<b>Doctor's ofc does their own Scheduling</b> 785-628-6014	<b>Citizens Medical Center</b> 100 E College Dr and <b>Colby Medical &amp; Surgical Center</b> 175 S Range Ave



### **Outreach Visiting Clinics -Thomas County KS**

<b>SPECIALTY - DR NAME CITY, STATE</b>	<b>SCHEDULE</b>	<b>CONTACT FOR APPOINTMENT</b>	<b>LOCATION OF OUTREACH CLINIC</b>
<b>Vascular -</b> Dr Stephen Annest Denver, CO	Once a Month	Doctor's ofc does their own Scheduling 888-626-2657 303-539-0736	<b>Citizens Medical Center</b> 100 E College Dr
<b>Sleep Studies -</b> Somnograph Wichita, KS	Once a Month	Patient's Primary Care Physician will call Citizens Medical Ctr to schedule 785-460-1223 785-462-7511	<b>Citizens Medical Center</b> 100 E College Dr

# **Thomas County Area Health Services Directory**

## **Emergency Numbers**

**Police/Sheriff      911**

**Fire                      911**

**Ambulance            911**

## **Non-Emergency Numbers**

Thomas County Sheriff            462-4570

Thomas County Ambulance        460-4585

**Northwest Area Extension Office**  
105 Experiment Farm Drive Suite 1 (Colby)  
462-7575

### **Municipal Non-Emergency Numbers**

	<b><u>Police/Sheriff</u></b>	<b><u>Fire</u></b>
Colby	460-4454	460-4460
Brewster	460-4454	462-4570
Gem	460-4454	462-4570
Levant	460-4454	462-4570
Rexford	855-2330	462-4570

### **Other Emergency Numbers**

#### **Kansas Child/Adult Abuse and Neglect Hotline**

800-922-5330  
[www.srskansas.org/hotlines.html](http://www.srskansas.org/hotlines.html)

#### **Domestic Violence Hotline**

800-799-7233  
[www.ndvh.org](http://www.ndvh.org)

#### **Emergency Management (Topeka)**

785-274-1409  
[www.accesskansas.org/kdem](http://www.accesskansas.org/kdem)

#### **Federal Bureau of Investigation**

866-483-5137  
[www.fbi.gov/congress/congress01/caruso100301.htm](http://www.fbi.gov/congress/congress01/caruso100301.htm)

#### **Kansas Arson/Crime Hotline**

800-KS-CRIME  
800-572-1763  
[www.accesskansas.org/kbi](http://www.accesskansas.org/kbi)

#### **Kansas Bureau of Investigation (Topeka)**

785-296-8200  
[www.accesskansas.org/kbi](http://www.accesskansas.org/kbi)

#### **Kansas Crisis Hotline (Domestic Violence/Sexual Assault)**

888-END-ABUSE  
[www.kcsdv.org](http://www.kcsdv.org)

#### **Kansas Road Conditions**

866-511-KDOT; or '511' (cell phone use only)  
[www.ksdot.org](http://www.ksdot.org)

#### **Poison Control Center**

800-222-1222  
[www.aapcc.org](http://www.aapcc.org)

#### **Suicide Prevention Hotline**

800-SUICIDE  
<http://hopeline.com>  
800-273-TALK  
[www.suicidepreventionlifeline.com](http://www.suicidepreventionlifeline.com)

#### **Toxic Chemical and Oil Spills**

800-424-8802  
[www.epa.gov/region02/contact.htm](http://www.epa.gov/region02/contact.htm)

### **Health Services**

#### **Hospitals**

##### **Citizens Medical Center**

100 East College Drive (Colby)  
785-462-7511  
[www.nwkshealthcare.com](http://www.nwkshealthcare.com)

##### **Citizens Medical Center Services Include:**

Cardiopulmonary  
Childbirth Classes  
Emergency Room  
Laboratory  
Nursing Services  
Nutrition Counseling  
Pharmacy  
Physical Therapy  
Radiology  
Specialty Clinics  
Speech Therapy  
Swing Bed Nursing

#### **Health Department**

##### **Thomas County Health Department**

350 South Range Avenue, Ste. 2 (Colby)  
460-4596

#### **Mental Health**

##### **High Plains Mental Health Center Colby Branch**

750 South Range Avenue (Colby)  
462-6774  
[www.highplainsmentalhealth.com](http://www.highplainsmentalhealth.com)

##### **Alan Betts (Colby)**

785-625-8844

##### **Mike McVay (Colby)**

785-269-7182

##### **Turning Point (Colby)**

Bill Davis and Jaime Kinderknecht  
866-463-2679

**Heartland Rural Counseling Services**

270 N. Franklin Ave., Ste. C (Colby)  
785-460-7588

**Meier New Life Clinic** (Angie Witman)

CMC Specialty Clinic  
100 E. College Drive (Colby)  
888-725-4642

**New Beginnings** (Colby)

Doug Finley  
785-462-3308

**Medical Professionals****Chiropractors****Duffey Chiropractic Care, Inc.**

320 North Lake Avenue (Colby)  
785-460-3224

**Franz Chiropractic**

135 West 6<sup>th</sup> Street Suite 4 (Colby)  
785-462-7236

**Northwest Kansas Chiropractic**

770 South Range Avenue, Suite 4 (Colby)  
785-460-0332

**Wiley Chiropractic Health Center**

990 S. Range Avenue (Colby)  
785-462-7577

**Specialty Clinics****Citizens Medical Center Specialty Clinic**

100 East College Drive (Colby)  
785-460-1215

**Colby Medical & Surgical Center**

175 S. Range Avenue (Colby)  
785-462-3332

**Dentists****Thomas J. Barlow**

505 North Franklin Avenue, Suite H (Colby)  
785-460-7538

**Blackwood Family Dentistry**

(Quinter) (accepts Medicaid)  
785-754-2441

**Scott G. Haas, DDS**

770 South Range Avenue (Colby)  
785-460-3922

**Rawlins County Dental Clinic**

707 Grant St., Ste. 1 (Atwood) (accepts  
Medicaid)

785-626-8290

**Karen Thummel, DDS**

480 West 4<sup>th</sup> Street (Colby)  
785-460-6800

**Optometrists****Larry Washburn, OD**

665 West 5<sup>th</sup> Street (Colby)  
785-462-6886

**Vision Source**

Jeff Morrison, OD; Mark Wahlmeier, OD  
1005 South Range Avenue (Colby)  
785-462-8231

**Pharmacies****Dillons**

1605 South Range Avenue (Colby)  
785-462-1322  
[www.kroger.com](http://www.kroger.com)

**Palace Drug Store Healthmart**

460 North Franklin Avenue (Colby)  
785-460-7507

**Wal-Mart**

115 West Willow Avenue (Colby)  
785-462-8634  
[www.walmart.com](http://www.walmart.com)

[needymeds.com](http://needymeds.com)

(reduced or free medication assistance)

**Physicians****Citizens Medical Center**

Mekki Saba, M.D., (Orthopaedic Surgeon)  
100 East College Drive (Colby)  
785-460-1215

**Colby Medical & Surgical Center**

175 South Range Avenue (Colby)  
785-462-3332  
[www.colbymedicalandsurgical.com](http://www.colbymedicalandsurgical.com)

**Family Center for Health Care**

310 East College Drive (Colby)  
785-462-6184

**Rehabilitation Services** (physical, occupational and  
speech therapies)

**Citizens Medical Center**

100 E. College Drive (Colby)  
785-460-4868

**Good Samaritan Society of NW Kansas**  
(home care-PT, OT, Speech)  
820 S. Denison St. (St. Francis)  
785-332-3588

**Northwest Kansas Educational Service Center**  
(home care-PT, OT, Speech)  
703 W. 2<sup>nd</sup> (Oakley)  
785-672-3125

**Northwest Kansas Physical Therapy**  
990 South Range Avenue, Suite 8 (Colby)  
785-460-7848

**Tina Harris Physical Therapy & Sports Medicine Center**  
270 North Franklin Avenue (Colby)  
785-462-8008

#### **Other Health Care Services**

##### **Assisted Living/Nursing Homes/LTC**

**Deseret Health & Rehab**  
105 East College Drive (Colby)  
785-462-6721

**Fairview Estates**  
1630 Sewell Avenue (Colby)  
785-462-6721

**Prairie Senior Living Complex**  
1625 South Franklin Avenue  
785-462-8295  
[www.nwkshealthcare.com](http://www.nwkshealthcare.com)

##### **Diabetes**

**Citizens Medical Center**  
100 E. College Drive (Colby)  
785-460-4850

##### **Disability Services**

**LINK** (ages 16-60) (serves Colby/Thomas County)  
(Hays) 800-569-5926

**SKIL of Western Kansas** (serves Colby/Thomas County)  
(Hays) 800-316-8019

**Social & Rehabilitation Services (SRS)**  
1135 S. Country Club Drive (Colby)  
785-462-6769

**Kansas Department on Aging**  
800-432-3535  
[www.agingkansas.org/index.htm](http://www.agingkansas.org/index.htm)

#### **Domestic/Family Violence**

**Child/Adult Abuse Hotline**  
800-922-5330  
<http://www.srskansas.org/services/childprotectiveservices.htm>

**Domestic & Sexual Violence Services**  
(Hays – serves Colby/Thomas County)  
785-625-4202

**General Information – Women’s Shelters**  
[www.WomenShelters.org](http://www.WomenShelters.org)

#### **Food Programs**

**Genesis Food Bank**  
350 S. Range Avenue (Colby)  
785-460-7930

**Prairie Land Food**  
Linda Hagan  
800-298-1989

**WIC** (Colby)  
(contact Thomas County Health Department – 785-460-4596)

#### **Government Healthcare**

**Area Agency on Aging**  
800-432-7422

**Kansas Department on Aging (KDOA)**  
503 S. Kansas Avenue  
Topeka, KS 66603  
785-296-4986 or 800-432-3535  
[www.agingkansas.org/](http://www.agingkansas.org/)

**Kansas Department of Health and Environment (KDHE)**  
Curtis State Office Building  
1000 SW Jackson  
Topeka, KS 66603  
785-296-1500  
[www.kdheks.gov/contact.html](http://www.kdheks.gov/contact.html)

**Medicaid**

Kansas Department of Social & Rehabilitation  
Services (SRS)  
1135 S. Country Club Drive (Colby)  
785-462-6769

**Medicare**

Social Security Administration  
1212 East 27<sup>th</sup> Street  
Hays, KS 67601  
785-625-3496

**Social & Rehabilitation Services (SRS)**

1135 S. Country Club Drive (Colby)  
785-462-6769

**Social Security Administration**

1212 East 27<sup>th</sup> Street  
Hays, KS 67601  
888-552-7176

**Veteran's Affairs**

990 S. Range Avenue (Colby)  
785-462-3572

**Health and Fitness Centers****Citizens Medical Center**

100 E. College Drive (Colby)  
785-460-4868

**Colby Community College**

1255 S. Range Avenue (Colby)  
785-462-3984

**Colby Recreation Department**

285 E. Fifth Street (Colby)  
785-460-4440

**Jump Start Fitness Center**

P.O. Box 85 (Colby)  
785-460-5867

**The Movement Connection**

430 North Franklin Avenue (Colby)  
785-462-2044

**Home Health****Good Samaritan Society of NW Kansas**

820 S. Denison St. (St. Francis)  
785-332-3588

**L&C Home Health Agency**

160 east 2<sup>nd</sup> Street (Colby)  
785-465-7444

**Hospice****Hospice Services, Inc.**

800-315-5122

**Massage Therapy****Citizens Medical Center**

100 E. College Drive (Colby)  
785-460-4868

**Colby Community College**

(PTA/Massage Therapy Program)  
785-462-3984

**Image Makers**

950 S. Range Avenue (Colby)  
785-460-4247

**Massage by Cara**

150 East 5<sup>th</sup> Street (Colby)  
785-462-2860  
[www.massagebycara.net](http://www.massagebycara.net)

**The Movement Connection**

430 N. Franklin Avenue (Colby)  
785-462-2044

**Tina Harris Physical Therapy & Sports  
Medicine  
Center**

270 North Franklin Avenue (Colby)  
785-462-8008

**Uptown Style Salon & Day Spa**

505 East 4<sup>th</sup> Street (Colby)  
785-462-2383  
[www.uptownstyleonline.com](http://www.uptownstyleonline.com)

**Medical Equipment and Supplies****American Medical Sales and Repair**

866-637-6803

**Apria Healthcare** (durable medical  
equipment)

1255 South Country Club Drive (Colby)  
785-462-8661  
[www.apria.com](http://www.apria.com)

**School Nurses****Brewster USD 314**

127 Kansas Avenue  
785-694-2236

**Colby Public Schools USD 315***Elementary School*

210 North Grant Avenue (Colby)  
785-460-5100

*Middle School*

750 West 3<sup>rd</sup> Street (Colby)  
785-460-5200

*High School*  
1890 South Franklin Avenue (Colby)  
785-460-5300  
[www.colbyeagles.org](http://www.colbyeagles.org)

**Golden Plains USD 316**  
*Elementary School*  
210 West 6<sup>th</sup> Street (Selden)  
386-4560  
*Middle/High School*  
335 School Street (Rexford)  
687-3265  
[www.usd316.k12.ks.us.com](http://www.usd316.k12.ks.us.com)

**Heartland Christian School**  
1995 West 4<sup>th</sup> Street (Colby)  
785-460-6419  
[www.hcscolby.org](http://www.hcscolby.org)

**Sacred heart School**  
1150 West 6<sup>th</sup> Street (Colby)  
785-460-2813  
[www.sacredheartcolby.com](http://www.sacredheartcolby.com)

#### **Senior Services**

**Brewster Senior Center**  
327 Kansas Avenue (Brewster)  
785-694-2645

**Senior Progress Center**  
165 Fike Park Street (Colby)  
785-460-2901

**Seniors in Action**  
305 Main Street (Rexford)  
785-687-4646

#### **Veterinary Services**

**Colby Animal Clinic**  
810 East 4<sup>th</sup> Street (Colby)  
785-460-8621  
[www.colbyanimalclinic.com](http://www.colbyanimalclinic.com)

**Swartz Veterinary Hospital**  
1775 West 4<sup>th</sup> Street (Colby)  
785-460-1078

#### **Local Government, Community, and**

#### **Social**

#### **Services**

#### **Adult Protection**

**Adult Protective Services (SRS)**  
800-922-5330

[www.srskansas.org/ISD/ees/adult.htm](http://www.srskansas.org/ISD/ees/adult.htm)

**Elder Abuse Hotline**  
800-842-0078  
[www.elderabusecenter.org](http://www.elderabusecenter.org)

**Kansas Department of Social and  
Rehabilitation  
Services West Region Protection  
Reporting  
Center**  
800-922-5330

#### **Alcohol and Drug Treatment**

Thomas County ADAC  
1675 W. 4<sup>th</sup> Street (Colby)  
785-462-6111  
(Call for local AA and NA meetings)

#### **Child Protection**

**Kansas Department of Social and  
Rehabilitation  
Services West Region Protection  
Reporting  
Center – i.e. PROTECTION REPORT  
CENTER  
FOR ABUSE**  
800-922-5330  
Available 24 hours/7 days per week –  
including  
holidays

#### **Children and Youth**

**Children's Alliance**  
627 Southwest Topeka Boulevard (Topeka)  
785-235-5437  
[www.childally.org](http://www.childally.org)

**Kansas Children's Service League**  
800-332-6378

#### **Community Centers**

**Colby Bowl & Fun Center**  
1175 South Range Avenue (Colby)  
785-460-2672

#### **Crime Prevention**

**Sheriff**  
225 North Court Avenue (Colby)  
785-462-4570

**Day Care Providers-Adult**

**Brewster Senior Center**  
327 Kansas Avenue (Brewster)  
785-694-2645

**Deseret Health & Rehab**  
105 East College Drive (Colby)  
785-462-6721

**Fairview Estates**  
1630 Sewell Avenue (Colby)  
785-462-6721

**Prairie Senior Living Complex**  
1625 South Franklin Avenue  
785-462-8295  
[www.nwkshealthcare.com](http://www.nwkshealthcare.com)

**Senior Progress Center**  
165 Fike Park Street (Colby)  
785-460-2901

**Seniors in Action**  
305 Main Street (Rexford)  
785-687-4646

**Day Care Providers-Children**

**Child Care Aware of Northwest Kansas**  
1255 South Range Avenue (Colby)  
785-460-5482; 877-678-2548

**Head Start NKEsc**  
210 North Grant Avenue (Colby)  
785-462-6067

**Kids Port Group Childcare**  
460 North Garfield Avenue (Colby)  
785-465-9110

**Puddle Duck Preschool**  
520 West 5<sup>th</sup> Street (Colby)  
785-460-2603

**Sacred Heart School**  
1150 West 6<sup>th</sup> Street (Colby)  
785-460-2813  
[www.sacredheartcolby.com](http://www.sacredheartcolby.com)

**Tiny Blessings Daycare**  
480 South Garfield Avenue (Colby)  
460-0880

**Extension Office**

**Northwest Area Extension Office**  
105 Experiment Farm Drive Suite 1 (Colby)  
785-462-7575

**Thomas County Extension Service**

350 S. Range Avenue (Colby)  
785-460-4582

**Funeral Homes**

**Baalman Mortuary**  
190 South Franklin Avenue (Colby)  
785-462-2331

**Kersenbrock Funeral Chapel  
Incorporated**  
745 South Country Club Drive (Colby)  
785-462-7979  
[www.kersenbrockfuneralchapel.com](http://www.kersenbrockfuneralchapel.com)

**Head Start**

**Head Start NKEsc**  
210 North Grant Avenue (Colby)  
785-462-6067

**Housing**

**Colby Housing Authority**  
600 South Mission Ridge Avenue (Colby)  
785-460-6763

**Legal Services**

**Barrett Law Firm**  
280 N. Court Avenue  
P. O. Box 544 (Colby)  
785-460-0188

**Berens Law Firm**  
410 N. Franklin Avenue (Colby)  
785-462-2266

**Flipse & Flipse Law Office**  
390 North Franklin Avenue (Colby)  
785-460-3365

**John D. Gatz**  
505 North Franklin Avenue, Suite A (Colby)  
785-460-3383

**Laurence A. Taylor**  
1480 West 4<sup>th</sup> Street (Colby)  
785-462-6069

**Ronald Shalz**  
1480 W. 4<sup>th</sup> Street (Colby)  
785-462-6736

**Stramel Law Firm**  
480 N. Franklin Avenue (Colby)  
785-460-3222

**Calvin Williams**



280 N. Court (Colby)  
785-460-9777

Manhattan  
785-539-7935  
800-727-2785

#### **Libraries, Parks and Recreation**

**Colby Bowl & Fun Center**  
1175 South Range Avenue (Colby)  
785-460-2672  
**City Recreation Department**  
285 East 5<sup>th</sup> Street (Colby)  
785-460-4440

**Pioneer Memorial Library**  
375 West 4<sup>th</sup> Street (Colby)  
785-460-4470  
[www.colbylibrary.com](http://www.colbylibrary.com)

#### **Pregnancy Services**

**Catholic Charities**  
350 S. Range Ave., Ste. 3 (Colby)  
785-462-3022

**Emergency Pregnancy Services**  
350 South Range Avenue (Colby)  
785-462-3022

**Kansas Children's Service League**  
877-530-5275  
[www.kcsl.org](http://www.kcsl.org)

#### **Public Information**

**Colby Visitors Center**  
2015 South Range Avenue (Colby)  
460-0076

#### **Thomas County/Colby Kansas Courthouse**

300 North Court Avenue (Colby)  
460-4540  
[www.Thomascounty.us](http://www.Thomascounty.us)

#### **Rape**

**Domestic & Sexual Violence Services**  
(Hays – serves Colby/Thomas County)  
785-625-4202

**Domestic Violence and Rape Hotline**  
888-874-1499

**Family Crisis Center**  
1806 12<sup>th</sup> Street (Great Bend)  
785-793-1885

**Kansas Crisis Hotline**

#### **Red Cross**

**Red Cross**  
350 South Range Avenue (Colby)  
785-462-7161  
[www.redcross.org](http://www.redcross.org)

#### **Social Security**

**Social Security Administration**  
800-772-1213  
800-325-0778  
[www.ssa.gov](http://www.ssa.gov)

#### **Transportation**

**Colby Cab**  
785-462-TAXI (-8294)

**General Public Transportation**  
165 Fike Park Street (Colby)  
785-443-9208

**State and National Information, Services,  
Support**

**Adult Protection**

**Adult Protection Services**

1-800-922-5330

[www.srskansas.org/SD/ees/adult.htm](http://www.srskansas.org/SD/ees/adult.htm)

**Domestic Violence and Sexual Assault  
(DVACK)**

1-800-874-1499

[www.dvack.org](http://www.dvack.org)

**Elder Abuse Hotline**

800-842-0078

[www.elderabusecenter.org](http://www.elderabusecenter.org)

**Elder and Nursing Home Abuse Legal**

[www.resource4nursinghomeabuse.com/index.html](http://www.resource4nursinghomeabuse.com/index.html)

**Kansas Coalition Against Sexual and  
Domestic Violence**

1-888-END-ABUSE (363-2287)

[www.kcsdv.org/ksresources.html](http://www.kcsdv.org/ksresources.html)

**Kansas Department on Aging  
Adult Care Complaint Program**

1-800-842-0078

**National Center on Elder Abuse**

(Administration on Aging)

[www.ncea.gov/NCEARoot/Main\\_Site?Find\\_Help/Help\\_Hotline.aspx](http://www.ncea.gov/NCEARoot/Main_Site?Find_Help/Help_Hotline.aspx)

**National Domestic Violence Hotline**

1-800-799-SAFE (799-7233)

1-800-787-3224 (TTY)

[www.ndvh.org](http://www.ndvh.org)

**National Sexual Assault Hotline**

1-800-994-9662

1-888-220-5416 (TTY)

[www.4woman.gov/faq/sexualassault.htm](http://www.4woman.gov/faq/sexualassault.htm)

**National Suicide Prevention Lifeline**

1-800-273-8255

**Poison Center**

1-800-222-1222

**Sexual Assault and Domestic Violence  
Crisis Line**

1-800-701-3630

**Social and Rehabilitation Services  
(SRS)**

1-888-369-4777 (HAYS)

[www.srskansas.org](http://www.srskansas.org)

**Suicide Prevention Helpline**

1-785-841-2345

**Alcohol and Drug Treatment Programs**

**A 1 A Detox Treatment**

1-800-757-0771

**AAAAAH**

1-800-993-3869

**Abandon A Addiction**

1-800-405-4810

**Able Detox-Rehab Treatment**

1-800-577-2481 (NATIONAL)

**Abuse Addiction Agency**

1-800-861-1768

[www.thewatershed.com](http://www.thewatershed.com)

**AIC (Assessment Information Classes)**

1-888-764-5510

**Al-Anon Family Group**

1-888-4AL-ANON (425-2666)

[www.al-anon.alateen.org](http://www.al-anon.alateen.org)

**Alcohol and Drug Abuse Hotline**

800-ALCOHOL

**Alcohol and Drug Abuse Services**

800-586-3690

[http://www.srskansas.org/services/alcohol\\_drug\\_assess.htm](http://www.srskansas.org/services/alcohol_drug_assess.htm)

**Alcohol and Drug Addiction Treatment  
Programs**

1-800-510-9435

**Alcohol and Drug Helpline**

1-800-821-4357

**Alcoholism/Drug Addiction Treatment  
Center**

800-477-3447

**Kansas Alcohol and Drug Abuse  
Services Hotline**

800-586-3690

[http://www.srskansas.org/services/alcohol\\_drug\\_assess.htm](http://www.srskansas.org/services/alcohol_drug_assess.htm)

**Mothers Against Drunk Driving**

1-800-GET-MADD (438-6233)

[www.madd.org](http://www.madd.org)

**National Council on Alcoholism and  
Drug Dependence, Inc.**

1-800-NCA-CALL (622-2255)

[www.ncadd.org](http://www.ncadd.org)

**Recovery Connection**  
[www.recoveryconnection.org](http://www.recoveryconnection.org)

**Regional Prevention Centers of Kansas**  
1-800-757-2180  
[www.smokyhillfoundation.com/rpc-locate.html](http://www.smokyhillfoundation.com/rpc-locate.html)

### **Better Business Bureau**

**Better Business Bureau**  
328 Laura (Wichita)  
316-263-3146  
<http://www.wichita.bbb.org>

### **Children and Youth**

**Adoption**  
800-862-3678  
<http://www.adopt.org/>

**Boys and Girls Town National Hotline**  
1-800-448-3000  
[www.girlsandboystown.org](http://www.girlsandboystown.org)

**Child/Adult Abuse and Neglect Hotline**  
800-922-5330  
<http://www.srskansas.org/>

**Child Abuse Hotline**  
1-800-922-5330

**Child Abuse National Hotline**  
800-422-4453  
800-222-4453 (TDD)  
<http://www.childhelpusa.org/home>

**Child Abuse National Hotline**  
1-800-4-A-CHILD (422-4453)  
[www.childabuse.com](http://www.childabuse.com)

**Child Find of America**  
1-800-426-5678

**Child Help USA National Child Abuse Hotline**  
1-800-422-4453

**Child Protective Services**  
800-922-5330  
[www.srskansas.org/services/child\\_protective\\_services.htm](http://www.srskansas.org/services/child_protective_services.htm)

**HealthWave**  
P.O. Box 3599  
Topeka, KS 66601

1-800-792-4884  
1-800-792-4292 (TTY)  
[www.kansashealthwave.org](http://www.kansashealthwave.org)

**Heartspring (Institute of Logopedics)**  
8700 E. 29<sup>TH</sup> North  
Wichita, KS 67226  
[www.heartspring.org](http://www.heartspring.org)

**Kansas Big Brothers/Big Sisters**  
1-888-KS4-BIGS  
[www.kbbbs.org](http://www.kbbbs.org)

**Kansas Children's Service League (Hays)**  
785-625-2244  
1-877-530-5275  
[www.kcsl.org](http://www.kcsl.org)

**Kansas Department of Health and Environment**  
785-296-1500  
[www.kdheks.gov](http://www.kdheks.gov)  
e-mail: [info@kdheks.gov](mailto:info@kdheks.gov)

**Kansas Society for Crippled Children**  
106 W. Douglas, Suite 900  
Wichita, KS 67202  
1-800-624-4530  
316-262-4676  
[www.kssociety.org](http://www.kssociety.org)

**National Runaway Switchboard**  
1-800-RUNAWAY  
[www.1800runaway.org/](http://www.1800runaway.org/)

**National Society for Missing and Exploited Children**  
1-800-THE-LOST (843-5678)  
[www.missingkids.com](http://www.missingkids.com)

**Parents Anonymous Help Line**  
800-345-5044  
<http://www.parentsanonymous.org/paIndex10.html>

**Runaway Line**  
800-621-4000  
800-621-0394 (TDD)  
<http://www.1800runaway.org/>

**Talking Books**  
800-362-0699  
[http://skyways.lib.ks.us/KSL/talking/ksl\\_bph.html](http://skyways.lib.ks.us/KSL/talking/ksl_bph.html)

## **Community Action**

**Peace Corps**  
800-424-8580  
[www.peacecorps.gov](http://www.peacecorps.gov)

**Public Affairs Hotline (Kansas Corporation Commission)**  
800-662-0027  
[www.kcc.state.ks.us](http://www.kcc.state.ks.us)

## **Counseling**

**Care Counseling**  
Family counseling services for Kansas and Missouri  
1-888-999-2196

**Carl Feril Counseling**  
608 North Exchange (St. John)  
620-549-6411

**Castlewood Treatment Center for Eating Disorders**  
1-888-822-8938  
[www.castlewoodtc.com](http://www.castlewoodtc.com)

**Catholic Charities**  
1-888-468-6909  
[www.catholiccharitiessalina.org](http://www.catholiccharitiessalina.org)

**Center for Counseling**  
5815 West Broadway (Great Bend)  
800-875-2544

**Central Kansas Mental Health Center**  
1-800-794-8281  
Will roll over after hours to a crisis number.

**Consumer Credit Counseling Services**  
800-279-2227  
<http://www.kscacs.org/>

**Kansas Problem Gambling Hotline**  
866-662-3800  
<http://www.ksmhc.org/Services/gambling>

**National Hopeline Network**  
1-800-SUICIDE (785-2433)  
[www.hopeline.com](http://www.hopeline.com)

**National Problem Gambling Hotline**  
1-800-552-4700  
[www.npgaw.org](http://www.npgaw.org)

**Samaritan Counseling Center**  
1602 N. Main Street  
Hutchinson, KS 67501  
620-662-7835  
<http://cmc.pdswebpro.com/>

**Self-Help Network of Kansas**  
1-800-445-0116  
[www.selfhelpnetwork.wichita.edu](http://www.selfhelpnetwork.wichita.edu)

**Senior Health Insurance Counseling**  
1-800-860-5260  
[www.agingkansas.org](http://www.agingkansas.org)

**Sunflower Family Services, Inc.**  
(adoption, crisis pregnancy, conflict solution center)  
1-877-457-5437  
[www.sunflowerfamily.org](http://www.sunflowerfamily.org)

## **Disability Services**

**American Association of People with Disabilities (AAPD)**  
[www.aapd.com](http://www.aapd.com)

**American Council for the Blind**  
1-800-424-8666  
[www.acb.org](http://www.acb.org)

**Americans with Disabilities Act Information Hotline**  
1-800-514-0301  
1-800-514-0383 (TTY)  
[www.ada.gov](http://www.ada.gov)

**Disability Advocates of Kansas, Incorporated**  
1-866-529-3824  
[www.disabilitysecrets.com](http://www.disabilitysecrets.com)

**Disability Group, Incorporated**  
1-888-236-3348  
[www.disabilitygroup.com](http://www.disabilitygroup.com)

**Disability Rights Center of Kansas (DRC)**  
Formerly Kansas Advocacy & Protective Services  
1-877-776-1541  
1-877-335-3725 (TTY)  
[www.drckansas.org](http://www.drckansas.org)

**Hearing Healthcare Associates**  
800-448-0215

**Kansas Commission for the Deaf and Hearing Impaired**  
1-800-432-0698  
[www.srskansas.org/kcdhh](http://www.srskansas.org/kcdhh)

**Kansas Relay Center** (Hearing Impaired service)  
1-800-766-3777  
[www.kansasrelay.com](http://www.kansasrelay.com)

**National Center for Learning  
Disabilities**

1-888-575-7373  
[www.ncld.org](http://www.ncld.org)

**National Library Services for Blind &  
Physically Handicapped**  
[www.loc.gov/nls/](http://www.loc.gov/nls/)  
1-800-424-8567

**Parmelee Law Firm**  
8623 East 32<sup>nd</sup> Street North Suite 100  
(Wichita)  
877-267-6300

**Environment**

**Environmental Protection Agency**  
1-800-223-0425  
913-321-9516 (TTY)  
[www.epa.gov](http://www.epa.gov)

**Kansas Department of Health and  
Environment**  
Salina 785-827-9639  
Hays 785-625-5663  
Topeka 785-296-1500  
[www.kdheks.gov](http://www.kdheks.gov)

**Food and Drug**

**Center for Food Safety and Applied  
Nutrition**  
1-888-SAFEFOOD (723-3366)  
[www.cfsan.fda.gov/](http://www.cfsan.fda.gov/)  
[www.healthfinder.gov/docs/doc03647.htm](http://www.healthfinder.gov/docs/doc03647.htm)

**US Consumer Product Safety  
Commission**  
800-638-2772  
800-638-8270 (TDD)  
[www.cpsc.gov](http://www.cpsc.gov)

**USDA Meat and Poultry Hotline**  
1-888-674-6854  
1-800-256-7072 (TTY)  
[www.fsis.usda.gov/](http://www.fsis.usda.gov/)

**U.S. Food and Drug Administration**  
1-888-INFO-FDA  
1-888-463-6332  
[www.fsis.usda.gov/](http://www.fsis.usda.gov/)

**Poison Hotline**  
1-800-222-1222

**Health Services**

**AIDS/HIV Center for Disease Control  
and Prevention**  
800-CDC-INFO  
888-232-6348 (TTY)  
<http://www.cdc.gov/hiv/>

**AIDS/STD National Hot Line**  
800-342-AIDS  
800-227-8922 (STD line)

**American Health Assistance Foundation**  
800-437-2423  
[www.ahaf.org](http://www.ahaf.org)

**American Heart Association**  
800-242-8721  
[www.americanheart.org](http://www.americanheart.org)

**American Lung Association**  
800-586-4872

**American Stroke Association**  
1-888-4-STROKE  
[www.american heart.org](http://www.americanheart.org)

**Center for Disease Control and  
Prevention**  
800-CDC-INFO  
888-232-6348 (TTY)  
<http://www.cdc.gov/hiv/>

**Elder Care Helpline**  
[www.eldercarelink.com](http://www.eldercarelink.com)

**Eye Care Council**  
800-960-EYES  
[www.seetolearn.com](http://www.seetolearn.com)

**Kansas Foundation for Medical Care**  
800-432-0407  
[www.kfmc.org](http://www.kfmc.org)

**National Health Information Center**  
800-336-4797  
[www.health.gov/nhic](http://www.health.gov/nhic)

**National Cancer Information Center**  
800-227-2345  
866-228-4327 (TTY)  
[www.cancer.org](http://www.cancer.org)

**National Institute on Deafness and  
Other Communication Disorders  
Information**  
Clearinghouse  
800-241-1044  
800-241-1055 (TTY)  
[www.nidcd.nih.gov](http://www.nidcd.nih.gov)

## **Hospice**

**Hospice-Kansas Association**  
800-767-4965

**Kansas Hospice and Palliative Care Organization**  
888-202-5433  
[www.lifeproject.org/akh.htm](http://www.lifeproject.org/akh.htm)

**Southwind Hospice, Incorporated**  
[www.southwindhospice.com](http://www.southwindhospice.com)  
785-483-3161

## **Housing**

**Kansas Housing Resources Corporation**  
785-296-2065  
[www.housingcorp.org](http://www.housingcorp.org)

**US Department of Housing and Urban Development**  
Kansas Regional Office  
913-551-5462

## **Legal Services**

**Kansas Attorney General**  
800-432-2310 (Consumer Protection)  
800-828-9745 (Crime Victims' Rights)  
800-766-3777 (TTY)  
<http://www.ksag.org/>

**Kansas Bar Association**  
785-234-5696  
[www.ksbar.org](http://www.ksbar.org)

**Kansas Department on Aging**  
800-432-3535  
[www.agingkanssas.org/index.htm](http://www.agingkanssas.org/index.htm)

**Kansas Legal Services**  
800-723-6953  
[www.kansaslegalservices.org](http://www.kansaslegalservices.org)

## **Aging**

**Southwest Kansas Area Agency on Aging**  
240 San Jose Drive  
Dodge City, KS 67801  
(316) 225-8230  
<http://www.swkaaa.org/>

## **Medicaid Services**

**First Guard**  
888-828-5698  
[www.firstguard.com](http://www.firstguard.com)

**Kansas Health Wave**  
800-792-4884 or 800-792-4292 (TTY)  
[www.kansashealthwave.org](http://www.kansashealthwave.org)

**Kansas Medical Assistance Program**  
Customer Service  
800-766-9012  
[www.kmpa-state-ks.us/](http://www.kmpa-state-ks.us/)

**Medicare Information**  
800-MEDICARE  
[www.medicare.gov](http://www.medicare.gov)

**U.S. Department of Health and Human Services**  
Centers for Medicare and Medicaid Services  
800-MEDICARE (800-633-4227) or  
877-486-2048 (TTY)  
[www.cms.hhs.gov](http://www.cms.hhs.gov)

## **Mental Health Services**

**Alzheimer's Association**  
1-800-272-3900 or 1-866-403-3073 (TTY)  
[www.alz.org](http://www.alz.org)

**Developmental Services of Northwest Kansas**  
1-800-637-2229

**Kansas Alliance for Mentally Ill** (Topeka, KS)  
785-233-0755  
[www.namikansas.org](http://www.namikansas.org)

**Make a Difference**  
1-800-332-6262

**Mental Health America**  
1-800-969-6MHA (969-6642)

**National Alliance for the Mentally Ill Helpline**  
1-800-950-NAMI (950-6264) or 703-516-7227 (TTY)  
[www.nami.org](http://www.nami.org)

**National Institute of Mental Health**  
1-866-615-6464 or 1-866-415-8051 (TTY)  
[www.nimh.nih.gov](http://www.nimh.nih.gov)

**National Library Services for Blind and Physically Handicapped**  
1-800-424-8567  
[www.loc.gov/nls/music/index.html](http://www.loc.gov/nls/music/index.html)

**National Mental Health Association**  
800-969-6642  
800-433-5959 (TTY)  
[www.nmha.org](http://www.nmha.org)

**State Mental Health Agency**  
KS Department of Social and Rehabilitation  
Services  
915 SW Harrison Street  
Topeka, KS 66612  
785-296-3959  
[www.srskansas.org](http://www.srskansas.org)

**Suicide Prevention Hotline**  
1-800-SUICIDE [784-2433]  
[www.hopeline.com](http://www.hopeline.com)

### **Nutrition**

**American Dietetic Association**  
1-800-877-1600  
[www.eatright.org](http://www.eatright.org)

**American Dietetic Association  
Consumer Nutrition Hotline**  
800-366-1655

**Department of Human Nutrition**  
Kansas State University  
119 Justin Hall  
Manhattan, KS 66506  
785-532-5500  
[www.humec.k-state.edu/hn/](http://www.humec.k-state.edu/hn/)

**Eating Disorders Awareness and  
Prevention**  
1-800-931-2237  
[www.nationaleatingdisorders.org](http://www.nationaleatingdisorders.org)

**Food Stamps**  
Kansas Department of Social and  
Rehabilitation Services (SRS)  
1-888-369-4777 or Local SRS office  
[www.srskansas.org/ISD/ees/food\\_stamps](http://www.srskansas.org/ISD/ees/food_stamps)

**Kansas Department of Health and  
Environment**  
1000 SW Jackson, Suite 220  
Topeka, KS 66612  
785-296-1320  
[www.kdheks.gov/news-wic/index.html](http://www.kdheks.gov/news-wic/index.html)

### **Road and Weather Conditions**

**Kansas Road Conditions**  
866-511-KDOT; or '511' (cell phone use  
only)  
<http://kdot1.ksdot.org/divplanning/roadrpt/>

### **Senior Services**

**Alzheimer's Association**  
1-800-487-2585

**American Association of Retired  
Persons (AARP)**  
1-888-OUR-AARP (687-2277)  
[www.aarp.org](http://www.aarp.org)

**Americans with Disabilities Act  
Information Line**  
1-800-514-0301 or 1-800-514-0383 [TTY]  
[www.usdoj.gov/crt/ada](http://www.usdoj.gov/crt/ada)

**American Association of Retired  
Persons**  
888-687-2277  
[www.aarp.org](http://www.aarp.org)

**Area Agency on Aging**  
800-432-2703

**Eldercare Locator**  
1-800-677-1116  
[www.eldercare.gov/eldercare/public/home](http://www.eldercare.gov/eldercare/public/home)

**Home Buddy**  
1-866-922-8339  
[www.homebuddy.org](http://www.homebuddy.org)

**Home Health Complaints**  
Kansas Department of Social and  
Rehabilitation Services (SRS)  
1-800-842-0078

**Kansas Advocates for Better Care Inc.**  
Consumer Information  
1-800-525-1782  
[www.kabc.org](http://www.kabc.org)

**Kansas Department on Aging**  
1-800-432-3535 or 785-291-3167 (TTY)  
[www.agingkansas.org/index.htm](http://www.agingkansas.org/index.htm)

**Kansas Foundation for Medical Care,  
Inc.**  
Medicare Beneficiary Information  
1-800-432-0407

**Kansas Tobacco Use Quitline**  
1-866-KAN-STOP (526-7867)  
[www.kdheks.gov/tobacco/cessation.html](http://www.kdheks.gov/tobacco/cessation.html)

**Older Kansans Employment Programs  
(OKEP)**  
785-296-7842  
[www.kansascommerce.com](http://www.kansascommerce.com)

**Older Kansans Hotline**  
800-742-9531

**Older Kansans Information Reference  
Sources on Aging (OKIRSA)**  
1-800-432-3535

**Senior Health Insurance Counseling for Kansas**

1-800-860-5260

[www.agingkansas.org/SHICK/shick\\_index](http://www.agingkansas.org/SHICK/shick_index)

**SHICK**

1-800-860-5260

[www.agingkansas.org/SHICK](http://www.agingkansas.org/SHICK)

**Social Security Administration**

785-296-3959 or 785-296-1491 (TTY)

[www.srskansas.org](http://www.srskansas.org)

**SRS Rehabilitation Services Kansas**

785-296-3959

785-296-1491 (TTY)

[www.srskansas.org](http://www.srskansas.org)

**Suicide Prevention**

**Suicide Prevention Services**

800-784-2433

[www.spsfv.org](http://www.spsfv.org)

**Veterans**

**Federal Information Center**

1-800-333-4636

[www.FirstGov.gov](http://www.FirstGov.gov)

**U.S. Department of Veterans Affairs**

1-800-513-7731

[www.kcva.org](http://www.kcva.org)

**Education (GI Bill)**

1-888-442-4551

**Health Resource Center**

877-222-8387

**Insurance Center**

800-669-8477

**Veteran Special Issue Help Line**

Includes Gulf War/Agent Orange

Helpline

800-749-8387

**Affairs U.S. Department of Veterans**

202-273-5400

**Mammography Helpline**

888-492-7844

**Other Benefits**

800-827-1000

**Memorial Program Service**

[includes status of headstones and markers]

800-697-6947

**Telecommunications Device for the Deaf/Hearing Impaired**

800-829-4833 (TTY)

[www.vba.va.gov](http://www.vba.va.gov)

**Veterans Administration**

**Veterans Administration Benefits**

800-669-8477

**Life Insurance**

800-669-8477

**Education (GI Bill)**

888-442-4551

**Health Care Benefits**

877-222-8387

**Income Verification**

**and Means Testing**

800-929-8387

**Mammography Helpline**

888-492-7844

**Gulf War/Agent Orange**

**Helpline**

800-749-8387

**Status of Headstones**

**and Markers**

800-697-6947

**Telecommunications**

**Device for the Deaf**

800-829-4833

[www.vba.va.gov](http://www.vba.va.gov)

**Benefits Information**

**and Assistance**

800-827-1000

**Debt Management**

800-827-0648

**Life Insurance**

**Information and Service**

800-669-8477

**Welfare Fraud Hotline**

**Welfare Fraud Hotline**

800-432-3913





1000 SW Jackson, Suite 340  
Topeka, KS 66612-1365  
785-296-1200  
<http://www.kdheks.gov/olrh>

Kansas Department of Health and Environment

**BUREAU OF COMMUNITY HEALTH SYSTEMS**

Jane Shirley, Director Local Health Program  
1000 SW Jackson, Suite 340, Topeka, KS 66801  
Office phone – 785-296-6549  
Cell phone – 785-215-5522  
E-mail address – [jshirley@kdheks.gov](mailto:jshirley@kdheks.gov)

Linda Frazee, PH Workforce Development Specialist  
1000 SW Jackson, Suite 340, Topeka, KS 66801  
Office phone – 785-296-3641  
Cell phone – 785-231-4504  
E-mail address – [lfrazee@kdheks.gov](mailto:lfrazee@kdheks.gov)

---

**Thomas County Health Department**

350 S Range Avenue, Suite 2

Colby KS 67701-2901

**Phone:** 785-460-4596

**FAX:** 785-460-4595

**E-mail:** [findir@thomascohealth.com](mailto:findir@thomascohealth.com)

**Administrator:**

Kasiah Rothchild

**Health Officer**

J Steven Bear, MD

**Medical Consultant:**

J Steven Bear, MD

---

785-296-1200

## **V. Detail Exhibits**

---

**[VVV Research & Development INC]**

---

## Patient Origin & Access

**[VVV Research & Development INC]**



### Citizens Medical Center - Colby, KS

PO101E-2008  
Annual

#### Discharges by Major Service, Age, and Patient County of Residence

County	Total Discharges		Pediatric		Age 18 - 44		Age 45 - 64		Age 65 - 74		Age 75 +		Psychiatric		Obstetric		Newborn		Surg
	Cases	Pct	Cases	Pct	Cases	Pct	Cases	Pct	Cases	Pct	Cases	Pct	Cases	Pct	Cases	Pct	Cases	Pct	
Thomas, KS	761	67.0	47	6.2	70	9.2	112	14.7	78	10.2	268	35.2	4	0.5	97	12.7	85	11.2	8.3
Sherman, KS	97	8.5	4	4.1	0		14	14.4	21	21.6	12	12.4	0		24	24.7	22	22.7	22.7
Logan, KS	72	6.3	2	2.8	5	6.9	6	8.3	14	19.4	17	23.6	0		15	20.8	13	18.1	8.3
Sheridan, KS	54	4.8	2	3.7	1	1.9	10	18.5	4	7.4	21	38.9	0		8	14.8	8	14.8	14.8
Rawlins, KS	53	4.7	1	1.9	0		6	11.3	7	13.2	14	26.4	0		13	24.5	12	22.6	15.1
Cheyenne, KS	23	2.0	2	8.7	0		1	4.3	5	21.7	4	17.4	0		6	26.1	5	21.7	39.1
Gove, KS	15	1.3	0		0		2	13.3	1	6.7	6	40.0	0		3	20.0	3	20.0	20.0
Decatur, KS	8	0.7	1	12.5	1	12.5	1	12.5	0		4	50.0	0		1	12.5	0		37.5
Graham, KS	7	0.6	0		2	28.6	0		1	14.3	0		0		2	28.6	2	28.6	28.6
Wallace, KS	7	0.6	1	14.3	0		2	28.6	0		2	28.6	0		1	14.3	1	14.3	28.6
Other Counties	39	3.4	2	5.1	8	20.5	6	15.4	10	25.6	7	17.9	0		4	10.3	2	5.1	10.3
Hospital Total	1,136	100.0	62	5.5	87	7.7	160	14.1	141	12.4	355	31.3	4	0.4	174	15.3	153	13.5	11.4



### Citizens Medical Center - Colby, KS

PO101E-2009  
Annual

#### Discharges by Major Service, Age, and Patient County of Residence

County	Total Discharges		Pediatric		Age 18 - 44		Age 45 - 64		Age 65 - 74		Age 75 +		Psychiatric		Obstetric		Newborn		Surg
	Cases	Pct	Cases	Pct	Cases	Pct	Cases	Pct	Cases	Pct	Cases	Pct	Cases	Pct	Cases	Pct	Cases	Pct	
Thomas, KS	605	65.4	38	6.3	58	9.6	96	15.9	69	11.4	206	34.0	5	0.8	70	11.6	63	10.4	6.0
Logan, KS	69	7.5	5	7.2	5	7.2	4	5.8	10	14.5	22	31.9	0		12	17.4	11	15.9	5.8
Sherman, KS	68	7.4	4	5.9	3	4.4	14	20.6	7	10.3	14	20.6	0		13	19.1	13	19.1	7.4
Rawlins, KS	60	6.5	5	8.3	2	3.3	3	5.0	7	11.7	15	25.0	0		14	23.3	14	23.3	13.3
Sheridan, KS	43	4.6	1	2.3	1	2.3	6	14.0	6	14.0	13	30.2	0		8	18.6	8	18.6	11.6
Cheyenne, KS	24	2.6	1	4.2	1	4.2	5	20.8	2	8.3	6	25.0	0		4	16.7	5	20.8	50.0
Graham, KS	9	1.0	0		2	22.2	3	33.3	1	11.1	0		0		2	22.2	1	11.1	55.6
Gove, KS	8	0.9	0		0		2	25.0	0		4	50.0	0		1	12.5	1	12.5	12.5
Decatur, KS	7	0.8	0		0		1	14.3	0		0		0		3	42.9	3	42.9	
Other Counties	32	3.5	3	9.4	4	12.5	12	37.5	5	15.6	3	9.4	2	6.3	2	6.3	1	3.1	9.4
Hospital Total	925	100.0	57	6.2	76	8.2	146	15.8	107	11.6	283	30.6	7	0.8	129	13.9	120	13.0	8.5



### Citizens Medical Center - Colby, KS

PO101E-2010  
Annual

#### Discharges by Major Service, Age, and Patient County of Residence

County	Total Discharges		Pediatric		Age 18 - 44		Age 45 - 64		Age 65 - 74		Age 75 +		Psychiatric		Obstetric		Newborn		Surg
	Cases	Pct	Cases	Pct	Cases	Pct	Cases	Pct	Cases	Pct	Cases	Pct	Cases	Pct	Cases	Pct	Cases	Pct	
Thomas, KS	419	64.3	19	4.5	25	6.0	59	14.1	42	10.0	145	34.6	6	1.4	64	15.3	59	14.1	7.6
Logan, KS	51	7.8	1	2.0	3	5.9	5	9.8	0		11	21.6	1	2.0	15	29.4	15	29.4	27.5
Sherman, KS	43	6.6	2	4.7	3	7.0	2	4.7	9	20.9	3	7.0	0		12	27.9	12	27.9	20.9
Rawlins, KS	36	5.5	2	5.6	1	2.8	4	11.1	0		7	19.4	0		11	30.6	11	30.6	25.0
Sheridan, KS	26	4.0	0		0		2	7.7	0		7	26.9	1	3.8	8	30.8	8	30.8	34.6
Cheyenne, KS	15	2.3	1	6.7	1	6.7	2	13.3	1	6.7	2	13.3	0		4	26.7	4	26.7	26.7
Decatur, KS	13	2.0	0		0		1	7.7	0		3	23.1	0		5	38.5	4	30.8	23.1
Graham, KS	6	0.9	0		0		0		0		0		0		3	50.0	3	50.0	16.7
Other Counties	43	6.6	0		13	30.2	8	18.6	2	4.7	8	18.6	2	4.7	5	11.6	5	11.6	18.6
Hospital Total	652	100.0	25	3.8	46	7.1	83	12.7	54	8.3	186	28.5	10	1.5	127	19.5	121	18.6	13.7



## Thomas County - KS Residents

PO103E - 2008  
Annual

### Discharges by Hospital, Age, and Major Service

Hospital	Total Discharges		Pediatric		Adult Medical/Surgical										Psychiatric		Obstetric		Newborn		Pct Surg
	Cases	Pct	Age 0 - 17		Age 18 - 44		Age 45 - 64		Age 65 - 74		Age 75 +		Cases	Pct	Cases	Pct	Cases	Pct			
Citizens Medical Cntr-Colby KS	761	57.8	47	6.2	70	9.2	112	14.7	78	10.2	268	35.2	4	0.5	97	12.7	85	11.2	8.3		
Hays Medical Center - KS	143	10.9	5	3.5	13	9.1	31	21.7	22	15.4	45	31.5	0		15	10.5	12	8.4	49.0		
Presbytrn/St Luke MC-Denver CO	105	8.0	1	1.0	13	12.4	25	23.8	34	32.4	24	22.9	1	1.0	4	3.8	3	2.9	75.2		
Logan County Hosp-Oakley KS	52	4.0	1	1.9	4	7.7	16	30.8	10	19.2	21	40.4	0		0		0				
Wesley Medical Cntr-Wichita KS	32	2.4	5	15.6	6	18.8	10	31.3	3	9.4	7	21.9	0		1	3.1	0		40.6		
St Catherine Hsp-Garden Cty KS	26	2.0	2	7.7	2	7.7	4	15.4	2	7.7	3	11.5	8	30.8	3	11.5	2	7.7	23.1		
Via Christi Rgnl MC-Wichita KS	21	1.6	0		9	42.9	4	19.0	0		7	33.3	1	4.8	0		0		23.8		
St Joseph Hospital-Denver CO	19	1.4	0		3	15.8	6	31.6	5	26.3	5	26.3	0		0		0		42.1		
Swedish Med Cntr-Englewood CO	17	1.3	1	5.9	6	35.3	3	17.6	4	23.5	3	17.6	0		0		0		29.4		
Rawlins Cty Hlth Ctr-Atwood KS	15	1.1	0		1	6.7	3	20.0	3	20.0	8	53.3	0		0		0				
Salina Regional Hlth Center-KS	13	1.0	0		0		2	15.4	1	7.7	4	30.8	6	46.2	0		0		30.8		
Gove County Med Ctr-Quinter KS	12	0.9	1	8.3	1	8.3	0		0		3	25.0	0		3	25.0	4	33.3	16.7		
Childrens Hosp Assoc-Denver CO	11	0.8	11	100.0	0		0		0		0		0		0		0		27.3		
Sheridan Cnty H Cmplx-Hoxie KS	10	0.8	0		4	40.0	0		1	10.0	5	50.0	0		0		0				
Univ of Kansas Hospital-KC KS	10	0.8	1	10.0	1	10.0	4	40.0	4	40.0	0		0		0		0		60.0		
Goodland Regional Med Cntr-KS	9	0.7	0		1	11.1	0		2	22.2	4	44.4	0		1	11.1	1	11.1			
Salina Surgical Hospital - KS	7	0.5	0		1	14.3	3	42.9	1	14.3	2	28.6	0		0		0		100.0		
Morton County HS-Elkhart KS	5	0.4	0		0		1	20.0	0		4	80.0	0		0		0				
Other Hospitals	48	3.6	2	4.2	6	12.5	7	14.6	8	16.7	12	25.0	7	14.6	3	6.3	3	6.3	27.1		
Total	1,316	100.0	77	5.9	141	10.7	231	17.6	178	13.5	425	32.3	27	2.1	127	9.7	110	8.4	21.6		



## Thomas County - KS Residents

PO103E - 2009  
Annual

### Discharges by Hospital, Age, and Major Service

Hospital	Total Discharges		Pediatric		Adult Medical/Surgical										Psychiatric		Obstetric		Newborn		Pct Surg
	Cases	Pct	Age 0 - 17		Age 18 - 44		Age 45 - 64		Age 65 - 74		Age 75 +		Cases	Pct	Cases	Pct	Cases	Pct			
Citizens Medical Cntr-Colby KS	605	51.5	38	6.3	58	9.6	96	15.9	69	11.4	206	34.0	5	0.8	70	11.6	63	10.4	6.0		
Hays Medical Center - KS	215	18.3	6	2.8	23	10.7	38	17.7	33	15.3	34	15.8	0		42	19.5	39	18.1	44.7		
Presbytrn/St Luke MC-Denver CO	67	5.7	2	3.0	5	7.5	29	43.3	16	23.9	10	14.9	0		3	4.5	2	3.0	74.6		
Logan County Hosp-Oakley KS	66	5.6	1	1.5	8	12.1	22	33.3	13	19.7	20	30.3	1	1.5	1	1.5	0				
St Catherine Hsp-Garden Cty KS	25	2.1	0		0		3	12.0	4	16.0	2	8.0	14	56.0	1	4.0	1	4.0	24.0		
Wesley Medical Cntr-Wichita KS	23	2.0	0		6	26.1	5	21.7	2	8.7	2	8.7	0		4	17.4	4	17.4	39.1		
Via Christi Rgnl MC-Wichita KS	18	1.5	0		3	16.7	8	44.4	2	11.1	4	22.2	1	5.6	0		0		66.7		
St Joseph Hospital-Denver CO	11	0.9	0		0		3	27.3	5	45.5	3	27.3	0		0		0		45.5		
Swedish Med Cntr-Englewood CO	11	0.9	2	18.2	5	45.5	1	9.1	1	9.1	2	18.2	0		0		0		54.5		
Salina Regional Hlth Center-KS	10	0.9	0		0		3	30.0	2	20.0	2	20.0	3	30.0	0		0		20.0		
Salina Surgical Hospital - KS	10	0.9	0		1	10.0	5	50.0	1	10.0	3	30.0	0		0		0		100.0		
Goodland Regional Med Cntr-KS	9	0.8	0		0		0		0		3	33.3	0		3	33.3	3	33.3	22.2		
* KS Residents/NE Hospitals	9	0.8	1	11.1	3	33.3	1	11.1	0		0		2	22.2	1	11.1	1	11.1	22.2		
Rawlins Cty Hlth Ctr-Atwood KS	8	0.7	0		0		2	25.0	2	25.0	2	25.0	0		1	12.5	1	12.5			
Univ of Kansas Hospital-KC KS	8	0.7	1	12.5	0		4	50.0	1	12.5	2	25.0	0		0		0		75.0		
* KS Residents/MN Hospitals	7	0.6	0		0		7	100.0	0		0		0		0		0		28.6		
Sheridan Cnty H Cmplx-Hoxie KS	7	0.6	0		1	14.3	0		0		6	85.7	0		0		0				
Children's Mercy Hosp-KC MO	6	0.5	6	100.0	0		0		0		0		0		0		0		50.0		
Childrens Hosp Assoc-Denver CO	6	0.5	5	83.3	1	16.7	0		0		0		0		0		0		16.7		
University Hospital-Denver CO	6	0.5	0		1	16.7	4	66.7	0		1	16.7	0		0		0		50.0		
Penrose St Fran HS-CO Sprgs CO	5	0.4	0		1	20.0	0		2	40.0	0		2	40.0	0		0		20.0		
* KS Residents/CO Hospitals	5	0.4	0		1	20.0	0		3	60.0	0		1	20.0	0		0		40.0		
Scott Cnty Hosp-Scott City KS	5	0.4	0		1	20.0	0		0		2	40.0	0		1	20.0	1	20.0	20.0		
Other Hospitals	32	2.7	0		7	21.9	7	21.9	2	6.3	7	21.9	4	12.5	2	6.3	3	9.4	46.9		
Total	1,174	100.0	62	5.3	125	10.6	238	20.3	158	13.5	311	26.5	33	2.8	129	11.0	118	10.1	23.0		



## Thomas County - KS Residents

PO103E - 2010  
Annual

### Discharges by Hospital, Age, and Major Service

Hospital	Total Discharges		Pediatric		Age 18 - 44		Age 45 - 64		Age 65 - 74		Age 75 +		Psychiatric		Obstetric		Newborn		Pct Surg
	Cases	Pct	Cases	Pct	Cases	Pct	Cases	Pct	Cases	Pct	Cases	Pct	Cases	Pct	Cases	Pct	Cases	Pct	
Citizens Medical Cntr-Colby KS	419	42.3	19	4.5	25	6.0	59	14.1	42	10.0	145	34.6	6	1.4	64	15.3	59	14.1	7.6
Hays Medical Center - KS	212	21.4	8	3.8	17	8.0	40	18.9	24	11.3	46	21.7	1	0.5	38	17.9	38	17.9	45.8
Logan County Hosp-Oakley KS	87	8.8	2	2.3	8	9.2	16	18.4	22	25.3	38	43.7	1	1.1	0		0		
Presbytrn/St Luke MC-Denver CO	67	6.8	2	3.0	5	7.5	31	46.3	14	20.9	12	17.9	0		2	3.0	1	1.5	68.7
Wesley Medical Cntr-Wichita KS	23	2.3	3	13.0	0		6	26.1	2	8.7	5	21.7	0		4	17.4	3	13.0	43.5
St Catherine Hsp-Garden Cty KS	17	1.7	0		3	17.6	5	29.4	0		0		9	52.9	0		0		35.3
Via Christi Rgnl MC-Wichita KS	16	1.6	1	6.3	3	18.8	4	25.0	3	18.8	4	25.0	1	6.3	0		0		50.0
St Joseph Hospital-Denver CO	13	1.3	0		1	7.7	3	23.1	4	30.8	5	38.5	0		0		0		46.2
Swedish Med Cntr-Englewood CO	10	1.0	2	20.0	3	30.0	2	20.0	1	10.0	2	20.0	0		0		0		60.0
Salina Regional Hlth Center-KS	9	0.9	1	11.1	1	11.1	2	22.2	3	33.3	0		2	22.2	0		0		22.2
Children's Mercy Hosp-KC MO	7	0.7	7	100.0	0		0		0		0		0		0		0		42.9
Goodland Regional Med Cntr-KS	7	0.7	0		1	14.3	0		0		4	57.1	0		1	14.3	1	14.3	14.3
Gove County Med Ctr-Quinter KS	7	0.7	0		0		0		1	14.3	0		0		0		6	85.7	
Univ of Kansas Hospital-KC KS	7	0.7	0		0		1	14.3	6	85.7	0		0		0		0		57.1
Penrose St Fran HS-CO Sprgs CO	6	0.6	0		1	16.7	0		2	33.3	1	16.7	2	33.3	0		0		16.7
Cheyenne Cty Hsp-St Francis KS	6	0.6	1	16.7	0		0		0		0		0		2	33.3	3	50.0	16.7
Childrens Hosp Assoc-Denver CO	6	0.6	5	83.3	1	16.7	0		0		0		0		0		0		
* KS Residents/NE Hospitals	5	0.5	0		3	60.0	0		1	20.0	0		1	20.0	0		0		20.0
Rawlins Cty Hlth Ctr-Atwood KS	5	0.5	0		1	20.0	4	80.0	0		0		0		0		0		
Salina Surgical Hospital - KS	5	0.5	0		0		3	60.0	1	20.0	1	20.0	0		0		0		100.0
University Hospital-Denver CO	5	0.5	0		0		4	80.0	0		1	20.0	0		0		0		60.0
Other Hospitals	51	5.2	0		6	11.8	14	27.5	7	13.7	13	25.5	4	7.8	4	7.8	3	5.9	39.2
Total	990	100.0	51	5.2	79	8.0	194	19.6	133	13.4	277	28.0	27	2.7	115	11.6	114	11.5	25.5



## Citizens Medical Center - Colby, KS

PO202E-2010  
Annual

### Market Penetration by Major Service, Age, and Patient ZIP Code of Residence

ZIP	City	Total Discharges		Pediatric		Age 18 - 44		Age 45 - 64		Age 65 - 74		Age 75 +		Psychiatric		Obstetric		Newborn		Surg
		Cases	Pct	Cases	Pct	Cases	Pct	Cases	Pct	Cases	Pct	Cases	Pct	Cases	Pct	Cases	Pct	Cases	Pct	
67701	Colby, KS	813	43.3	39	33.3	65	32.3	160	31.9	111	33.3	234	55.6	24	20.8	92	54.3	88	51.1	13.1
67735	Goodland, KS	759	5.1	38	5.3	59	3.4	146	1.4	143	6.3	232	0.9	12	0.0	68	16.2	61	18.0	3.6
67748	Oakley, KS	405	9.4	18	5.6	24	12.5	82	3.7	68	0.0	153	3.9	9	11.1	22	54.5	29	41.4	10.3
67753	Rexford, KS	74	44.6	5	60.0	7	14.3	15	20.0	11	18.2	14	35.7	2	50.0	10	90.0	10	90.0	16.7
67730	Atwood, KS	339	9.1	13	15.4	28	3.6	78	2.6	65	0.0	111	5.4	2	0.0	21	47.6	21	47.6	11.0
67732	Brewster, KS	64	37.5	4	25.0	5	60.0	8	25.0	7	42.9	20	35.0	0	0.0	9	44.4	11	36.4	12.5
67740	Hoxie, KS	302	6.0	16	0.0	24	0.0	48	4.2	30	0.0	145	2.8	4	0.0	14	42.9	21	28.6	9.9
67749	Oberlin, KS	510	1.8	10	0.0	30	0.0	93	0.0	82	0.0	254	0.0	7	0.0	18	27.8	16	25.0	2.9
67756	Saint Francis, KS	343	2.6	11	0.0	33	0.0	56	3.6	62	1.6	145	1.4	2	0.0	19	10.5	15	13.3	3.7
67757	Selden, KS	57	14.0	1	0.0	11	0.0	11	0.0	8	0.0	17	17.6	1	100.0	4	50.0	4	50.0	9.5
67747	Monument, KS	22	31.8	3	0.0	0	0.0	1	0.0	1	0.0	11	45.5	2	0.0	2	50.0	2	50.0	0.0
67731	Bird City, KS	116	5.2	5	20.0	12	8.3	18	0.0	7	0.0	59	0.0	3	0.0	6	33.3	6	33.3	3.3
67743	Levant, KS	20	30.0	1	100.0	0	0.0	5	60.0	1	0.0	6	33.3	1	0.0	3	0.0	3	0.0	0.0
67764	Winona, KS	33	18.2	4	0.0	3	0.0	7	28.6	3	0.0	9	0.0	1	0.0	3	66.7	3	66.7	15.4



# Citizens Medical Center - Colby, KS

OP TOT223E - 2010  
Annual  
Hospital - 171362

## Total Outpatient Visits and Market Share by Revenue Category and Patient County Code

Revenue Category	Total	20193		20109		20153		20181		20179		20063		20039		All Other
	Visits	Visits	%	Visits	%	Visits	%	Visits	%	Visits	%	Visits	%	Visits	%	Visits
1 Emergency Dept (45x)	2,197	1,561	86.7	101	11.2	47	8.1	73	15.7	59	10.7	23	9.4	23	2.8	310
2 Surgery (36x, 49x)	419	163	30.7	26	9.8	65	29.4	32	6.3	46	18.3	6	2.5	10	5.6	71
3 Observation (762)	169	112	65.5	13	14.6	4	4.4	5	1.5	4	4.0	1	3.0	2	0.6	28
11 Radiology-Diag (32x ex 322&323)	2,864	1,777	82.7	255	19.8	158	15.5	131	4.9	132	13.6	60	6.7	37	5.3	314
14 Nuclear Medicine (34x)	210	89	53.0	36	35.6	13	22.8	16	13.5	11	12.0	13	10.5	2	2.2	30
15 CT Scan (35x)	755	488	78.5	54	15.8	36	13.1	28	5.2	34	11.4	11	4.5	12	3.2	92
16 Mammography (401, 403)	704	455	78.3	81	22.0	39	15.7	31	5.5	55	21.4	10	2.9	9	3.2	24
17 Ultrasound (402)	669	399	74.4	68	26.3	52	27.8	48	7.7	23	10.8	10	3.3	15	6.8	54
19 Magnetic Resonance Tech (61x)	408	226	83.7	58	33.1	31	18.5	19	6.5	26	17.2	8	4.7	5	4.3	35
21 Chemotherapy (33x excl. 333)	310	244	94.2	10	50.0	12	37.5	8	4.0	9	30.0					27
23 Pulmonary Function (46x)	146	77	63.1	7	6.7	15	45.5	16	3.1	4	16.0	1	2.6	5	15.2	21
25 Stress Test (482)	96	42	57.5	23	44.2	2	5.6	3	4.3	6	10.9	5	8.6	2	2.0	13
27 Electroencephalogram (74x)	35	12	85.7	3	30.0	7	100.0	6	75.0					2	50.0	5
33 Cardiac Rehab (943)	11	8	53.3							3	50.0					
35 Treatment Room (76x excl. 762)	2,043	1,211	85.3	188	28.9	167	14.8	137	11.9	104	10.1	48	5.8	23	2.1	165
36 Respiratory Services (41x)	170	115	95.0	6	37.5	5	29.4	11	57.9	5	38.5	1	3.9	4	5.9	23
37 EKG/ECG (73x)	696	452	76.6	46	12.3	30	7.1	34	5.1	30	7.3	10	3.2	10	2.3	84
38 Cardiology (48x excl. 481-483)	128	92	85.2	5	7.3	3	6.0	5	4.6	8	10.0	2	2.4	4	4.7	9
39 Sleep Lab (HCPC 95805-95811)	69	32	65.3	2	20.0	5	41.7	12	85.7	5	31.3	2	12.5	1	14.3	10
42 Physical Therapy (42x)	336	270	78.3	23	3.4	15	4.3	6	0.6	12	3.9	3	0.7	2	0.7	5
43 Occupational Therapy (43x)	114	22	57.9	46	48.4	1	25.0	20	10.4	2	9.5	10	12.5			13
44 Speech-Language Pathology (44x)	25	18	81.8	2	6.7					2	16.7	3	12.0			
Actual visits in report	9,962	6,175	79.7	872	17.0	615	15.2	546	6.8	476	12.3	187	4.8	139	3.5	952
Actual unclassified visits	11,985	8,056	88.3	884	19.0	703	17.5	571	4.7	506	13.1	188	3.8	208	5.7	869
Actual total visits	21,947	14,231	84.4	1,756	18.0	1,318	16.3	1,117	5.5	982	12.7	375	4.3	347	4.5	1,821
ED visits admitted; not included	231	170	76.2	12	12.4	6	15.8	5	4.3	6	17.7			3	7.9	29
20193 is Thomas, KS	20109 is Logan, KS					20153 is Rawlins, KS					20181 is Sherman, KS					
20179 is Sheridan, KS	20063 is Gove, KS					20039 is Decatur, KS					Other is All other counties					



---

## Town Hall Attendees Notes & Feedback

**[VVV Research & Development INC]**

# Thomas County KS Town Hall Roster N = 33

Date: 03.05.12		Community		
Last Name	First Name	Title	Organization	Address/City/ST/Zip
Herbel	Mary	Senior Case Manager	Area Agency on Aging	7 Cottonwood Drive, Colby, KS 67701
Duffey	Vickie	Director of Nursing	Citizens Medical Center	100 E. College Dr., Colby, KS 67701
Brown	Jeanene	Education Manager	CMCI	100 E. College Dr., Colby, KS 67701
Evans	Patsy	CFO	CMCI	100 E. College Dr., Colby, KS 67701
Kriegshauser	Kelly	Social Worker	CMCI	100 E. College Dr., Colby, KS 67701
McVay	Marie	HIM Manager	CMCI	100 E. College Dr., Colby, KS 67701
Seemann	Rosalie	Treasurer, Board of Trustees	CMCI	100 E. College Dr., Colby, KS 67701
Standage	Bob	Member, Board of Trustees	CMCI	100 E. College Dr., Colby, KS 67701
Trenkle	Kevan	CEO	CMCI	100 E. College Dr., Colby, KS 67701
Young	Gwen	Assistant to CEO	CMCI	100 E. College Dr., Colby, KS 67701
Vacik	Dr. Stephen	President	Colby Community College	1255 S. Range Ave., Colby, KS 67701
Friedlander	Sharon		Colby Free Press	155 W. 5th St., Colby, KS 67701
Skolout	Shirley	Director	Colby Housing Authority	600 S. Mission Ridge, Colby, KS 67701
Jones	Randy	Chief of Police	Colby Police Department	225 N. Court, Colby, KS 67701
Chain	Tom	Manager	Dillon's	1605 S. Range Ave., Colby, KS 67701
Schrack	Tina		Emergency Pregnancy Services	350 S. Range Ave., Ste. 3, Colby, KS 67701
Bear	Dr. Steven	Family Practitioner	Family Center for Health Care	310 E. College Dr., Colby, KS 67701
Niblock	Jenny	Nurse Practitioner	Family Center for Health Care	310 E. College Dr., Colby, KS 67701
Marquez	Mary	Case Manager	Farm Worker's Program	1700 F Ave., Dodge City, KS 67801
Goodheart	Velma	VP/Commercial Loan Office	Farmers & Merchants Bank	P.O.Box 797, Colby, KS 67701
Kuhlman	Sandy	Executive Director	Hospice Services	P.O. Box 116, Phillipsburg, KS 67661
Jones	Virgil		Lions Club/Genesis Board	1155 Wheatridge, Colby, KS 67701
Jamison	Joan	Director of Nursing	Prairie Senior Living Complex	1625 S. Franklin Ave., Colby, KS 67701
Draper	Sue	Treasurer	Salvation Army-Thomas County	148 S. Adams, Colby, KS 67701
Evans	Sue		Thomas County Coalition	460 N. Garfield, Colby, KS 67701
Olson	Melinda	Director	Thomas County Community Foundation	350 S. Range Ave., Ste. 8, Colby, KS 67701
Rocca	Christy	Director	Thomas County Economic Development	350 S. Range Ave., Ste. 12, Colby, KS 67701
McMahan	Susan	Director	Thomas County Emergency Management	350 S. Range Ave., Ste. 15, Colby, KS 67701
Hickert	Joe	Director	Thomas County EMS	1275 S. Franklin Ave., Colby, KS 67701
Gerstner	Diann	FACS Agent	Thomas County Extension Service	350 S. Range Ave., Ste. 16, Colby, KS 67701
Rothchild	Kasiah	Director	Thomas County Health Department	350 S. Range Ave., Ste. 2, Colby, KS 67701
Spencer	Jarrod	President	Thomas County Ministerial Alliance	510 E. 4th St., Colby, KS 67701
Harrison	Terrel	Superintendent	USD 315	600 W. Third, Colby, KS 67701

Thomas County Community Health Needs Assessment Meeting  
03.05.12  
n = 33

WHO is present?

Health Dept. = 1

Doctor = 1

Nurses = 4

Business owners = 1

City Officials = 1 (Chief of Police)

Religious leader = 1 (Church of Christ)

Superintendent from School District = 1

Color Card – Anything that will affect our health in Thomas/ Colby  
Including a score of the overall health of the community

5 – 2

4 – +

3 – ++

2 –

1 – 0

School Nurses: 1 (in our district)

School Districts: 3

Wellness Program: YES

Health Department is going for accreditation in the next few years

Doctor Inventory:

Dentists: 3 (not enough)

Optometrist: 3

Chiropractor: 7 +

Podiatrist: 2

Auditory: 2? Maybe

Urgent Care: 0

Home Care / Hospice - yes

WHAT is available in the community?

Fitness center = 3 (college, DT, City Rec)

Wellness center = 0

Tab 1

- Growth, Dairy industry and businesses have been expanding

Tab 3

- Poverty – lunch numbers are increasing

Tab 5

- Where are people going? Hays and Denver

Tab 6

- Food assistance, is growing, validated by community

- Public opinion of suicidal people (primarily at college)– it shows up in published data, but concern doesn't show up in the public opinion.
  - Feel like they get better care b/c its such a small community so it doesn't go unnoticed – they get really good care addressing the issues.
- People are using more assistance programs (statistically) but not showing up in the public concern.

\*\* Concern: there is discussion of a train being ran through town – blocking the flow of traffic and potentially creating accidents car v. train bc people wont be used to the trains.

#### STRENGTHS:

- Availability of healthcare
- Number of providers
- Low premi birth weight
- Breastfeeding rates
- Growing medical community
- Provide to surrounding communities – bringing in business from other counties
- Fitness opportunities
- Visiting doctors from Hays/ Denver
- Survey return rate – the number of people who are involved – and the partnerships established.
- Low unemployment
- EMS is improving
- Surgeons coming
- School lunch program

#### WEAKNESSES / to change or improve:

- Home Health access
- Mental Health – more providers / access to providers in community (go to ER currently) Transportation is an issue
- At least 2 private providers of mental health - NEED TO KNOW WHO THEY ARE
- Social services
- Dentists/ who take Medicaid
- Obesity
- Access to specialists (general surgery)
  - o Orthopedics, Dialysis, chemo, radiation
- Economic Development

Thomas County Community Health Needs Assessment Meeting  
03.05.12  
n = 33

TOPICS TO VOTE ON:

Specialty Services (chemo, radiation, dialysis, surgery): 16  
Substance Abuse: 2  
Obesity: 17  
Heart Disease: 3  
Chronic Disease: 6  
Nursing Home: 2  
Social Services: 6  
Mental Health (Awareness of providers / funding): 22  
Home Health: 13  
Uninsured: 16  
Dentists (take Medicaid): 14  
Teen Pregnancy: 9  
Transportation: 6

# CHNA Additional Thoughts 2012

## Introduction -Town Hall Feedback Survey

Several KS county Community Health Needs Assessment Town Hall meetings have been held recently by VVV Research & Development to collect public opinions regarding health care delivery. If you did not get a chance to attend your local county meeting or have further opinions to share, NOW is your opportunity to share online.

### 1. Your Kansas county of residence ?

- |                               |                                |                              |
|-------------------------------|--------------------------------|------------------------------|
| <input type="radio"/> Barton  | <input type="radio"/> Kiowa    | <input type="radio"/> Thomas |
| <input type="radio"/> Decatur | <input type="radio"/> Norton   | <input type="radio"/> Trego  |
| <input type="radio"/> Ellis   | <input type="radio"/> Pawnee   |                              |
| <input type="radio"/> Gove    | <input type="radio"/> Phillips |                              |

### 2. Are there any county / community area healthcare services that you feel are being offered / delivered currently in a "High Quality" manner (a county strength) ? (Be specific)

### 3. Are there any healthcare services in your county / community that you feel need to be improved and/or changed? (Be specific)

### 4. Finally, how would you rate the "overall health" of your county? (Note: if you have already answered this question please skip)

	5 - Very Good	4 - Good	3 - Fair	2 - Poor	1 - Very Poor
County Health Rating	<input type="radio"/>	<input type="radio"/>	<input type="radio"/>	<input type="radio"/>	<input type="radio"/>

CHNA Additional TownHall Feedback - Thomas County KS			
Code	Code 2	Code 3	Are there any county / community area healthcare services that you feel are being offered / delivered currently in a "High Quality" manner (a county strength) ? (Be specific)
ACC			Access to local Drs is quite good.
ACC			Access to local providers; diagnostic capabilities at local hospital.
ACC			Citizens Medical Center's diagnostics and physician availability
ACC			We have several providers available in our community. Patients can pick which provider they want to see, we have choices.
CHIR	EYE		Chiropractors, Eye Doctors
COMM			I feel that CMCI offers many services besides just inpatient treatment. I do think that some of the classes need to be advertised more so that more of the community is aware of what is offered.
DOCS			available doctors, PAs, and other healthcare professionals.
DOCS	OBG		MORE PHYSICIANS THAN OTHER AREA COUNTIES. BETTER OBSTETICAL CARE THAN OTHER AREA COUNTIES.
FAC			Citizens Medical Center and Family Center for Health
FAC	STFF		Citizens Medical Center provides healthcare services in a high quality manner
MAMO	DIAB	SUR	diagnostic services, ie. DEXA, mammography, sonography, MRI, and diabetes education, surgical services
MAMO	FP		Digital Mammography, CT Scans, MRI and Family Practitioners at FCHC
PRIM	SPEC		Doctors, nurses, nurse practioners, physicians assistants all do their job in a professional manner.
PRIM			Family Center for Health Care provides high quality primary care with a lot of choices.
RAD			Our hospital stays current on Radiology equipment.
SPEC	SURG	OBG	Yes, we have lots of options w/the Specialty Drs that come to Colby & we are continually getting more & more family providers w/extra specialties such as general surgery, Obstetrics, etc.
			A Good hospital and County Health Dept, additional GPs entering service.
			CITIZENS MEDICAL CENTER, THOMAS COUNTY HEALTH DEPT.
			I think Thomas County does a very good job offering healthcare
			Overall good primary care. Good community interaction to provide wellness opportunities for the community.
			PRENATAL CARE.
			quality family practice care, OB care

## CHNA Additional TownHall Feedback - Thomas County KS

Code Code 2 Code 3			Are there any healthcare services in your county / community that you feel need to be improved and/or changed? (Be specific)
BH	DENT	WELL	As we sited at the meeting: more access to quality mental health care; more access for low-income to dental care and increased participation by high-risk population to wellness/ prevention oriented programs.
BH			Mental Health care services are lacking greatly.
BH			mental health care.
BH	WELL		MENTAL HEALTH, PREVENTATIVE/WELLNESS EDUCATION (TEEN PREGNANCY, CHRONIC DISEASE)
BH	INSU		Our community struggles with Mental health services with a sliding fee scale (services that the uninsured can afford).
BH			the mental health care workers who are affordable are very overworked
BH	INSU		There is a need for better mental health services for those on low income
DENT	BH	INSU	Better access to dental care, mental health services. Uninsured/underinsured population will only get worse, I'm afraid (unfortunately, don't know of a solution for that).
DENT	EYE		Dentist and Optometrist
DENT			Dentists, not enough providers.
DENT			Diagnostic Services and Dentistry/Dental Health Services
DENT	BH		Need more Dental and Mental Health
EMS			EMS
EMS			EMS services
HH			More home health care available.
HH			Probably need more home health.
PEDS	NEU	DERM	We could always use a few more specialty dr's of different specialties, such as pediatric neurologist, dermatolgist (non-restrictive), endocrinologist, just to name a few.
PREV	WELL		Preventative Healthcare and Lifestyles advocacy
PUL	BH		PULMONARY SERVICES FOR CHRONIC LUNG CONDITIONS MORE MENTAL HEALTH OPTIONS
SURG			Colby Surgical Center
TPRG	PNEO		EDUCATION FOR TEEN PREGNANCY PREVENTION. PRENATAL EDUCATION FOR YOUNG MOTHERS(14 - 24)
TPRG	DRUG		teen pregnancy is too high, fair amount of drug abuse
TRAN			Transportation to health care visits could be improved
			NO



---

## Public Notice & Invitation

**[VVV Research & Development INC]**



## **NEWS**

**Date: January 20, 2012**

**For Immediate Release**

**Media Contact: Kevan Trenkle**

In order to gauge the overall health needs of Thomas County residents, Citizens Medical Center is working together with the Thomas County Health Department to conduct a community-wide health needs assessment. Results of the survey will provide guidance to address health care needs and fulfill both federal and state mandates.

To gather the necessary information for this assessment, a comprehensive paper / online survey has been created to measure Thomas County resident's views regarding health care perceptions of delivery, access, and health practices. Starting the week of January 23<sup>rd</sup>, surveys will be mailed to 800 randomly selected Thomas County residents. (Note: If you would like to participate and do not receive a paper survey, please log into <https://www.surveymonkey.com/s/BXV7CDC> to take the survey online. Additionally, there will be a limited supply of paper surveys that can be obtained at Citizens Medical Center.) VVV Research & Development, Inc., an independent research firm from Olathe, Kansas, has been retained to conduct this county-wide research.

**It is important that these surveys be completed and returned by Friday February 10<sup>th</sup>, 2012.** Participants who choose to take the survey will answer questions dealing with health-related topics such as diet/nutrition, exercise, health concerns, and access to care, etc. All survey responses are anonymous and completing the survey takes less than 10 minutes.

**In addition, residents interested in discussing and prioritize Thomas County future health initiatives will have their chance on Monday, March 5<sup>th</sup>, 2012.** Currently, a Town Hall luncheon meeting is being organized on this date at the City Limits Convention Center from 11:30 am – 1 pm. More information on how to participate will be released in a few weeks.

# **CITIZENS MEDICAL CENTER, INC.**

---



## **CMC**

### **Citizens Medical Center**

100 E. College Drive  
Colby, KS 67701-3799  
(785) 462-7511  
(785) 460-4870 Fax



## **PSLC**

### **Prairie Senior Living Complex**

1625 S. Franklin Avenue  
Colby, KS 67701-3722  
(785) 462-8295  
(785) 462-7130 Fax

## **NEWS**

**Date: January 20, 2012**

**For Immediate Release**

**Media Contact: Kevan Trenkle, CEO**

In order to gauge the overall health needs of Thomas County residents, Citizens Medical Center is working together with the Thomas County Health Department to conduct a community-wide health needs assessment. Results of the survey will provide guidance to address healthcare needs and fulfill both federal and state mandates.

To gather the necessary information for this assessment, a comprehensive paper / online survey has been created to measure Thomas County residents' views regarding health care perceptions of delivery, access, and health practices. Starting the week of January 23<sup>rd</sup>, surveys will be mailed to 800 randomly selected Thomas County residents. (Note: If you would like to participate and do not receive a paper survey, please log into <https://www.surveymonkey.com/s/BXV7CDC> to take the survey online. Additionally, there will be a limited supply of paper surveys that can be obtained at Citizens Medical Center.) VVV Research & Development, Inc., an independent research firm from Olathe Kansas, has been retained to conduct this county-wide research.

**It is important that these surveys be completed and returned by Friday February 10<sup>th</sup>, 2012.** Participants who choose to take the survey will answer questions dealing with health-related topics such as diet/nutrition, exercise, health concerns, and access to care, etc. All survey responses are anonymous and completing the survey takes less than 10 minutes.

**In addition, residents interested in discussing and prioritizing Thomas County future health initiatives will have their chance on Monday, March 5<sup>th</sup>, 2012.** Currently, a Town Hall luncheon meeting is being organized on this date at City Limits Convention Center from 11:30 am – 1 pm. More information on how to participate will be released in a few weeks.

Colby Free Press, 1/25/12

# Hospital sends survey to town

By Christina Berlinger

Colby Free Press  
colby.society@nwkanas.com

Colby's hospital and the county health department hope to gauge the overall quality of health care being delivered here with a survey to be mailed to 800 randomly selected residents in Thomas County.

Kevan Trenkle, chief executive officer at Citizens Medical Center, said the purpose is two-fold.

"A new state mandate was passed," he said, "and so every three years we are required by law to take assessment of the health care in the county, since we are a nonprofit hospital. Secondly, we

need to set a basis for comparison so we can determine any issues that need to be improved upon."

Trenkle said that the survey will be mailed starting this week and needs to be returned by Friday, Feb. 10. Anyone who doesn't receive a paper copy and would like to participate can get one from the hospital administration office or online at [www.surveymonkey.com/s/BXV7CDC](http://www.surveymonkey.com/s/BXV7CDC).

"The comprehensive survey will measure Thomas County residents' views regarding health care perceptions of delivery, access and health practices," Trenkle said. "Participants who choose to

## Hospital asks for responses

From "HOSPITAL," Page 1

take the survey will answer questions dealing with health-related topics such as diet and nutrition, exercise, health concerns and access to care."

He said all responses are anonymous. The results will be presented at a community forum at 11:30 a.m. Monday, March 5, at the City Limits Convention Center.

"I encourage anyone who is interested in discussing and prioritizing Thomas County future health initiatives to attend the meeting in March," Trenkle said.

Trenkle asks that anyone planning to attend should contact his secretary, Gwen Young, at (785) 460-4800, to reserve a seat at least two weeks in advance, by Monday, Feb. 20.



# ***CITIZENS MEDICAL CENTER, INC.***

---



## **CMC**

### **Citizens Medical Center**

100 E. College Drive  
Colby, KS 67701-3799  
(785) 462-7511  
(785) 460-4870 Fax



## **PSLC**

### **Prairie Senior Living Complex**

1625 S. Franklin Avenue  
Colby, KS 67701-3722  
(785) 462-8295  
(785) 462-7130 Fax

Date: February 7, 2012  
For Immediate Release  
Media Contact: Kevan Trenkle, CEO

## **Have you taken the Thomas County Community Health Needs Assessment survey?**

Take the survey: <https://www.surveymonkey.com/s/BXV7CDC>

Citizens Medical Center invites Thomas County residents to share their health views and concerns in an online Community Health Needs Assessment.

A survey is available at Citizens Medical Center until February 15, 2012. Confidential responses will help both Citizens Medical Center and the Thomas County Health Department to:

- Determine health-related trends and issues of the community.
- Assess programs in place to meet those needs.
- Develop strategies to address unmet health needs through community services.

“We depend on the valuable feedback we receive from our community to help us make health delivery decisions,” said Kevan Trenkle, Citizens Medical Center, Inc.’s Chief Executive Officer. For more information or to arrange for a paper survey, please phone 785-462-7511.

---

## Primary Research Detail

**[VVV Research & Development INC]**

## 2012 Community Health Needs Assessment: Thomas County, KS

We need your input. Citizens Medical Center and Thomas County Health Department are working together to conduct a community health needs assessment survey.

With U.S. Health Reform, comes legislation to collect public opinion regarding community health care needs & preferences. In order to gather this information, a confidential survey has been developed (for research purposes only). If you prefer, you can complete this same survey online by copying the following link into your browser: <https://www.surveymonkey.com/s/BXV7CDC>

**The survey needs to be completed & returned by Friday, Feb 10th, 2012.**

### **Part I: HEALTHCARE PERCEPTIONS & SATISFACTION**

#### **1. In general, how would you rate the overall quality of the healthcare delivered to your community?**

	Very Good	Good	Fair	Poor	Very Poor
OVERALL Quality of Care	<input type="radio"/>	<input type="radio"/>	<input type="radio"/>	<input type="radio"/>	<input type="radio"/>

#### **2. How satisfied are you with each of the following . . .? (Check one box per row)**

	Very Good	Good	Fair	Poor	Very Poor	N/A
a) Ambulance Service	<input type="radio"/>	<input type="radio"/>	<input type="radio"/>	<input type="radio"/>	<input type="radio"/>	<input type="radio"/>
b) Child Care	<input type="radio"/>	<input type="radio"/>	<input type="radio"/>	<input type="radio"/>	<input type="radio"/>	<input type="radio"/>
c) Chiropractor	<input type="radio"/>	<input type="radio"/>	<input type="radio"/>	<input type="radio"/>	<input type="radio"/>	<input type="radio"/>
d) Dentists	<input type="radio"/>	<input type="radio"/>	<input type="radio"/>	<input type="radio"/>	<input type="radio"/>	<input type="radio"/>
e) Emergency Room	<input type="radio"/>	<input type="radio"/>	<input type="radio"/>	<input type="radio"/>	<input type="radio"/>	<input type="radio"/>
f) Eye Doctor / Optometrist	<input type="radio"/>	<input type="radio"/>	<input type="radio"/>	<input type="radio"/>	<input type="radio"/>	<input type="radio"/>
g) Family Planning Services	<input type="radio"/>	<input type="radio"/>	<input type="radio"/>	<input type="radio"/>	<input type="radio"/>	<input type="radio"/>
h) Home Health	<input type="radio"/>	<input type="radio"/>	<input type="radio"/>	<input type="radio"/>	<input type="radio"/>	<input type="radio"/>
i) Hospice	<input type="radio"/>	<input type="radio"/>	<input type="radio"/>	<input type="radio"/>	<input type="radio"/>	<input type="radio"/>
j) Inpatient Services	<input type="radio"/>	<input type="radio"/>	<input type="radio"/>	<input type="radio"/>	<input type="radio"/>	<input type="radio"/>
k) Mental Health Services	<input type="radio"/>	<input type="radio"/>	<input type="radio"/>	<input type="radio"/>	<input type="radio"/>	<input type="radio"/>
l) Nursing Home	<input type="radio"/>	<input type="radio"/>	<input type="radio"/>	<input type="radio"/>	<input type="radio"/>	<input type="radio"/>
m) Outpatient Services	<input type="radio"/>	<input type="radio"/>	<input type="radio"/>	<input type="radio"/>	<input type="radio"/>	<input type="radio"/>
n) Pharmacy	<input type="radio"/>	<input type="radio"/>	<input type="radio"/>	<input type="radio"/>	<input type="radio"/>	<input type="radio"/>
o) Primary Care	<input type="radio"/>	<input type="radio"/>	<input type="radio"/>	<input type="radio"/>	<input type="radio"/>	<input type="radio"/>
p) Public Health Department	<input type="radio"/>	<input type="radio"/>	<input type="radio"/>	<input type="radio"/>	<input type="radio"/>	<input type="radio"/>
q) School Nurse	<input type="radio"/>	<input type="radio"/>	<input type="radio"/>	<input type="radio"/>	<input type="radio"/>	<input type="radio"/>
r) Specialist Physician Care	<input type="radio"/>	<input type="radio"/>	<input type="radio"/>	<input type="radio"/>	<input type="radio"/>	<input type="radio"/>

Other (please specify)

#### **3. Over the past 2 years, did you or your household receive health care services outside of your county?**

☐ Yes

☐ No

If yes, please specify the healthcare services you received

**4. Are there healthcare services in your community / neighborhood that you feel need to be improved and / or changed? (Please be specific)**

**5. In your opinion, how much of a problem are the following causes of diseases or disability in your community? (Check one box per row)**

	Not a Problem	Somewhat of a Problem	Major Problem	Don't Know
a) Cancer	<input type="radio"/>	<input type="radio"/>	<input type="radio"/>	<input type="radio"/>
b) Diabetes	<input type="radio"/>	<input type="radio"/>	<input type="radio"/>	<input type="radio"/>
c) Drugs / Alcohol	<input type="radio"/>	<input type="radio"/>	<input type="radio"/>	<input type="radio"/>
d) Heart Disease	<input type="radio"/>	<input type="radio"/>	<input type="radio"/>	<input type="radio"/>
e) HIV / AIDS	<input type="radio"/>	<input type="radio"/>	<input type="radio"/>	<input type="radio"/>
f) Mental Disorders	<input type="radio"/>	<input type="radio"/>	<input type="radio"/>	<input type="radio"/>
g) Obesity	<input type="radio"/>	<input type="radio"/>	<input type="radio"/>	<input type="radio"/>
h) Pneumonia / Flu	<input type="radio"/>	<input type="radio"/>	<input type="radio"/>	<input type="radio"/>
i) Respiratory Disease	<input type="radio"/>	<input type="radio"/>	<input type="radio"/>	<input type="radio"/>
j) Sexually Transmitted Diseases	<input type="radio"/>	<input type="radio"/>	<input type="radio"/>	<input type="radio"/>
k) Stroke	<input type="radio"/>	<input type="radio"/>	<input type="radio"/>	<input type="radio"/>
l) Suicide	<input type="radio"/>	<input type="radio"/>	<input type="radio"/>	<input type="radio"/>
m) Trauma	<input type="radio"/>	<input type="radio"/>	<input type="radio"/>	<input type="radio"/>
Other (please specify)				

**6. How well do you feel our local health care providers are doing in addressing the health needs of the following age groups? (Check one box per row)**

	Very Good	Good	Fair	Poor	Very Poor	N/A
Infants'	<input type="radio"/>	<input type="radio"/>	<input type="radio"/>	<input type="radio"/>	<input type="radio"/>	<input type="radio"/>
Age 1- 12	<input type="radio"/>	<input type="radio"/>	<input type="radio"/>	<input type="radio"/>	<input type="radio"/>	<input type="radio"/>
Age 13 - 17	<input type="radio"/>	<input type="radio"/>	<input type="radio"/>	<input type="radio"/>	<input type="radio"/>	<input type="radio"/>
Age 18 - 44	<input type="radio"/>	<input type="radio"/>	<input type="radio"/>	<input type="radio"/>	<input type="radio"/>	<input type="radio"/>
Age 45 - 64	<input type="radio"/>	<input type="radio"/>	<input type="radio"/>	<input type="radio"/>	<input type="radio"/>	<input type="radio"/>
Age 65 - 84	<input type="radio"/>	<input type="radio"/>	<input type="radio"/>	<input type="radio"/>	<input type="radio"/>	<input type="radio"/>
Over 85	<input type="radio"/>	<input type="radio"/>	<input type="radio"/>	<input type="radio"/>	<input type="radio"/>	<input type="radio"/>

**7. Does our community need any additional healthcare providers?**

☐ Yes ☐ No

If yes, please specify what is needed:



**8. In your opinion, what areas need additional education or attention in our community? (Check all that apply)**

- |   |   |   |
|---|---|---|
| <input type="checkbox"/> a) Abuse / Violence                | <input type="checkbox"/> i) Mental Illness          | <input type="checkbox"/> q) Sexually Transmitted Diseases |
| <input type="checkbox"/> b) Aging (Dementia)                | <input type="checkbox"/> j) Neglect                 | <input type="checkbox"/> r) Suicide                       |
| <input type="checkbox"/> c) Alcohol                         | <input type="checkbox"/> k) Nutrition               | <input type="checkbox"/> s) Teen Pregnancy                |
| <input type="checkbox"/> d) Alternative Medicine            | <input type="checkbox"/> l) Obesity                 | <input type="checkbox"/> t) Tobacco Use                   |
| <input type="checkbox"/> e) Child Care                      | <input type="checkbox"/> m) Ozone                   | <input type="checkbox"/> u) Uninsured                     |
| <input type="checkbox"/> f) Chronic Diseases                | <input type="checkbox"/> n) Pain Management         | <input type="checkbox"/> v) Vaccinations                  |
| <input type="checkbox"/> g) Family Planning / Birth Control | <input type="checkbox"/> o) Poverty                 | <input type="checkbox"/> w) Water Quality                 |
| <input type="checkbox"/> h) Lead Exposure                   | <input type="checkbox"/> p) Preventative Healthcare | <input type="checkbox"/> x) Wellness Education            |

Other (please specify)

## **PART II: YOUR HEALTH PRACTICES**

**9. In general, how would you best describe your health? (Choose one)**

- ☐ Very Good
 ☐ Good
 ☐ Fair
 ☐ Poor
 ☐ Very Poor

**10. Compared to a year ago, how would you rate your overall health in general now?**

- ☐ Much better than a year ago
 ☐ About the same
 ☐ Much Worse than a year ago

**11. Does your household have a provider you use for primary care?**

- ☐ Yes
 ☐ No

If Yes, Please give Physician's name / Specialty / City

**12. Have you had a physical in the past 12 months?**

- ☐ Yes
 ☐ No

If no, why not? (Be specific)

**13. Do you follow these health practices . . . ? (Check one box per row)**

	Yes	No	N/A
If over 50, have you had a colonoscopy?	<input type="radio"/>	<input type="radio"/>	<input type="radio"/>
If male over 50, do you have annual prostate exams?	<input type="radio"/>	<input type="radio"/>	<input type="radio"/>
If female over 40, do you have annual mammograms?	<input type="radio"/>	<input type="radio"/>	<input type="radio"/>
If female, do you have a pap smear every other year?	<input type="radio"/>	<input type="radio"/>	<input type="radio"/>
Do you get 2.5 hours a week of Moderately intense physical activity?	<input type="radio"/>	<input type="radio"/>	<input type="radio"/>

**14. Please complete sentence below. Are you ..... ?**

	Yes	No	N/A
a) Eating right	<input type="radio"/>	<input type="radio"/>	<input type="radio"/>
b) Using tobacco products	<input type="radio"/>	<input type="radio"/>	<input type="radio"/>
c) Exercising	<input type="radio"/>	<input type="radio"/>	<input type="radio"/>
d) Excessively Consuming Alcohol	<input type="radio"/>	<input type="radio"/>	<input type="radio"/>

**Part III: A LITTLE MORE ABOUT YOU**

**15. What is your age?**

- ☐ Under 18      ☐ 18 - 44      ☐ 45 - 64      ☐ 65 - 74      ☐ Over 75

**16. Your gender?**

- ☐ Male      ☐ Female

**17. How would you identify yourself?**

- ☐ a) Caucasian / White American      ☐ d) American Indian / Native Alaskan  
☐ b) African American / Black American      ☐ e) Asian American / Pacific Islander  
☐ c) Latino / Hispanic American      ☐ f) Multicultural / Multiracial

Other (please specify)

**18. How would you describe your household?**

- ☐ Single      ☐ Married with children no longer at home  
☐ Married      ☐ Divorced  
☐ Married with children at home      ☐ Other \_\_\_\_\_

**19. Regarding your health insurance coverage... What type of health coverage is your primary plan? (Choose one)**

- ☐ Private Insurance you purchased      ☐ Covered by Employer (employer pays total cost)  
☐ Medicare      ☐ Covered by Employer (you & employer share cost)  
☐ Medicaid      ☐ No Coverage (Uninsured)

Other (please specify)

**20. What is your home 5 digit zip code?**

**Thank you. Please return completed survey with enclosed business reply envelope.**

## Community Healthcare Needs Assessment 2012

Sample Size / Confidence Level: With the completion of 230 area households, the standard error range for this response was +/- 5% at the 95% confidence interval. (Sudman Applied Sampling 1976 - regional subgroups)

CHNA Survey (Reply / # Households surveyed) = Response Rate	NW KS 1469/5506	26.7%	Thomas CO 230/776	29.6%
What is your age?	NW KS N=1469	%	Thomas CO N=230	%
Under 18 (omit)	0	0.0%	0	0.0%
18 - 44	384	28.5%	65	30.2%
45 - 64	609	45.1%	98	45.6%
65 - 74	169	12.5%	29	13.5%
Over 75	187	13.9%	23	10.7%
Totals	1349	100.0%	215	100.0%

### Community Healthcare Needs Assessment 2012

Your gender?	NW KS N=1469	%	Thomas CO N=230	%
Male	338	25.5%	54	25.4%
Female	987	74.5%	159	74.6%
Totals	1325	100.0%	213	100.0%

### Community Healthcare Needs Assessment 2012

How would you identify yourself?	NW KS N=1469	%	Thomas CO N=230	%
a) Caucasian / White American	1308	96.9%	206	95.8%
b) African American / Black American	6	0.4%	0	0.0%
c) Latino / Hispanic American	13	1.0%	4	1.9%
d) American Indian / Native Alaskan	3	0.2%	1	0.5%
e) Asian American / Pacific Islander	3	0.2%	0	0.0%
f) Multicultural / Multiracial	4	0.3%	1	0.5%
Other (please specify)	13	1.0%	3	1.4%
Totals	1350	100.0%	215	100.0%

### Community Healthcare Needs Assessment 2012

How would you describe your household?	NW KS N=1469	%	Thomas CO N=230	%
Single	230	17.1%	38	17.7%
Married	337	25.1%	50	23.3%
Married with children at home	303	22.5%	51	23.7%
Married with children no longer at home	297	22.1%	45	20.9%
Divorced	81	6.0%	15	7.0%
Other	96	7.1%	16	7.4%
Totals	1344	100.0%	215	100.0%

### Community Healthcare Needs Assessment 2012

Regarding your health insurance coverage..	NW KS N=1469	%	Thomas CO N=230	%
Private Insurance you purchased	203	14.2%	42	18.3%
Medicare	295	20.7%	45	19.7%
Medicaid	17	1.2%	5	2.2%
Covered by Employer (employer pays total cost)	166	11.6%	23	10.0%
Covered by Employer (you & employer share cost)	597	41.9%	87	38.0%
No Coverage (Uninsured)	48	3.4%	7	3.1%
Other (please specify)	100	7.0%	20	8.7%
Totals	1426	100.0%	229	100.0%

What is your home zip code?	NW KS N=1469	%	Thomas CO N=230	%
67701 - Colby			191	32.0%
67732 - Brewster			6	1.0%
67753 - Rexford			6	1.0%
67743 - Levant			2	0.3%
67734 - Gem			1	0.2%
Others			6	1.0%
Totals			212	35.5%

## KEY - CHNA Open End Comments

Code	HC Themes	CODE	Physician Specialty
ACC	Access to Care		Primary Care:
AGE	Aging (Senior Care / Assistance)	FP	Family Practice
AIR	Air Quality	IM	Internal Medicine
ALC	Alcohol	OBG	Obstetrics/Gynecology
ALCU	Underage Drinking	PEDS	Pediatrics
ALT	Alternative Medicine		
ALZ	Alzheimers		Medicine Specialists:
AMB	Ambulance Service	ALL	Allergy/Immunology
AUD	Auditory	CARD	Cardiology
BACK	Back / Spine	DERM	Dermatology
BD	Blood Drive	ENDO	Endocrinology **
BH	Mental Health Services	GAS	Gastroenterology
BIRT	Low Birth Weight	ONC	Oncology/RADO
BRST	Breastfeeding	IFD	Infectious Diseases
CANC	Cancer	NEP	Nephrology **
CHEM	Chemotherapy	NEU	Neurology
CHIR	Chiropractor	PSY	Psychiatry
CHRON	Chronic Diseases	PUL	Pulmonary
COMM	Communication	RHE	Rheumatology
DENT	Dentists		
DIAB	Diabetes		Surgery Specialists:
DIAL	Dialysis	SUR	General Surgery
DOCS	Physicians	NEUS	Neurosurgery
DOH	Public Health Department	OPTH	Ophthalmology
DRUG	Substance Abuse (Drugs / Rx)	ORTH	Orthopedics
ECON	Economic Development	ENT	Otolaryngology (ENT)
EMRM	Emergency Room	PLAS	Plastic/Reconstructive
EMS	EMS	VAST	Thoracic/Cardiovascular/Vascular
EYE	Eye Doctor / Optometrist	URL	Urology
FAC	Facility		
FAM	Family Planning Services		Hospital Based:
FINA	Financial Aid	AES	Anesthesia/Pain
FIT	Fitness / Exercise	EMER	Emergency
FLU	Pneumonia / Flu	RAD	Radiology
FOOT	Podiatrist	PATA	Pathology
GEN	General Practitioner	NEO	Neonatal/Perinatal * ABP 06
GOV	Government	PHY	Physical Medicine/Rehab
H2O	Water Quality		
HEM	Hematologist		Ad'l Codes:
HH	Home Health	PRIM	Primary Care
HIV	HIV / AIDS	PROS	Prostate
HOSP	Hospice	REC	Recreation
HRT	Heart Care	RESP	Respiratory Disease
INSU	Uninsured/Underinsured	SMOK	Smoking
IP	Inpatient Services	SNUR	School Nurse
KID	Child Care	SPEC	Specialist Physician care
LEAD	Lead Exposure	SS	Social Services
MAMO	Mammogram	STD	Sexually Transmitted Diseases
NEG	Neglect	STFF	Medical Staff
NH	Nursing Home	STRK	Stroke
NUTR	Nutrition	SUIC	Suicide
OBES	Obesity	THY	Thyroid
OP	Outpatient Services	TOB	Tobacco Use
ORAL	Oral Surgery	TPRG	Teen Pregnancy
OTHR	Other	TRAN	Transportation
OZON	Ozone	TRAU	Trauma
PAIN	Pain Management	VACC	Vaccinations
PHAR	Pharmacy	VIO	Abuse / Violence
PNEO	Prenatal	WAIT	Wait Times
POV	Poverty	WELL	Wellness Education
PREV	Preventative Healthcare	WIC	WIC Program

## Thomas County CHNA Open Ends 2012

ID	Overall quality HC rating	CODE	Code 2	Code 3	Q3 Over the past 2 years, did you or your household receive health care services outside of your county? What for?
1079	Good	ALL			Yes immunologist
1145	Very Good	CANC			Yes cancer treatments
1177	Good	CANC			Yes Cancer treatments, Frocanter repair left leg.
1180	Good	CANC			Yes Biopsy; Mose procedure to remove carcinoma in eyebrow; repair to rotator cuff.
1096	Very Good	CARD			Yes CARDIOLOGY
1226	Very Good	CHEM			Yes My dad received chemo.
1030	Very Good	CHIR			Yes NUCCA chiropractic
1026	Good	DENT			Orthodontic services
1059	Fair	DENT	SURG		Yes Dentist, surgeon
1063	Good	DENT	ONC	ENT	Yes Dental, oncology, ENT, oral surgery, OB/GYN
1065	Good	DENT			Yes oral surgery
1066	Good	DENT			Yes Dental work, root canal in Denver, CO
1077	Good	DENT	EYE		Yes Dental implant in Denver, Cataract and lense replacement in Wichita. Other health screenings Hays
1152	Fair	DENT			Yes Dental, doctors from Denver.
1187	Good	DENT			Yes Dental
1203	Good	DENT	EYE	OPHTH	Yes Orthodontic service and ophthamologist as well as eye doctor.
1209		DENT	EYE		Yes Dental, Eye surgery
1211	Very Good	DENT	EYE		Yes Dental and eyes
1213	Very Good	DENT			Yes Dentist in Oakley-Logan Co
1215		DENT	PRIM		Yes Dentists, Primary Care
1157	Good	DENT	CHIR		Yes Dental and chiropractor
1164	Fair	DENT	EYE		Yes Dentist, Eye doctor, Specialists.
1013	Very Good	DERM	AMB		Yes Dermatologist, ambulance trip to Hays.
1058	Good	DERM	DENT	DIA	Yes Dermatology, breat care, oral surgery clinic, diabetes,
1080	Good	DERM			Yes dermatology
1083	Fair	DERM	NEUR		Yes Dermatology surgery. (MOHS) Neurology. Dermatology for my kids for acne.
1087	Very Good	DERM			Yes Skin cancer removal
1088	Very Good	DERM			Yes Dermatology - Denver referral from specialist that comes to our community hospital. Referral to specialist (surgical then radiology) for suspicious mammogram - Wichita Breast Care Specialist
1100	Very Good	DERM			Yes skin cancer clinic
1121	Very Good	DERM			Yes Dermatologist
1228	Very Good	DERM	CANC		Yes Referral to Wichita Women's Health Breast Care - Surgical and Radiological Care Referral from CMC Skin Cancer Specialist to her office in Denver
1046	Good	DIAB	CARD		Yes Diabetes Care, Cardiac Care
1166	Good	DIAB	CARD	MAMO	Yes Diabetes, cardio pulmonary, mammograms.
1127	Poor	DOCS			Yes To see doctor because of poor care you get from doctors in Colby, KS.
1052	Very Good	EMER			Yes Hip replacement - Denver
1129	Very Good	EMER			Yes ER
1138	Good	EMER			Yes Critical care
1192	Good	EMER	DENT	EYE	Yes Emergency, Dentist, Eye Care
1204	Very Good	EMER			Yes Hays Medical, Emergency Appendectomy
1227	Good	ENT			Yes Sinus Surgery
1003	Very Good	EYE			Yes retinal repair
1099	Good	EYE			Yes Eye Doctor specialist
1124	Good	EYE			Yes Specialized eye care.
1133	Very Good	EYE			Yes eye surgery
1189	Good	EYE			Yes Eye exam
1220	Fair	EYE	BACK		Yes Eye care, back care, Kidney care.
1221	Fair	EYE	ORTH		Yes Cornea transplant, orthopedist, eye care
1170	Very Good	FP			Yes Family Care Practitioner
1084	Very Good	GAS			Yes gastroenterology
1153		GAS			Yes colon resection

Thomas County CHNA Open Ends 2012						
ID	Overall quality HC rating	CODE	Code 2	Code 3	Q3 Over the past 2 years, did you or your household receive health care services outside of your county? What for?	
1223	Poor	GAS			Yes	gall bladder surgery
1027	Very Poor	HH			Yes	good home health
1007	Good	HRT			Yes	Heart cath - Denver, CO
1021	Fair	HRT			Yes	Hays, Oakley
1037	Very Good	HRT			Yes	open heart surgery
1022	Fair	MAMO			Yes	mammogram
1147	Good	MAMO			Yes	Mammogram
1195	Good	MAMO	DENT		Yes	Mammogram, breast cancer checks, dental surgery.
1045	Good	NEUR	ENDO	DENT	Yes	Neurologist, Neuro Surgeon, Endocrinologist, Dentist, Eye Doctor, D.O w/specialty in Anti-aging
1033	Good	OBG	DERM		Yes	GYN, dermatologist
1143	Poor	OBG			Yes	Delivered my son in Ellis at Hays Medical.
1173	Fair	OBG	PEDS	SUR	Yes	Specialty OB/GYN; Pediatric services; surgical services.
1201	Good	OBG			Yes	OB/GYN in Hays, Dentist in Atwood.
1004	Very Good	ONC			Yes	oncology
1082	Fair	ONC			Yes	oncology
1002	Fair	OP			Yes	Outpatient
1034	Good	ORTH			Yes	orthodontist
1039	Very Good	ORTH	EYE		Yes	Hays orthopedic, eye specialists
1060		ORTH			Yes	Knee replacement exam
1081	Very Good	ORTH			Yes	orthopedic surgery
1092	Good	ORTH			Yes	HEART CATH IN HAYS, KS
1130		ORTH	PT		Yes	Orthopedic, physical therapy
1146	Good	ORTH			Yes	Orthopedic
1190	Good	ORTH			Yes	Specialist ortho in Denver.
1205	Fair	ORTH			Yes	Orthopedic
1224	Poor	ORTH			Yes	Orthopedic surgery
1024	Good	OTHR			Yes	Decatur
1041	Very Poor	OTHR			Yes	Wichita Hospital excellent
1047	Good	OTHR			Yes	Hospital stay and E.R services
1061	Good	OTHR			Yes	Hays
1062		OTHR			Yes	Hospitalization at Oakley
1070	Very Poor	OTHR			Yes	All
1105	Fair	OTHR			Yes	Denver
1106	Poor	OTHR			Yes	I will not say as it will not provide me privacy as our community is to small.
1119	Good	OTHR			Yes	salina regional hospital
1131	Fair	OTHR			Yes	Opt. Oakley
1150	Good	OTHR			Yes	Hays Med, Hays, KS
1162	Very Good	OTHR			Yes	I LIVE IN ANOTHER COUNTY BUT I WORK WITH THOMAS COUNTY ALOT MOST OF MY CLIENTS LIVE IN THOMAS COUNTY AND SURROUNDING AREAS
1178	Good	OTHR			Yes	Hays Medical Center for bleeding ulcers.
1208	Good	OTHR			Yes	Lane and Scott Counties
1048	Good	PEDS			Yes	Child had tubes in ears
1053	Poor	PEDS	DENT	ORTH	Yes	Pediatrics, dentist, orthodontics, gynecology
1229	Good	PNEO	OBG		Yes	prenatal care and delivery in Hays
1230	Very Good	PNEO			Yes	ICU care for pre-mature newborn that was transferred out of hospital in my county.
1134	Very Good	RAD			Yes	Several x-rays, C scan
1044	Very Good	RAD	ONC	SUR	Yes	treatment (radiation, oncologist, surgery) for cancer in Denver
1040	Good	SPEC			Yes	Specialty - Denver CO
1056	Poor	SPEC			Yes	Specialist
1069	Very Good	SPEC			Yes	Specialist in Denver
1089	Good	SPEC			Yes	We went to a specialist in Denver
1114	Very Good	SPEC			Yes	referred to specialist in Denver
1123	Fair	SPEC			Yes	Various specialists
1137	Good	SPEC			Yes	VIR out of Denver, CO 80218
1140	Very Good	SPEC			Yes	Arthritis doctor is in Colorado.

Thomas County CHNA Open Ends 2012						
ID	Overall quality HC rating	CODE	Code 2	Code 3	Q3 Over the past 2 years, did you or your household receive health care services outside of your county? What for?	
1142	Good	SPEC			Yes	Specialist
1154	Good	SPEC	EYE		Yes	Atrial fibulation services at Hays Medical Center in Hays, KS with Dr Fisher very good! Eye surgery in Denver, CO with Dr Mimi Liu at Colorado Retina Assoc very poor! I will never go there again.
1168	Very Good	SPEC			Yes	Went to Denver for consults on ear problems. Taken care of.
1198	Very Good	SPEC			Yes	Specialty services referred by local physician.
1207	Fair	SPEC			Yes	Referral for specialist
1014	Fair	SUR	ORTH		Yes	Surgery, orthopedic
1023	Very Good	SUR	EMER		Yes	Surgery, consultation with specialist, emergency care.
1032	Good	SUR	SPEC		Yes	surgeries and specialty doctors
1038	Good	SUR			Yes	Surgery - hand bone removed in joint, could not do it here.
1073	Good	SUR			Yes	Surgery in Denver
1086	Good	SUR	EMER		Yes	surgery unable to be performed here, emergency service when out of town
1098	Good	SUR			Yes	sugery at PSL in Denver
1104	Good	SUR			Yes	Surgery in Hays.
1111	Good	SUR			Yes	Surgery at a large hospital in Denver.
1113	Good	SUR			Yes	Surgery in Denver
1155	Fair	SUR			Yes	Surgery in Denver.
1169	Good	SUR			Yes	Surgery on wrist.
1186	Fair	SUR			Yes	Surgery in Denver
1225	Good	SUR			Yes	surgery
1010	Good	SURG	ORTH		Yes	Both had surgery in Denver for shoulder replacement and knee replacement.
1029	Very Good	SURG	RAD	CHEM	Yes	Last August I went to Denver to get brain surgery to have a brain tumor removed. Then I went to Hays, Kansas for radiation and chemotherapy.
1074	Very Good	SURG	DENT	BH	Yes	Shoulder surgery in Hays. Wisdom teeth removed in Hays. Inpatient mental health hospitalization in Hays. Mental health outpatient in Hays.
1126	Fair	TRAU			Yes	Trauma unit, rehab, skilled nursing.
1165	Good	UROL			Yes	Urology - prostate biopsy
1035	Very Good	UROL			Yes	Specialists for urology (husband)

## Thomas County CHNA Open Ends 2012

ID	Overall quality HC rating	CODE	Code 2	Code 3	Q4 Are there healthcare services in your community / neighborhood that you feel need to be improved and / or changed? (Please be specific)
1044	Very Good	ACC	SPEC		Getting in to see some of specialists requires a long wait. I am happy that a female physician is coming to practice in Colby.
1224	Poor	ACC			Not all of the Doctors in the community are allowed to use the community hospital. My family and many others are forced to use the Oakley Ks facility. This is wrong.
1228	Very Good	ACC			We have excellent services. Very fortunate to have for a Critical Access Hospital
1048	Good	AGE			I believe Colby Care and Fairview need improvement in order to provide better care to our elderly residents.
1218	Good	AGE			WE need more options for in home care for the elderly.
1024	Good	AMB			Yes, timing of ambulance and care received.
1046	Good	AMB	EMS		Need ACLS ambulance service, staffed EMS station
1081	Very Good	AMB			ambulance services need improvement
1086	Good	AMB			better ambulance services,
1093	Good	AMB			Ambulance care
1127	Poor	BD			In order to give blood, you have to check in up front then go clea to the back of the hospital to give blood.
1018	Very Good	BH			Mental health care
1074	Very Good	BH			CMSC needs to close. Doctors and other staff are extremely poor. High Plains Mental Health is extremely poor.
1080	Good	BH			more mental health providers - very stretched
1088	Very Good	BH			Mental Health
1110	Good	BH			mental health services are in need of improvement
1129	Very Good	BH			Mental health service.
1159	Good	BH			Mental health services and discord in community between physicians and hospital.
1181	Good	BH			High Plains Mental Health, counselor told my husband that larned did not diagnose him right.
1091	Very Good	CANC	SURG		Better Cancer treatment services - so don't have to go out of town. Need a surgeon on site.
1015	Good	CHIR			6 chiropractors in a town of 5,000 people, this is ridiculous. Not well-educated chiropractors at that.
1079	Good	COMM			local hospital working with local physicans
1106	Poor	COMM			Yes the resources used to provide a referral station seem rather large.
1123	Fair	COMM			The issue between CMC and Dr Hildyard needs to be resolved. His dedication to his patients is amazing and he (and his patients) need the support of the local hospital.
1158	Good	COMM			Both clinics work together.
1177	Good	COMM			Doctors and hospital need to work together, not fight.
1207	Fair	COMM			Attitude toward some doctors.
1032	Good	DENT	WELL		More dentists! Promoting healing in the community from all of the medical happenings (this is a major issue still).
1045	Good	DENT	EYE	SPEC	Our Dentist & Eye Doctors do not take our insurance. I feel that we need to have a few more specialists in other specialties & our dentists and eye doctors should take more insurances.
1121	Very Good	DENT	DERM		More timely appointments with a dentist. Some specialties, i.e., dermatology, not available locally.
1136	Good	DENT	INSU		There needs to be a dental clinic that accepts Medicaid.
1165	Good	DENT	HH		Need more dental providers. Need home health services.
1217	Very Good	DENT			1 more dentist would be good, it seems like people are always on a waiting list.
1099	Good	DERM			Need a local dermatologist
1021	Fair	DIAL			Needs a dialysis center. The closest one is Hays or Graden City.
1087	Very Good	DIAL			Dialysis service is needed locally
1144	Very Good	DIAL			Dialysis
1047	Good	DOCS			My county needs more physicians.
1052	Very Good	DOCS			Need more doctors.



## Thomas County CHNA Open Ends 2012

1089	Good	DOCS			I think the doctors need to work on compassion. They need to remember that they are not better than others because they are doctors. They need to work at not making people feel that their problem is insignificant. They are all good physicians, but just because they don't think something is a big deal doesn't mean the patient doesn't.
1115	Good	DOCS			TO SEE MY DOCTOR, I WILL GO TO THE OAKLEY HOSPITAL UNLESS I'M PICKED UP BY AN AMBULANCE AND HAVE NO CHOICE. I THINK CMC IS VERY GOOD, BUT SO IS MY DOCTOR
1118	Good	DOCS			more physicians
1166	Good	DOCS			PA's need more/better training.
1223	Poor	DOCS			Most of the Docs in Colby have no clue!!! That's why our family goes to Hays!!!
1105	Fair	EMRM			ER needs to improve
1188	Good	EMRM			Emergency room care
1003	Very Good	EMS			EMS in Brewster
1176	Very Good	EMS			EMS
1077	Good	ENDO	DERM	CANC	We need an endocrinologist for thyroid disease. We need specialists for skin and dermatology. We need better cancer treatment facilities for chemo, port flushing and overall professional proficiency in this area. We need to be a regional center not a place to be stabilized and sent somewhere else.
1092	Good	ENDO	COMM		WE NEED AN ENDOCRINOLOGIST IN THE CONSULTING CLINIC. WE NEED MORE SUPPORT FROM THE OLDER GENERATION FOR OUR HOSPITAL AND THE MEDICAL NEEDS OF OUR ENTIRE COMMUNITY. THE OLDER GENERATION NEED TO REALIZE THAT THERE ARE MORE THAN JUST ONE DOCTOR IN THE COMMUNITY AND THAT ONE DOCTOR HAS BEEN PROVEN TO NOT ALWAYS DO THE BEST FOR HIS PATIENTS. WE NEED THE BETTER TRAINED DOCTORS IN THIS COMMUNITY.
1145	Very Good	EYE	ACC		Eye doctor open late one evening a week. Weekend medical clinic.
1041	Very Poor	FAC			Hospital
1070	Very Poor	FAC			Hospital is a joke.
1124	Good	FAC			Hospital needs to use all MD's in community.
1126	Fair	FAC			Hospital needs to have Dr Hildyard.
1192	Good	FAC			Hospital - listen to patient's concerns and be flexible. I delivered our last child at home because the hospital was not flexible.
1221	Fair	FAC			Hospital is small. Do not trust the services.
1113	Good	FINA			Hospital rates are very expensive as well as use for Speciality doctors at the hospital.
1063	Good	FINA	DENT		Cost of care has much to do with seeking care elsewhere for dental.
1173	Fair	FP	OBG		Yes, need improved family physician/OB care only one doctor in town. We just have had bad experiences with the other 3.
1008	Very Good	HH	DIAB	FIT	Increase services by home health department. Increase diabetic appointments in clinic. Increase weight loss programs.
1023	Very Good	HH	AGE	KID	Home healthcare for elderly, more quality daycare providers.
1026	Good	HH			I think it would be beneficial to have another home health agency
1213	Very Good	HH			More home health services.
1101	Good	OBG			Women's Healthcare services could use improvement.
1084	Very Good	ORTH			would like to see orthopaedic surgery continue when dr Saba retires
1002	Fair	OTHR			Too much airflighting for minor problems
1100	Very Good	OTHR			I THINK COLBY HAS GOOD HEALTHCARE FOR THE MEMBERS OF THIS COMMUNITY
1143	Poor	OTHR			Colby Hospital!
1154	Good	OTHR			I cannot think of any right now.
1167	Good	OTHR			For Citizens Medical Center to close down.
1186	Fair	OTHR			Include Vic Hildyard at CMC.
1198	Very Good	OTHR			Believe we are strong healthcare community. One of our greatest assets.
1053	Poor	PEDS			Pediatrics - NEED a pediatrician!
1185	Very Good	PEDS			Children's doctor.

## Thomas County CHNA Open Ends 2012

1057	Good	PREV	DRUG		Intervention and education to prevent drug abuse with school-age children and young adults.
1205	Fair	PRIM			Primary physician in Colby, able to work at local hospital.
1022	Fair	RAD			Radiology needs to be read on-site.
1112	Fair	SNUR			School Nurse...but understand due to lack of funding
1078	Good	SPEC			More specialty physicians needed in the community due to disparities of patients ability to reach out of area for care.
1142	Good	SPEC			More options for provider.
1151	Poor	SPEC			Specialists, local health politics are outrageous.
1152	Fair	SPEC			Need better specialized care.
1230	Very Good	SPEC			I think that there is very good services provided to our community. There is always a growing need for more specialists, although more and more are beginning to travel to our community.
1027	Very Poor	STFF			More personnel, too much work and not enough help.
1055	Poor	STFF			Dr Hillyard needs his own hospital. Hospital personnel are rude and need improved.
1139	Fair	STFF			Hospital care needs improvement.
1220	Fair	STFF			All of it needs to be more professional. The help needs know more.
1011	Good	WAIT			Not having to wait for a long period of time to see the physician.
1083	Fair	WAIT	EMRM		Yes. the wait time in the ER is ridiculous. My family hopes to never have a REAL emergency becuase it takes so long for the doc on call to arrive. Our hospital could be MUCH cleaner. The rings in the toilet in inpatient rooms are nasty. Beds in the hallways! That cant be sanitary.
1025	Very Good	WELL			Asthma Education courses offered through the hospital or health department would be a huge benefit to the county.

CHNA report  
questions contact :



***Vince Vandelaar, MBA***  
***VVV Marketing & Development INC.***  
***Adjunct Professor / Professional Consulting  
Services***

***601 N Mahaffie, Olathe, KS 66061***  
***(913) 302-7264 (C)***  
***vmlvandelaar@aol.com***  
***LinkedIn: vandelaar***  
***[http://sites.google.com/site/vvvresearchdevelo  
pment/](http://sites.google.com/site/vvvresearchdevelopment/)***